

**2022 COACHELLA INTERNATIONAL EXHIBITION OF PHOTOGRAPHY
JOSHUA TREE JUDGING**



**2022 Coachella International Exhibition of Photography
OUR 15TH YEAR!**

JOSHUA TREE JUDGING

PID COLOR GALLERY

Sponsored by the Coachella Valley Desert Camera Club

Recognized by the Photographic Society of America

IMPORTANT NOTE

**Use bookmarks on left and up/down arrow keys
to navigate through the Catalog**

WEBSITE

<https://www.coachella-ex.org/>

COPYRIGHT

All copyrights in all posted images accessible through this catalog remain vested with the original authors (makers) of these images. All use, copying, or republishing of any image without permission of the author is prohibited except for downloading these images directly from this document or website for purposes of viewing.

**2022 COACHELLA INTERNATIONAL EXHIBITION OF PHOTOGRAPHY
JOSHUA TREE JUDGING**



PID Color Gallery

JOSHUA TREE JUDGING

EXHIBITION COMMITTEE

General Chair: Stuart Lynn, HonPSA, QPSA, HonS4C, DFS4C

Vice Chair: Jeanne Scott, AS4C

Intake Coordinator: Gary Vandemark, AS4C

JUDGES

MANOLIS METZAKIS, APSA, QPSA, EFIAP/P, ESFIAP, GPU ZEUS, GPU CR5

NANCY SPEAKER, APSA, PPSA

ANNE SUTCLIFFE, APSA, PPSA, EFIAP

IMPORTANT NOTE

**Download and save to local computer or mobile device
and open with Acrobat.**

**Use bookmarks on left and up/down arrow keys
to navigate through the Catalog.**

COPYRIGHT

All copyrights in all posted images accessible through this catalog remain vested with the original authors (makers) of these images. All use, copying, or republishing of any image without permission of the author is prohibited except for downloading these images directly from this document or website for purposes of viewing.

2022 COACHELLA INTERNATIONAL EXHIBITION OF PHOTOGRAPHY JOSHUA TREE JUDGING



2022 Coachella International Recognized by the Photographic Society of America

The sponsors of this International Exhibition of Photography have been awarded Recognition by PSA, the world's largest patron of international photographic exhibitions. PSA, although it has provided Recognition, is neither a sponsor nor directly involved in the operation of this exhibition.

Valid acceptances received by PSA Members in recognized sections of this exhibition are eligible for PSA Star Ratings, listing in the world-wide PSA Who's Who of Photography and credited towards the PSA Distinctions of QPSA, PPSA, EPSA, MPSA, MPSA2, GMPSA, GMPSA/B, GMPSA/S, GMPSA/G, and GMPSA/P.

PSA is a non-profit organization promoting the advancement of photography in all its forms to novice, amateur and professional photographers world wide.

For information on membership and the many services and activities of PSA contact:

psa
PHOTOGRAPHIC SOCIETY OF AMERICA
8241 S. Walker Avenue, Suite 104
Oklahoma City, OK 73139-9401, U.S.A.
E-mail: hq@psa-photo.org
Web Site: <http://www.psa-photo.org>

2022 COACHELLA INTERNATIONAL EXHIBITION OF PHOTOGRAPHY JOSHUA TREE JUDGING

General Chair: Stuart Lynn, HonPSA, QPSA, HonS4C, DFS4C
Vice Chair: Jeanne Scott, AS4C



JUDGES

MANOLIS METZAKIS, APSA, QPSA, EFIAP/P, ESFIAP, GPU ZEUS, GPU CR5
NANCY SPEAKER, APSA, PPSA
ANNE SUTCLIFFE, APSA, PPSA, EFIAP

Image No.

SECTION 1 - PID COLOR: GENERAL

PSA BEST OF SHOW GOLD	
NAN CARDER (USA): "KIT FOX 7737"	24
CVDCC GOLD	
TERRY MIRANDA (USA): "VINTAGE LUGGAGE"	170
CVDCC SILVER	
HEIDI GAUTHREAUX (USA): "CARVING THE WAVE"	89
CVDCC SILVER	
MICHAEL S MARTIN (AUSTRALIA): "BOAB SUNRISE"	166
CVDCC BRONZE	
BARBARA BURKE (USA): "WHITE IRIS"	22
CVDCC BRONZE	
AVIK SETT (INDIA): "FLOWER GIRL"	227
CVDCC BRONZE	
CRAIG TOMS (USA): "OBLIVIOUS"	253
JUDGE'S CHOICE	
SHERMAN CHEANG (MACAU): "MORNING SAILING"	32
JUDGE'S CHOICE	
ROBERT DAVIS (USA): "BUTTERFLY EYE AND PROBOSCIS"	50
JUDGE'S CHOICE	
ANGELA POGGIONI (USA): "CHILD OF THE FOREST"	187

SECTION 2 - PID COLOR: WATER

PSA BEST OF SHOW GOLD	
JULIAN JOLLIFFE (USA): "CONVERGENCE"	136
CVDCC GOLD	
IAN ENGLISH (AUSTRALIA): "TONGUE IN CHEEK"	78
CVDCC SILVER	
VICKI MORITZ (AUSTRALIA): "TOWN BEACH MORNING WAVE"	172
CVDCC SILVER	
MICHAEL REYBURN (USA): "THE EYE OF THE BOAT"	194
CVDCC BRONZE	
STEVEN FRIEDMAN (USA): "CURL 2"	86
CVDCC BRONZE	
JULIAN JOLLIFFE (USA): "FIRE IN THE HOLE"	137
CVDCC BRONZE	
WILLIAM LARUE (USA): "FROST & WATER DROPS"	154
JUDGE'S CHOICE	
DONALD DEDONATO (USA): "AUTUMN LITTLE PIGEON RIVER"	57
JUDGE'S CHOICE	
BARBARA KUEBLER (USA): "EVERGLADES CORN FIELD"	150
JUDGE'S CHOICE	
NEVILLE THOROGOOD (AUSTRALIA): "OVER THE FALLS"	251

2022 COACHELLA INTERNATIONAL EXHIBITION OF PHOTOGRAPHY

JOSHUA TREE JUDGING



PID COLOR ACCEPTANCES INDEX

PCG = PID COLOR GENERAL : PCT = PID COLOR THEME

	Image No		Image No
BENSON, BOB, FPSA, EPSA (USA)			
PCG "FALLLS AT SPRING VALLEY" .	13	PCT "FLOATING ICE" .	14
PCG "TOMATO HORM WORM W WASP PARASITES" .	15		
BENSON, PEGGY, PPSA (USA)			
PCG "SQUARE OF MIRACLES" .	16		
BHATTACHARYA, SUBHRA (USA)			
PCT "LIQUID SCULPTURE 2" .	17		
BRASSIL, TOM (AUSTRALIA)			
PCG "BOULDER PLANT" .	18	PCG "LOFOTEN LINES" .	19
BURKE, BARBARA (USA)			
PCG "FLOATING PLUMERIA" .	20	PCT "REBOUND RAINBOW" .	21
PCG "WHITE IRIS" CVDCC Bronze.	22		
CARDER, NAN, FPSA, GMPSA (USA)			
PCG "DOTD 5498" HM.	23	PCG "KIT FOX 7737" PSA Best of Show Gold.	24
PCG "OATMAN 0942" .	25		
CATANIA, GOTTFRIED, PPSA (MALTA)			
PCG "CITY OF ARTS AND SCIENCES 17" .	26	PCG "CITY OF ARTS AND SCIENCES 6" HM.	27
PCG "SEAMSTRESS" .	28		
CHAN, ANNA (USA)			
PCG "FALL IN LOVE" .	29		
CHEANG, SHERMAN (MACAU)			
PCT "FEEDING MY BABY" .	30	PCG "HAPPY CHILD" HM.	31
PCG "MORNING SAILING" Judge's Choice.	32	PCG "MY FOREHAND ATTACK" .	33
PCG "WE LIKE DANCING" .	34	PCT "WORKING IN THE MORNING" .	35
CHEUK, SHU, GMPSA/S (USA)			
PCG "BALLET ON FLOOR" HM.	36	PCG "HALEIGH LEAPING" .	37
CHIU, BOB, GMPSA, GPSA (USA)			
PCT "BLANKET OF SNOW42" .	38	PCT "EXPLORE YELLOWSTONE45" .	39
CHOI, CHI KUN, PPSA (HONG KONG)			
PCG "BEST MOMENT" .	40	PCT "CONVERGE TO SEA" .	41
PCG "ENJOYING WITH MY STAGE" .	42	PCT "STRENGTH OF WATER" .	43
CHRISTMAN, ROBERT (USA)			
PCG "EVIL TWINS" .	44	PCG "GALLUP POW WOW 3" .	45
CLORAN, RICHARD, HONPSA, GMPSA (USA)			
PCG "IBIS IN LATE LIGHT" .	46		
DAVIS, BRIAN, MPSA (ENGLAND)			
PCG "FROSTED TREE AND HOT WATER" .	47	PCT "JOKULSARLON GLACIAL LAGOON" .	48
PCG "LISTENING TO THE PAST" .	49		

(may be continued on next page)

2022 COACHELLA INTERNATIONAL EXHIBITION OF PHOTOGRAPHY

JOSHUA TREE JUDGING



PID COLOR ACCEPTANCES INDEX

PCG = PID COLOR GENERAL : PCT = PID COLOR THEME



	Image No		Image No
DAVIS, ROBERT, MPSA (USA)			
PCG "BUTTERFLY EYE AND PROBOSCIS" Judge's Choice.			
DAVIS, SHIRLEY, EPSA (ENGLAND)			
PCT "ICEBERG REFLECTIONS" .	51		
DE SILVA, NILMINI, QPSA, BPSA (AUSTRALIA)			
PCT "A MOMENT IN TIME" .	52	PCG "CHALK ARTIST" .	53
PCT "MELTING ICE" .	54	PCT "QUITE THE SPLASH" .	55
DEDONATO, DONALD, GMPA (USA)			
PCG "ATTRACTIVE KESTREL" .	56	PCT "AUTUMN LITTLE PIGEON RIVER" Judge's Choice.	57
PCG "ELEGANT BALD EAGLE" .	58	PCG "IMPRESSIVE WINGSPAN DISPLAY" .	59
PCT "WHITEWATER FALLS" .	60		
DELANY, KATHRYN (CANADA)			
PCG "DUET" .	61		
DELANY, NICK (CANADA)			
PCG "I'M NOT SHARING" .	62		
DEMETER, JANOS, EPSA (HUNGARY)			
PCG "DEVOTION" .	63	PCG "LET YOURSELF OUT" .	64
PCT "TRAFFIC JAM" .	65		
DOERRIE, JENNIFER (USA)			
PCG "YOSEMITE CHAPEL - WINTER 2019" .	66		
DUONG, MINH (USA)			
PCG "THE STAR" .	67		
ENGLAND, RITA (AUSTRALIA)			
PCG "HOME IN THE SAND" .	68	PCG "LOOK OUT" .	69
PCT "POOL AREA CLOSED" .	70	PCG "PURPLE BRIDGE" .	71
PCT "WASHING OVER THE POOL" .	72		
ENGLISH, DIANNE, PPSA (AUSTRALIA)			
PCG "A BIT OF WITCHERY" .	73	PCG "FLYING HIGH" .	74
ENGLISH, IAN, MPSA, BPSA (AUSTRALIA)			
PCT "A FOOT" .	75	PCG "LAKE NUGGA NUGGA SUNRISE QLD" .	76
PCT "SURFING THE HARBOUR ENTRANCE" .	77	PCT "TONGUE IN CHEEK" CVDCC Gold.	78
FARLOW, CHARLOTTE, PPSA (USA)			
PCG "CLUSTER OF ORCHIDS" .	79		
FIELDS, ROBERT (USA)			
PCT "MISTY FALLS" .	80	PCT "TROPICAL PALMS" .	81
FISCHER, JIE (USA)			
PCG "THE FROZEN WORLD17" .	82		
FLEURY, GERALD, QPSA, BPSA (USA)			
PCT "BIG SPLASH" .	83	PCT "SWIRL" .	84

(may be continued on next page)

2022 COACHELLA INTERNATIONAL EXHIBITION OF PHOTOGRAPHY

JOSHUA TREE JUDGING



PID COLOR ACCEPTANCES INDEX

PCG = PID COLOR GENERAL : PCT = PID COLOR THEME



	Image No		Image No
FOERSTER, HELMUT, EPSA (GERMANY)			
PCG "SURFERS PARADISE 7" .	85		
FRIEDMAN, STEVEN (USA)			
PCG "CURL 2" CVDDC Bronze.	86	PCG "MOONSET SHADOWS" .	87
GALLAGHER, JAMES (USA)			
PCG "SPLIT WATERFALL AT GLADE CREEK" .	88		
GAUTHREAUX, HEIDI (USA)			
PCG "CARVING THE WAVE" CVDDC Silver.	89	PCT "JOIRNEY OF WATER" .	90
PCG "SIMPLICITY" .	91	PCT "THOR'S WELL" HM.	92
GAUTHREAUX, RICK (USA)			
PCG ""DAWN BREAKS ON THE PAST"" .	93	PCT ""IN THE BUBBLE"" HM.	94
PCT ""SILVER AND GOLD"" .	95	PCT ""WINDANSEA"" .	96
GIUDICE, MONICA, PPSA (ITALY)			
PCG "AIRPORT33" .	97	PCT "GLACIER11" .	98
PCT "HOUSES AND THE SEA" .	99		
GRAY, LEAH, PPSA, BPSA (CANADA)			
PCG "FOUR" .	100		
GUERRA CLARK, ISABEL, PPSA (USA)			
PCG "FLOWER AND HUMMER" .	101	PCG "MILKY WAY AT SHIPROCK" .	102
PCG "THE DISPUTE" .	103	PCG "THE QUETZAL" .	104
GURNETT, CRAIG (AUSTRALIA)			
PCG "CURVED HILLSIDE" .	105	PCT "DOWN OVER THE PIER" .	106
HABRINGER, WOLFGANG (AUSTRIA)			
PCG "ANAPASUS 90" HM.	107	PCG "HONGKONG 69" .	108
PCG "METEORA 05" .	109	PCG "SOLITUDE 33" .	110
HADFIELD, CHRISTINE (ENGLAND)			
PCG "BATELURE" .	111	PCG "HARVEST MOUSE DEXTERITY" HM.	112
PCG "HIPPOS" .	113	PCG "VERVETS PLAYING" .	114
HALVAS-NIELSEN, HERDIS, GMPSA (GERMANY)			
PCT "GULLFOSS WITH RAINBOW" .	115		
HANISCH, RALF, MPSA (GERMANY)			
PCG "RINGDURCHBLICK" .	116		
HANSELL, SUSAN, PPSA (AUSTRALIA)			
PCT "WELCOME TO DARWIN" HM.	117		
HERMANSEN, MOGENS (USA)			
PCT "A HARD DAYS WORK" .	118	PCG "RARE AND CLEAR EVENING IN SHANGHAI" .	119
HOCHHAUS, ALEXANDER (GERMANY)			
PCG "AMPHITRITE" .	120	PCG "CLOUDED" .	121
PCG "LADY WITH DOG" .	122		

(may be continued on next page)

2022 COACHELLA INTERNATIONAL EXHIBITION OF PHOTOGRAPHY

JOSHUA TREE JUDGING



PID COLOR ACCEPTANCES INDEX

PCG = PID COLOR GENERAL : PCT = PID COLOR THEME

	Image No		Image No
HORSNELL, JENNI, GMPA/G (AUSTRALIA)			
PCG "DEWY DAMSELFLY 56" .	123	PCG "DEWY SKIPPER 7" .	124
PCG "THREE ROSES IN VASE" HM.	125		
HSIONG, YOUMANS, EPSA (USA)			
PCG "HAPPIEST DAY" .	126	PCG "REFLECTION CANYON 2022" .	127
HUGHES, SHELLEY (USA)			
PCT "IN AND OUT OF THE BARREL" HM.	128	PCT "WATER" .	129
HUTCHISON, GEORGE, QPSA (USA)			
PCG "AEROBATIC LOOP" .	130	PCG "AGAVE 002" .	131
PCT "DESCHUTES RIVER" .	132	PCT "LAST LIGHT FLIGHT" .	133
PCT "THE CHASE" HM.	134		
JOLLIFFE, JULIAN (USA)			
PCG "AN EVENING ON THE MORRO DUNES" .	135	PCT "CONVERGENCE" PSA Best of Show Gold.	136
PCT "FIRE IN THE HOLE" CVDCC Bronze.	137	PCG "LATE NIGHT IN A MOONLIT VALLEY" .	138
PCG "RED LINE TO HOLLYWOOD" .	139	PCT "SUNSET AT THE POTHOLES" .	140
KATSAMPES, ANDREW (USA)			
PCG "MYOPIA_2021(1572)" .	141		
KING, FRANCIS, GMPA/B (CANADA)			
PCT "CASTING NET BY UBAN BRIDGE 103" HM.	142	PCG "DANCING 101" .	143
KLEINDIENST, VALERIE (AUSTRALIA)			
PCT "CATCHING AN EEL" .	144	PCG "GREY CLOUD OVER STORY BRIDGE" .	145
KORPELA, ANTTI, PPSA (FINLAND)			
PCT "SEEDS" .	146	PCG "STROKES" .	147
PCT "WAVE IS COMING" HM.	148		
KUEBLER, BARBARA, FPSA, MPSA (USA)			
PCG "DANCING CATTLE EGRET" .	149	PCT "EVERGLADES CORN FIELD" Judge's Choice.	150
LARUE, WILLIAM (USA)			
PCG "ACRON & LEAF STILL LIFE" .	151	PCG "BLOWING FALL LEAVES" .	152
PCT "FROST & ICE" HM.	153	PCT "FROST & WATER DROPS" CVDCC Bronze.	154
PCG "OLD MR WINTER" HM.	155	PCG "RUSTY GARDEN BIKE" HM.	156
LEONARD, KAREN, PPSA (USA)			
PCG "WIN OVER HUSKIES" .	157		
LONG, FENGYING, GMPA, BPSA (CHINA)			
PCG "STRAY BIRDS5" .	158		
LOPEZ, RAUL, QPSA (USA)			
PCT "THE CRASHING WAVES" HM.	159	PCT "THE VIRGIN RIVER AT ZION" .	160
LUSTIG, STEPHEN (CANADA)			
PCG "BEHIND OPEN DOORS" .	161	PCG "BROKEN DREAMS" .	162

(may be continued on next page)

2022 COACHELLA INTERNATIONAL EXHIBITION OF PHOTOGRAPHY

JOSHUA TREE JUDGING



PID COLOR ACCEPTANCES INDEX

PCG = PID COLOR GENERAL : PCT = PID COLOR THEME

	Image No		Image No
MAIRESSE, LUC, MPSA, SPSA (BELGIUM)			
PCG "GOLDEN HOURS" .	163	PCT "WATER PARADISE" HM.	164
PCG "WHEELERS" .	165		
MARTIN, MICHAEL S (AUSTRALIA)			
PCG "BOAB SUNRISE" CVDCC Silver.	166	PCG "OUT OF THE DEEP END" HM.	167
MIRANDA, TERRY (USA)			
PCG "CAT ON A STOOL" .	168	PCG "TAKE ME WITH YOU" .	169
PCG "VINTAGE LUGGAGE" CVDCC Gold.	170		
MORITZ, VICKI, GMPSA/B (AUSTRALIA)			
PCT "TOWN BEACH MORNING SURF" .	171	PCT "TOWN BEACH MORNING WAVE" CVDCC Silver.	172
MUSINSKY, AMY (USA)			
PCG "WHITE FACE WOODPECKER" .	173		
NEWMAN, KATHRYN (USA)			
PCT "MULTNOMAH FALLS LONG EXP" .	174		
NG, CHI FUN FANNY (HONG KONG)			
PCG "DANCE WITH COLOUR" HM.	175	PCG "LITTLE NAUGHTY" .	176
NGUYEN, TRUNG CANG (AUSTRALIA)			
PCG "FEEDING" .	177	PCG "FIRST PRIORITY WAVE" .	178
O'BRIEN, PETER JOHN (AUSTRALIA)			
PCG "CONCENTRATING ON BALANCE" .	179	PCG "VICTORY WHEELIE" .	180
PAIK, YOUNG, APSA (USA)			
PCG "ENCHANTED FLOWER" .	181	PCG "WATER LILY" HM.	182
PARKER, CRAIG, MPSA, BPSA (AUSTRALIA)			
PCG "AFRICAN WILD DOG TUG OF WAR" .	183	PCT "SURFING 06" .	184
PCG "WEAVING UPSIDE DOWN" .	185		
PASSUELLO, ELIZABETH, EPSA (NEW ZEALAND)			
PCG "UP AND DOWN" .	186		
POGGIONI, ANGELA, EPSA (USA)			
PCG "CHILD OF THE FOREST" Judge's Choice.	187	PCG "LIONS QUENCHING THEIR THIRST" .	188
PONTI-SGARGI, JUDITH (CANADA)			
PCG "PIONEER LADY" .	189	PCG "TANGERINES" .	190
PRISLIPSKY, SHARON, APSA, PPSA (USA)			
PCT "BE SILL MY SOUL" .	191	PCG "FULL MOON OVER SUNFLOWERS" .	192
REYBURN, MICHAEL (USA)			
PCT "BURNEY FALLS" .	193	PCT "THE EYE OF THE BOAT" CVDCC Silver.	194
RILEY, ELIZABETH (AUSTRALIA)			
PCG "CURVES ON LAKE ARGYLE" .	195	PCT "LOW TIDE MEANDER" .	196
PCT "SEA STRAND" .	197		

(may be continued on next page)

2022 COACHELLA INTERNATIONAL EXHIBITION OF PHOTOGRAPHY

JOSHUA TREE JUDGING



PID COLOR ACCEPTANCES INDEX

PCG = PID COLOR GENERAL : PCT = PID COLOR THEME

	Image No		Image No
RILEY, MARTIN (AUSTRALIA)			
PCT "DIP FALLS" .	198	PCG "THE COPPER TREE" HM.	199
PCT "THE TURQUOISE WAVE" .	200	PCG "TIDAL CREATIONS" .	201
PCG "TUK TUK SHELTER" .	202		
ROBERTS, LILLIAN, EPSA (USA)			
PCT "COWBOY N HORSE GETTING WET" .	203	PCG "W DIAMONDBACK WHIP TONGUE" .	204
ROSENGREN, ERIK, FPSA, PPSA (USA)			
PCG "MONUMENT VALLEY SUNRISE" HM.	205		
ROUPAS, PETER (AUSTRALIA)			
PCT "BREWING STORM" .	206	PCT "SWEEPING ROCK SHELF" .	207
RYU, SHIN WOO, EPSA (SOUTH KOREA)			
PCG "HOMING2" .	208	PCT "RAFTING2" .	209
PCG "SUNSET 02" .	210		
SAMOYALT, GUY B., APSA, GMPSA (FRANCE)			
PCG "LAGUNA COLORADA" .	211		
SANCANDI, IVANA (ITALY)			
PCG "THE BRIDGE" .	212	PCG "TIME OF PRAYER" .	213
SCHNELZER, J.R., FPSA, MPSA2 (USA)			
PCT "FISHING TRAPS" .	214	PCG "SMOKEY JOE" .	215
SCHNELZER, LISA, PPSA (USA)			
PCT "BEACH WALK" .	216	PCG "SADHU OF VARANASI" .	217
PCG "SKULL AND SAND" .	218		
SCHWEDEN, WOLFGANG, GMPSA/G (GERMANY)			
PCG "CARE 1" .	219		
SCIFRES, PETER, GPSA (USA)			
PCT "ARCHANGLE FALLS 2" .	220	PCG "CATHEDRAL PEAK" .	221
PCG "MESA ARCH 2" .	222		
SEIBLY, DEBORAH (USA)			
PCG "DANCE PARTNERS" .	223	PCG "SUMMER AFTERNOON" .	224
SETT, AVIK, EPSA (INDIA)			
PCG "BEHIND THE TRUTH 1" HM.	225	PCG "DRISTI 3542" .	226
PCG "FLOWER GIRL" CVDCC Bronze.	227	PCG "IPSITA 55" HM.	228
SHACKELFORD, SCOTT (USA)			
PCT "PLASTIC BUBBLE FUN" .	229		
SHE, JIAHU (CHINA)			
PCT "BETWEEN WATERCLOUDS" .	230	PCG "CHASE THE MOON" .	231
PCG "RIDE ON THE BEAUTY BACK GRASSLAND" .	232		
SINHA, BARUN (INDIA)			
PCG "SAREE SHOPPING 0186" .	233		

(may be continued on next page)

2022 COACHELLA INTERNATIONAL EXHIBITION OF PHOTOGRAPHY

JOSHUA TREE JUDGING



PID COLOR ACCEPTANCES INDEX

PCG = PID COLOR GENERAL : PCT = PID COLOR THEME



	Image No		Image No
SMITH, GRAHAME (AUSTRALIA)			
PCG "A BOY AND HIS DOG" HM.	234	PCG "MADEMOISELLE CARA" .	235
PCG "MOLLY ON COUCH" .	236	PCG "THE BOOKWORM" .	237
SOKOLSKAYA, VALENTINA, APSA, EPSA (USA)			
PCT "SMALL CASKADE" .	238	PCT "SPIDER GEOMETRY" .	239
SOKOLSKY, OLEG, PPSA (USA)			
PCT "CREEK DISTORTIONS" .	240	PCG "MURMURATION II" .	241
SPEAKER, PAUL, PPSA (USA)			
PCT "CAYUCOS PIER GULL AND SURF-01" .	242		
STEEGH, GLENYS (NEW ZEALAND)			
PCT "COAL CREEK FALLS" .	243	PCT "THE CLASH" .	244
STRICKER, CHARLES, EPSA (USA)			
PCG "BUCKING BULL OVER COWBOY 0903" .	245		
STROBAUGH, RICK (USA)			
PCT "WAVES ALONG THE SHORE" .	246		
TANKE, DIAHANN (USA)			
PCG "SCALE AND ROSES" .	247		
THOROGOOD, NEVILLE (AUSTRALIA)			
PCT "HEAD IN THE CLOUDS" .	248	PCG "NUMBER ONE" .	249
PCG "ON THE TWINE" .	250	PCT "OVER THE FALLS" Judge's Choice.	251
PCG "WALKING IN THE RAIN" .	252		
TOMS, CRAIG (USA)			
PCG "OBLIVIOUS" CVDCC Bronze.	253	PCG "PARTLY CLOUDY" .	254
VENNING, JEFFREY, EPSA (AUSTRALIA)			
PCT "COLLISION COURSE" .	255		
WANG, YICHI (CHINA)			
PCG "NO RESISTANCE IN THE WIND AND SNOW" HM.	256		
WAT, JAMES (USA)			
PCG "CHINGMA BRIDGE TO AIRPORT HKG" .	257		
WAY, ALICE MARIE (USA)			
PCT "OREGON WAVES OF GOLD" .	258	PCG "SWAN FLOWER WITH HOOD" .	259
WEAVER, KEN, MPSA (USA)			
PCT "MAGIA BLANCA FALLS" .	260		
WHITE, JAMES M. (USA)			
PCG "ENERGETIC WIND" .	261		
WHITE, LARRY (USA)			
PCT "CALIFORNIA WAVE" .	262	PCT "VENTURA WAVE" HM.	263
WILKINS, DAVID (USA)			
PCG "DEVIL'S POSTPILE AT NIGHT" .	264		

(may be continued on next page)

2022 COACHELLA INTERNATIONAL EXHIBITION OF PHOTOGRAPHY JOSHUA TREE JUDGING



PID COLOR ACCEPTANCES INDEX

PCG = PID COLOR GENERAL : PCT = PID COLOR THEME



	Image No		Image No
<hr/>			
WILLEMS, RON (NEW ZEALAND)			
PCG "AWAITING MOONRISE" .	265	PCG "DUST STORM VICTIM" .	266
WONG, WAI YEE BENNY (HONG KONG)			
PCT "SAILING" .	267		
YE, DANLEI, GMPA/B, GPSA (CANADA)			
PCG "CUBA STREET25" HM.	268		

(may be continued on next page)

**2022 COACHELLA INTERNATIONAL EXHIBITION OF PHOTOGRAPHY
JOSHUA TREE JUDGING**



"FALLLS AT SPRING VALLEY"

BOB BENSON, FPSA, EPSA (USA)

PID Color Water

Image No: 13



“FLOATING ICE”

BOB BENSON, FPSA, EPSA (USA)

PID Color Water

Image No: 14



“TOMATO HORN WORM W WASP PARASITES”

BOB BENSON, FPSA, EPSA (USA)

PID Color General

Image No: 15

**2022 COACHELLA INTERNATIONAL EXHIBITION OF PHOTOGRAPHY
JOSHUA TREE JUDGING**



"SQUARE OF MIRACLES"

PEGGY BENSON, PPSA (USA)

PID Color General

Image No: 16



“LIQUID SCULPTURE 2”

SUBHRA BHATTACHARYA (USA)

PID Color Water

Image No: 17

**2022 COACHELLA INTERNATIONAL EXHIBITION OF PHOTOGRAPHY
JOSHUA TREE JUDGING**



“BOULDER PLANT”

TOM BRASSIL (AUSTRALIA)

PID Color General

Image No: 18

**2022 COACHELLA INTERNATIONAL EXHIBITION OF PHOTOGRAPHY
JOSHUA TREE JUDGING**



"LOFOTEN LINES"

TOM BRASSIL (AUSTRALIA)

PID Color General

Image No: 19



“FLOATING PLUMERIA”

BARBARA BURKE (USA)

PID Color General

Image No: 20

2022 COACHELLA INTERNATIONAL EXHIBITION OF PHOTOGRAPHY
JOSHUA TREE JUDGING



“REBOUND RAINBOW”

BARBARA BURKE (USA)

PID Color Water

Image No: 21

2022 COACHELLA INTERNATIONAL EXHIBITION OF PHOTOGRAPHY
JOSHUA TREE JUDGING



CVDCC Bronze

"WHITE IRIS"

BARBARA BURKE (USA)

PID Color General

Image No: 22

2022 COACHELLA INTERNATIONAL EXHIBITION OF PHOTOGRAPHY
JOSHUA TREE JUDGING



HM

“DOTD 5498”

NAN CARDER, FPSA, GMPA (USA)

PID Color General

Image No: 23

2022 COACHELLA INTERNATIONAL EXHIBITION OF PHOTOGRAPHY
JOSHUA TREE JUDGING



PSA Best of Show Gold

"KIT FOX 7737"

NAN CARDER, FPSA, GMPA (USA)

PID Color General

Image No: 24

**2022 COACHELLA INTERNATIONAL EXHIBITION OF PHOTOGRAPHY
JOSHUA TREE JUDGING**



“OATMAN 0942”

NAN CARDER, FPSA, GMPA (USA)

PID Color General

Image No: 25

**2022 COACHELLA INTERNATIONAL EXHIBITION OF PHOTOGRAPHY
JOSHUA TREE JUDGING**



“CITY OF ARTS AND SCIENCES 17”

GOTTFRIED CATANIA, PPSA (MALTA)

PID Color General

Image No: 26

2022 COACHELLA INTERNATIONAL EXHIBITION OF PHOTOGRAPHY
JOSHUA TREE JUDGING



HM

“CITY OF ARTS AND SCIENCES 6”

GOTTFRIED CATANIA, PPSA (MALTA)

PID Color General

Image No: 27

**2022 COACHELLA INTERNATIONAL EXHIBITION OF PHOTOGRAPHY
JOSHUA TREE JUDGING**



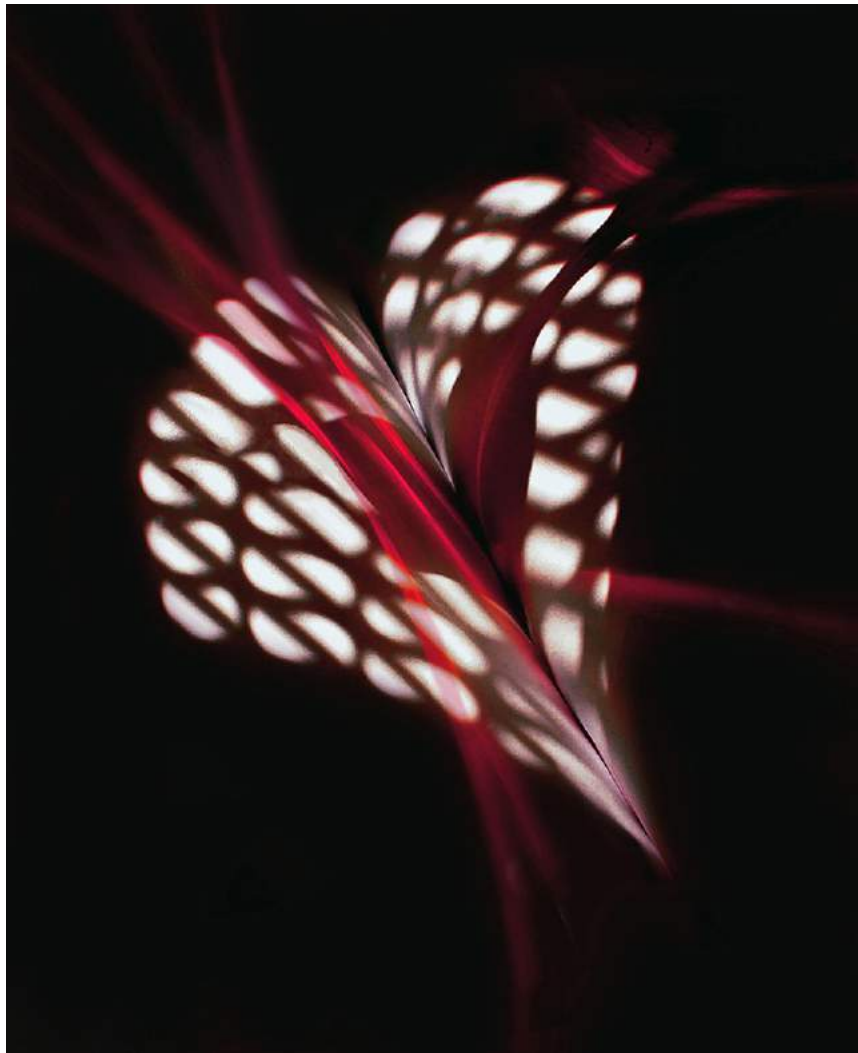
“SEAMSTRESS”

GOTTFRIED CATANIA, PPSA (MALTA)

PID Color General

Image No: 28

2022 COACHELLA INTERNATIONAL EXHIBITION OF PHOTOGRAPHY
JOSHUA TREE JUDGING



"FALL IN LOVE"

ANNA CHAN (USA)

PID Color General

Image No: 29

**2022 COACHELLA INTERNATIONAL EXHIBITION OF PHOTOGRAPHY
JOSHUA TREE JUDGING**



"FEEDING MY BABY"

SHERMAN CHEANG (MACAU)

PID Color Water

Image No: 30

2022 COACHELLA INTERNATIONAL EXHIBITION OF PHOTOGRAPHY
JOSHUA TREE JUDGING



HM

“HAPPY CHILD”

SHERMAN CHEANG (MACAU)

PID Color General

Image No: 31

2022 COACHELLA INTERNATIONAL EXHIBITION OF PHOTOGRAPHY
JOSHUA TREE JUDGING



Judge's Choice

"MORNING SAILING"

SHERMAN CHEANG (MACAU)

PID Color General

Image No: 32

2022 COACHELLA INTERNATIONAL EXHIBITION OF PHOTOGRAPHY
JOSHUA TREE JUDGING



“MY FOREHAND ATTACK”

SHERMAN CHEANG (MACAU)

PID Color General

Image No: 33

2022 COACHELLA INTERNATIONAL EXHIBITION OF PHOTOGRAPHY
JOSHUA TREE JUDGING



“WE LIKE DANCING”

SHERMAN CHEANG (MACAU)

PID Color General

Image No: 34

**2022 COACHELLA INTERNATIONAL EXHIBITION OF PHOTOGRAPHY
JOSHUA TREE JUDGING**



“WORKING IN THE MORNING”

SHERMAN CHEANG (MACAU)

PID Color Water

Image No: 35

2022 COACHELLA INTERNATIONAL EXHIBITION OF PHOTOGRAPHY
JOSHUA TREE JUDGING



HM

“BALLET ON FLOOR”

SHU CHEUK, GMPSA/S (USA)

PID Color General

Image No: 36

2022 COACHELLA INTERNATIONAL EXHIBITION OF PHOTOGRAPHY
JOSHUA TREE JUDGING



“HALEIGH LEAPING”

SHU CHEUK, GMPSA/S (USA)

PID Color General

Image No: 37

**2022 COACHELLA INTERNATIONAL EXHIBITION OF PHOTOGRAPHY
JOSHUA TREE JUDGING**



“BLANKET OF SNOW42”

BOB CHIU, GMPA, GPSA (USA)

PID Color Water

Image No: 38

**2022 COACHELLA INTERNATIONAL EXHIBITION OF PHOTOGRAPHY
JOSHUA TREE JUDGING**



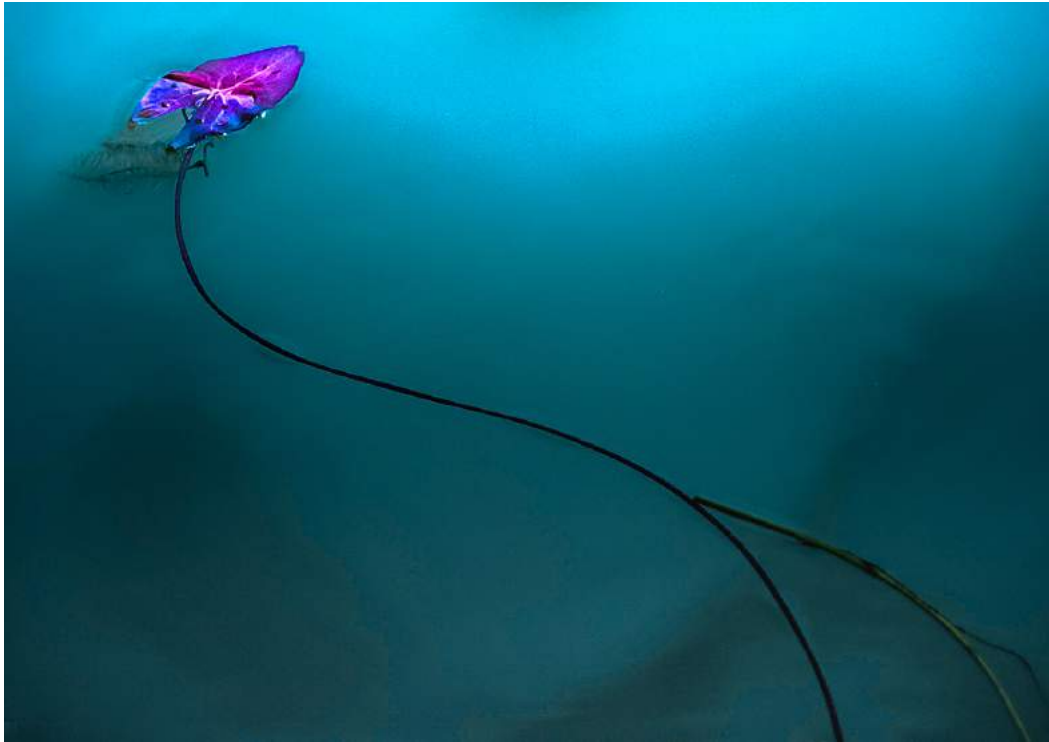
“EXPLORE YELLOWSTONE45”

BOB CHIU, GMPSA, GPSA (USA)

PID Color Water

Image No: 39

**2022 COACHELLA INTERNATIONAL EXHIBITION OF PHOTOGRAPHY
JOSHUA TREE JUDGING**



“BEST MOMENT”

CHI KUN CHOI, PPSA (HONG KONG)

PID Color General

Image No: 40

**2022 COACHELLA INTERNATIONAL EXHIBITION OF PHOTOGRAPHY
JOSHUA TREE JUDGING**



“CONVERGE TO SEA”

CHI KUN CHOI, PPSA (HONG KONG)

PID Color Water

Image No: 41



“ENJOYING WITH MY STAGE”

CHI KUN CHOI, PPSA (HONG KONG)

PID Color General

Image No: 42

**2022 COACHELLA INTERNATIONAL EXHIBITION OF PHOTOGRAPHY
JOSHUA TREE JUDGING**



“STRENGTH OF WATER”

CHI KUN CHOI, PPSA (HONG KONG)

PID Color Water

Image No: 43



“EVIL TWINS”

ROBERT CHRISTMAN (USA)

PID Color General

Image No: 44

2022 COACHELLA INTERNATIONAL EXHIBITION OF PHOTOGRAPHY
JOSHUA TREE JUDGING



“GALLUP POW WOW 3”

ROBERT CHRISTMAN (USA)

PID Color General

Image No: 45

**2022 COACHELLA INTERNATIONAL EXHIBITION OF PHOTOGRAPHY
JOSHUA TREE JUDGING**



"IBIS IN LATE LIGHT"

RICHARD CLORAN, HONPSA, GMPSA (USA)

PID Color General

Image No: 46

**2022 COACHELLA INTERNATIONAL EXHIBITION OF PHOTOGRAPHY
JOSHUA TREE JUDGING**



“FROSTED TREE AND HOT WATER”

BRIAN DAVIS, MPSA (ENGLAND)

PID Color General

Image No: 47

**2022 COACHELLA INTERNATIONAL EXHIBITION OF PHOTOGRAPHY
JOSHUA TREE JUDGING**



“JOKULSARLON GLACIAL LAGOON”

BRIAN DAVIS, MPSA (ENGLAND)

PID Color Water

Image No: 48

2022 COACHELLA INTERNATIONAL EXHIBITION OF PHOTOGRAPHY
JOSHUA TREE JUDGING



"LISTENING TO THE PAST"

BRIAN DAVIS, MPSA (ENGLAND)

PID Color General

Image No: 49

2022 COACHELLA INTERNATIONAL EXHIBITION OF PHOTOGRAPHY
JOSHUA TREE JUDGING



Judge's Choice

"BUTTERFLY EYE AND PROBOSCIS"

ROBERT DAVIS, MPSA (USA)

PID Color General

Image No: 50



"ICEBERG REFLECTIONS"

SHIRLEY DAVIS, EPSA (ENGLAND)

PID Color Water

Image No: 51



"A MOMENT IN TIME"

NILMINI DE SILVA, QPSA, BPSA (AUSTRALIA)

PID Color Water

Image No: 52

**2022 COACHELLA INTERNATIONAL EXHIBITION OF PHOTOGRAPHY
JOSHUA TREE JUDGING**



"CHALK ARTIST"

NILMINI DE SILVA, QPSA, BPSA (AUSTRALIA)

PID Color General

Image No: 53



“MELTING ICE”

NILMINI DE SILVA, QPSA, BPSA (AUSTRALIA)

PID Color Water

Image No: 54

**2022 COACHELLA INTERNATIONAL EXHIBITION OF PHOTOGRAPHY
JOSHUA TREE JUDGING**



“QUITE THE SPLASH”

NILMINI DE SILVA, QPSA, BPSA (AUSTRALIA)

PID Color Water

Image No: 55

**2022 COACHELLA INTERNATIONAL EXHIBITION OF PHOTOGRAPHY
JOSHUA TREE JUDGING**



“ATTRACTIVE KESTREL”

DONALD DEDONATO, GMP SA (USA)

PID Color General

Image No: 56

**2022 COACHELLA INTERNATIONAL EXHIBITION OF PHOTOGRAPHY
JOSHUA TREE JUDGING**



Judge's Choice

"AUTUMN LITTLE PIGEON RIVER"

DONALD DEDONATO, GMP SA (USA)

PID Color Water

Image No: 57

**2022 COACHELLA INTERNATIONAL EXHIBITION OF PHOTOGRAPHY
JOSHUA TREE JUDGING**



"ELEGANT BALD EAGLE"

DONALD DEDONATO, GMPA (USA)

PID Color General

Image No: 58

**2022 COACHELLA INTERNATIONAL EXHIBITION OF PHOTOGRAPHY
JOSHUA TREE JUDGING**



“IMPRESSIVE WINGSPAN DISPLAY”

DONALD DEDONATO, GMPA (USA)

PID Color General

Image No: 59

**2022 COACHELLA INTERNATIONAL EXHIBITION OF PHOTOGRAPHY
JOSHUA TREE JUDGING**



“WHITEWATER FALLS”

DONALD DEDONATO, GMP SA (USA)

PID Color Water

Image No: 60

**2022 COACHELLA INTERNATIONAL EXHIBITION OF PHOTOGRAPHY
JOSHUA TREE JUDGING**



“DUET”

KATHRYN DELANY (CANADA)

PID Color General

Image No: 61

**2022 COACHELLA INTERNATIONAL EXHIBITION OF PHOTOGRAPHY
JOSHUA TREE JUDGING**



"I'M NOT SHARING"

NICK DELANY (CANADA)

PID Color General

Image No: 62

**2022 COACHELLA INTERNATIONAL EXHIBITION OF PHOTOGRAPHY
JOSHUA TREE JUDGING**



“DEVOTION”

JANOS DEMETER, EPSA (HUNGARY)

PID Color General

Image No: 63

2022 COACHELLA INTERNATIONAL EXHIBITION OF PHOTOGRAPHY
JOSHUA TREE JUDGING



“LET YOURSELF OUT”

JANOS DEMETER, EPSA (HUNGARY)

PID Color General

Image No: 64

2022 COACHELLA INTERNATIONAL EXHIBITION OF PHOTOGRAPHY
JOSHUA TREE JUDGING



“TRAFFIC JAM”

JANOS DEMETER, EPSA (HUNGARY)

PID Color Water

Image No: 65

**2022 COACHELLA INTERNATIONAL EXHIBITION OF PHOTOGRAPHY
JOSHUA TREE JUDGING**



“YOSEMITE CHAPEL - WINTER 2019”

JENNIFER DOERRIE (USA)

PID Color General

Image No: 66

2022 COACHELLA INTERNATIONAL EXHIBITION OF PHOTOGRAPHY
JOSHUA TREE JUDGING



"THE STAR"

MINH DUONG (USA)

PID Color General

Image No: 67

**2022 COACHELLA INTERNATIONAL EXHIBITION OF PHOTOGRAPHY
JOSHUA TREE JUDGING**



“HOME IN THE SAND”

RITA ENGLAND (AUSTRALIA)

PID Color General

Image No: 68

**2022 COACHELLA INTERNATIONAL EXHIBITION OF PHOTOGRAPHY
JOSHUA TREE JUDGING**



“LOOK OUT”

RITA ENGLAND (AUSTRALIA)

PID Color General

Image No: 69

**2022 COACHELLA INTERNATIONAL EXHIBITION OF PHOTOGRAPHY
JOSHUA TREE JUDGING**



"POOL AREA CLOSED"

RITA ENGLAND (AUSTRALIA)

PID Color Water

Image No: 70

**2022 COACHELLA INTERNATIONAL EXHIBITION OF PHOTOGRAPHY
JOSHUA TREE JUDGING**



"PURPLE BRIDGE"

RITA ENGLAND (AUSTRALIA)

PID Color General

Image No: 71

**2022 COACHELLA INTERNATIONAL EXHIBITION OF PHOTOGRAPHY
JOSHUA TREE JUDGING**



“WASHING OVER THE POOL”

RITA ENGLAND (AUSTRALIA)

PID Color Water

Image No: 72

**2022 COACHELLA INTERNATIONAL EXHIBITION OF PHOTOGRAPHY
JOSHUA TREE JUDGING**



"A BIT OF WITCHERY"

DIANNE ENGLISH, PPSA (AUSTRALIA)

PID Color General

Image No: 73

**2022 COACHELLA INTERNATIONAL EXHIBITION OF PHOTOGRAPHY
JOSHUA TREE JUDGING**



“FLYING HIGH”

DIANNE ENGLISH, PPSA (AUSTRALIA)

PID Color General

Image No: 74

**2022 COACHELLA INTERNATIONAL EXHIBITION OF PHOTOGRAPHY
JOSHUA TREE JUDGING**



"A FOOT"

IAN ENGLISH, MPSA, BPSA (AUSTRALIA)

PID Color Water

Image No: 75

**2022 COACHELLA INTERNATIONAL EXHIBITION OF PHOTOGRAPHY
JOSHUA TREE JUDGING**



“LAKE NUGGA NUGGA SUNRISE QLD”

IAN ENGLISH, MPSA, BPSA (AUSTRALIA)

PID Color General

Image No: 76

**2022 COACHELLA INTERNATIONAL EXHIBITION OF PHOTOGRAPHY
JOSHUA TREE JUDGING**



“SURFING THE HARBOUR ENTRANCE”

IAN ENGLISH, MPSA, BPSA (AUSTRALIA)

PID Color Water

Image No: 77

2022 COACHELLA INTERNATIONAL EXHIBITION OF PHOTOGRAPHY
JOSHUA TREE JUDGING



CVDCC Gold

“TONGUE IN CHEEK”

IAN ENGLISH, MPSA, BPSA (AUSTRALIA)

PID Color Water

Image No: 78



"CLUSTER OF ORCHIDS"

CHARLOTTE FARLOW, PPSA (USA)

PID Color General

Image No: 79

**2022 COACHELLA INTERNATIONAL EXHIBITION OF PHOTOGRAPHY
JOSHUA TREE JUDGING**



"MISTY FALLS"

ROBERT FIELDS (USA)

PID Color Water

Image No: 80

**2022 COACHELLA INTERNATIONAL EXHIBITION OF PHOTOGRAPHY
JOSHUA TREE JUDGING**



"TROPICAL PALMS"

ROBERT FIELDS (USA)

PID Color Water

Image No: 81



“THE FROZEN WORLD17”

JIE FISCHER (USA)

PID Color General

Image No: 82

**2022 COACHELLA INTERNATIONAL EXHIBITION OF PHOTOGRAPHY
JOSHUA TREE JUDGING**



“BIG SPLASH”

GERALD FLEURY, QPSA, BPSA (USA)

PID Color Water

Image No: 83

**2022 COACHELLA INTERNATIONAL EXHIBITION OF PHOTOGRAPHY
JOSHUA TREE JUDGING**



“SWIRL”

GERALD FLEURY, QPSA, BPSA (USA)

PID Color Water

Image No: 84

**2022 COACHELLA INTERNATIONAL EXHIBITION OF PHOTOGRAPHY
JOSHUA TREE JUDGING**



“SURFERS PARADISE 7”

HELMUT FOERSTER, EPSA (GERMANY)

PID Color Water

Image No: 85

2022 COACHELLA INTERNATIONAL EXHIBITION OF PHOTOGRAPHY
JOSHUA TREE JUDGING



CVDCC Bronze

“CURL 2”

STEVEN FRIEDMAN (USA)

PID Color Water

Image No: 86

**2022 COACHELLA INTERNATIONAL EXHIBITION OF PHOTOGRAPHY
JOSHUA TREE JUDGING**



“MOONSET SHADOWS”

STEVEN FRIEDMAN (USA)

PID Color General

Image No: 87

**2022 COACHELLA INTERNATIONAL EXHIBITION OF PHOTOGRAPHY
JOSHUA TREE JUDGING**



“SPLIT WATERFALL AT GLADE CREEK”

JAMES GALLAGHER (USA)

PID Color Water

Image No: 88

2022 COACHELLA INTERNATIONAL EXHIBITION OF PHOTOGRAPHY
JOSHUA TREE JUDGING



CVDCC Silver

“CARVING THE WAVE”

HEIDI GAUTHREAUX (USA)

PID Color General

Image No: 89

**2022 COACHELLA INTERNATIONAL EXHIBITION OF PHOTOGRAPHY
JOSHUA TREE JUDGING**



“JOIRNEY OF WATER”

HEIDI GAUTHREAUX (USA)

PID Color Water

Image No: 90

2022 COACHELLA INTERNATIONAL EXHIBITION OF PHOTOGRAPHY
JOSHUA TREE JUDGING



“SIMPLICITY”

HEIDI GAUTHREAUX (USA)

PID Color General

Image No: 91

**2022 COACHELLA INTERNATIONAL EXHIBITION OF PHOTOGRAPHY
JOSHUA TREE JUDGING**



HM

“THOR'S WELL”

HEIDI GAUTHREAUX (USA)

PID Color Water

Image No: 92

**2022 COACHELLA INTERNATIONAL EXHIBITION OF PHOTOGRAPHY
JOSHUA TREE JUDGING**



“DAWN BREAKS ON THE PAST”

RICK GAUTHREAUX (USA)

PID Color General

Image No: 93

2022 COACHELLA INTERNATIONAL EXHIBITION OF PHOTOGRAPHY
JOSHUA TREE JUDGING



HM

“IN THE BUBBLE”

RICK GAUTHREAUX (USA)

PID Color Water

Image No: 94

**2022 COACHELLA INTERNATIONAL EXHIBITION OF PHOTOGRAPHY
JOSHUA TREE JUDGING**



“SILVER AND GOLD”

RICK GAUTHREAUX (USA)

PID Color Water

Image No: 95

**2022 COACHELLA INTERNATIONAL EXHIBITION OF PHOTOGRAPHY
JOSHUA TREE JUDGING**



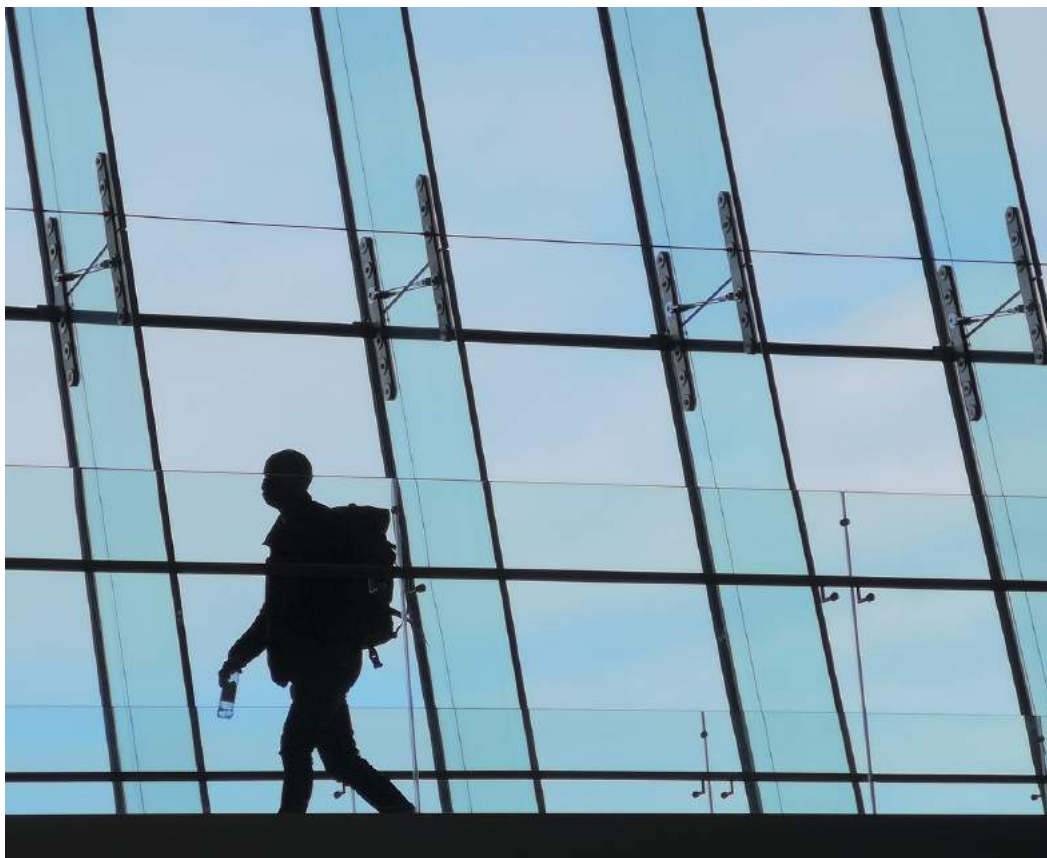
“WINDANSEA”

RICK GAUTHREAUX (USA)

PID Color Water

Image No: 96

**2022 COACHELLA INTERNATIONAL EXHIBITION OF PHOTOGRAPHY
JOSHUA TREE JUDGING**



“AIRPORT33”

MONICA GIUDICE, PPSA (ITALY)

PID Color General

Image No: 97

2022 COACHELLA INTERNATIONAL EXHIBITION OF PHOTOGRAPHY
JOSHUA TREE JUDGING



“GLACIER11”

MONICA GIUDICE, PPSA (ITALY)

PID Color Water

Image No: 98

2022 COACHELLA INTERNATIONAL EXHIBITION OF PHOTOGRAPHY
JOSHUA TREE JUDGING



“HOUSES AND THE SEA”

MONICA GIUDICE, PPSA (ITALY)

PID Color Water

Image No: 99

**2022 COACHELLA INTERNATIONAL EXHIBITION OF PHOTOGRAPHY
JOSHUA TREE JUDGING**



“FOUR”

LEAH GRAY, PPSA, BPSA (CANADA)

PID Color General

Image No: 100



“FLOWER AND HUMMER”

ISABEL GUERRA CLARK, PPSA (USA)

PID Color General

Image No: 101

**2022 COACHELLA INTERNATIONAL EXHIBITION OF PHOTOGRAPHY
JOSHUA TREE JUDGING**



“MILKY WAY AT SHIPROCK”

ISABEL GUERRA CLARK, PPSA (USA)

PID Color General

Image No: 102



“THE DISPUTE”

ISABEL GUERRA CLARK, PPSA (USA)

PID Color General

Image No: 103

**2022 COACHELLA INTERNATIONAL EXHIBITION OF PHOTOGRAPHY
JOSHUA TREE JUDGING**



"THE QUETZAL"

ISABEL GUERRA CLARK, PPSA (USA)

PID Color General

Image No: 104

**2022 COACHELLA INTERNATIONAL EXHIBITION OF PHOTOGRAPHY
JOSHUA TREE JUDGING**



"CURVED HILLSIDE"

CRAIG GURNETT (AUSTRALIA)

PID Color General

Image No: 105

**2022 COACHELLA INTERNATIONAL EXHIBITION OF PHOTOGRAPHY
JOSHUA TREE JUDGING**



"DOWN OVER THE PIER"

CRAIG GURNETT (AUSTRALIA)

PID Color Water

Image No: 106

**2022 COACHELLA INTERNATIONAL EXHIBITION OF PHOTOGRAPHY
JOSHUA TREE JUDGING**



HM

“ANAPAUSAS 90”

WOLFGANG HABRINGER (AUSTRIA)

PID Color General

Image No: 107

**2022 COACHELLA INTERNATIONAL EXHIBITION OF PHOTOGRAPHY
JOSHUA TREE JUDGING**



“HONGKONG 69”

WOLFGANG HABRINGER (AUSTRIA)

PID Color General

Image No: 108

**2022 COACHELLA INTERNATIONAL EXHIBITION OF PHOTOGRAPHY
JOSHUA TREE JUDGING**



“METEORA 05”

WOLFGANG HABRINGER (AUSTRIA)

PID Color General

Image No: 109

**2022 COACHELLA INTERNATIONAL EXHIBITION OF PHOTOGRAPHY
JOSHUA TREE JUDGING**



“SOLITUDE 33”

WOLFGANG HABRINGER (AUSTRIA)

PID Color General

Image No: 110

**2022 COACHELLA INTERNATIONAL EXHIBITION OF PHOTOGRAPHY
JOSHUA TREE JUDGING**



"BATELURE"

CHRISTINE HADFIELD (ENGLAND)

PID Color General

Image No: 111

2022 COACHELLA INTERNATIONAL EXHIBITION OF PHOTOGRAPHY
JOSHUA TREE JUDGING



HM

“HARVEST MOUSE DEXTERITY”

CHRISTINE HADFIELD (ENGLAND)

PID Color General

Image No: 112



“HIPPOS”

CHRISTINE HADFIELD (ENGLAND)

PID Color General

Image No: 113



“VERVETS PLAYING”

CHRISTINE HADFIELD (ENGLAND)

PID Color General

Image No: 114

**2022 COACHELLA INTERNATIONAL EXHIBITION OF PHOTOGRAPHY
JOSHUA TREE JUDGING**



“GULLFOSS WITH RAINBOW”

HERDIS HALVAS-NIELSEN, GMPSA (GERMANY)

PID Color Water

Image No: 115

**2022 COACHELLA INTERNATIONAL EXHIBITION OF PHOTOGRAPHY
JOSHUA TREE JUDGING**



“RINGDURCHBLICK”

RALF HANISCH, MPSA (GERMANY)

PID Color General

Image No: 116

**2022 COACHELLA INTERNATIONAL EXHIBITION OF PHOTOGRAPHY
JOSHUA TREE JUDGING**



HM

“WELCOME TO DARWIN”

SUSAN HANSELL, PPSA (AUSTRALIA)

PID Color Water

Image No: 117

2022 COACHELLA INTERNATIONAL EXHIBITION OF PHOTOGRAPHY
JOSHUA TREE JUDGING



“A HARD DAYS WORK”

MOGENS HERMANSEN (USA)

PID Color Water

Image No: 118

2022 COACHELLA INTERNATIONAL EXHIBITION OF PHOTOGRAPHY
JOSHUA TREE JUDGING



“RARE AND CLEAR EVENING IN SHANGHAI”

MOGENS HERMANSEN (USA)

PID Color General

Image No: 119

2022 COACHELLA INTERNATIONAL EXHIBITION OF PHOTOGRAPHY
JOSHUA TREE JUDGING



"AMPHITRITE"

ALEXANDER HOCHHAUS (GERMANY)

PID Color General

Image No: 120

**2022 COACHELLA INTERNATIONAL EXHIBITION OF PHOTOGRAPHY
JOSHUA TREE JUDGING**



"CLOUDED"

ALEXANDER HOCHHAUS (GERMANY)

PID Color General

Image No: 121

2022 COACHELLA INTERNATIONAL EXHIBITION OF PHOTOGRAPHY
JOSHUA TREE JUDGING



"LADY WITH DOG"

ALEXANDER HOCHHAUS (GERMANY)

PID Color General

Image No: 122

2022 COACHELLA INTERNATIONAL EXHIBITION OF PHOTOGRAPHY
JOSHUA TREE JUDGING



“DEWY DAMSEFLY 56”

JENNI HORSNELL, GMPA/G (AUSTRALIA)

PID Color General

Image No: 123



"DEWY SKIPPER 7"

JENNI HORSNELL, GMPA/G (AUSTRALIA)

PID Color General

Image No: 124

2022 COACHELLA INTERNATIONAL EXHIBITION OF PHOTOGRAPHY
JOSHUA TREE JUDGING



HM

“THREE ROSES IN VASE”

JENNI HORSNELL, GMPA/G (AUSTRALIA)

PID Color General

Image No: 125

**2022 COACHELLA INTERNATIONAL EXHIBITION OF PHOTOGRAPHY
JOSHUA TREE JUDGING**



"HAPPIEST DAY"

YOUMANS HSIONG, EPSA (USA)

PID Color General

Image No: 126

**2022 COACHELLA INTERNATIONAL EXHIBITION OF PHOTOGRAPHY
JOSHUA TREE JUDGING**



“REFLECTION CANYON 2022”

YOUMANS HSIONG, EPSA (USA)

PID Color General

Image No: 127

2022 COACHELLA INTERNATIONAL EXHIBITION OF PHOTOGRAPHY
JOSHUA TREE JUDGING



HM

“IN AND OUT OF THE BARREL”

SHELLEY HUGHES (USA)

PID Color Water

Image No: 128

**2022 COACHELLA INTERNATIONAL EXHIBITION OF PHOTOGRAPHY
JOSHUA TREE JUDGING**



“WATER”

SHELLEY HUGHES (USA)

PID Color Water

Image No: 129

**2022 COACHELLA INTERNATIONAL EXHIBITION OF PHOTOGRAPHY
JOSHUA TREE JUDGING**



“AEROBATIC LOOP”

GEORGE HUTCHISON, QPSA (USA)

PID Color General

Image No: 130

**2022 COACHELLA INTERNATIONAL EXHIBITION OF PHOTOGRAPHY
JOSHUA TREE JUDGING**



“AGAVE 002”

GEORGE HUTCHISON, QPSA (USA)

PID Color General

Image No: 131

**2022 COACHELLA INTERNATIONAL EXHIBITION OF PHOTOGRAPHY
JOSHUA TREE JUDGING**



“DESCHUTES RIVER”

GEORGE HUTCHISON, QPSA (USA)

PID Color Water

Image No: 132

**2022 COACHELLA INTERNATIONAL EXHIBITION OF PHOTOGRAPHY
JOSHUA TREE JUDGING**



"LAST LIGHT FLIGHT"

GEORGE HUTCHISON, QPSA (USA)

PID Color Water

Image No: 133

**2022 COACHELLA INTERNATIONAL EXHIBITION OF PHOTOGRAPHY
JOSHUA TREE JUDGING**



HM

“THE CHASE”

GEORGE HUTCHISON, QPSA (USA)

PID Color Water

Image No: 134

**2022 COACHELLA INTERNATIONAL EXHIBITION OF PHOTOGRAPHY
JOSHUA TREE JUDGING**



"AN EVENING ON THE MORRO DUNES"

JULIAN JOLLIFFE (USA)

PID Color General

Image No: 135

**2022 COACHELLA INTERNATIONAL EXHIBITION OF PHOTOGRAPHY
JOSHUA TREE JUDGING**



PSA Best of Show Gold

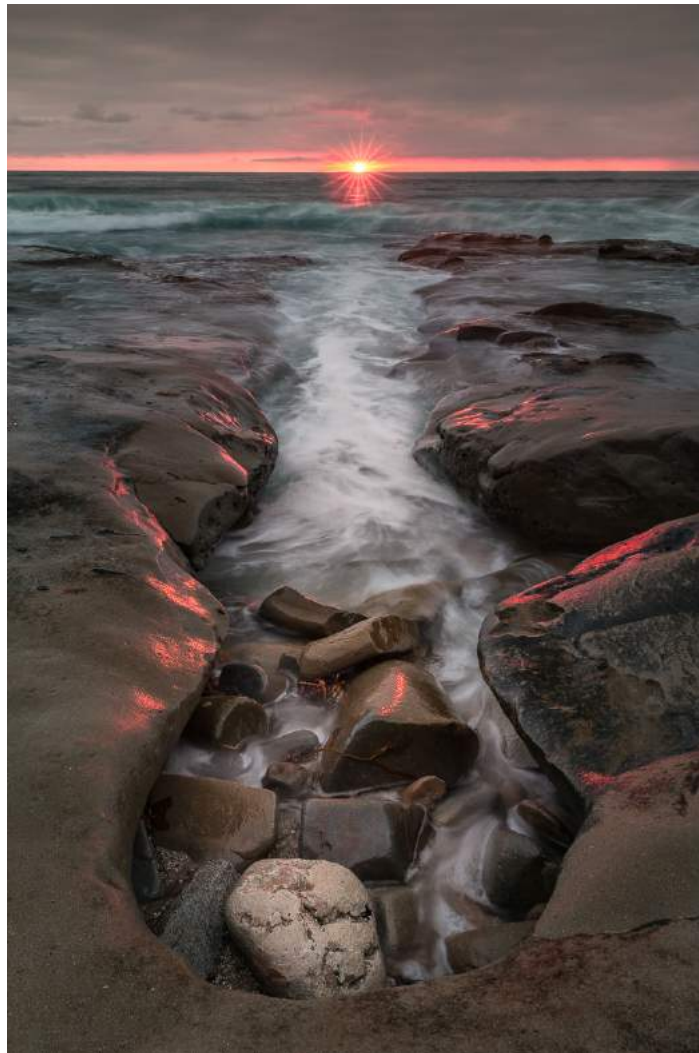
“CONVERGENCE”

JULIAN JOLLIFFE (USA)

PID Color Water

Image No: 136

2022 COACHELLA INTERNATIONAL EXHIBITION OF PHOTOGRAPHY
JOSHUA TREE JUDGING



CVDCC Bronze

“FIRE IN THE HOLE”

JULIAN JOLLIFFE (USA)

PID Color Water

Image No: 137

**2022 COACHELLA INTERNATIONAL EXHIBITION OF PHOTOGRAPHY
JOSHUA TREE JUDGING**



“LATE NIGHT IN A MOONLIT VALLEY”

JULIAN JOLLIFFE (USA)

PID Color General

Image No: 138

**2022 COACHELLA INTERNATIONAL EXHIBITION OF PHOTOGRAPHY
JOSHUA TREE JUDGING**



"RED LINE TO HOLLYWOOD"

JULIAN JOLLIFFE (USA)

PID Color General

Image No: 139

**2022 COACHELLA INTERNATIONAL EXHIBITION OF PHOTOGRAPHY
JOSHUA TREE JUDGING**



“SUNSET AT THE POTHOLES”

JULIAN JOLLIFFE (USA)

PID Color Water

Image No: 140

2022 COACHELLA INTERNATIONAL EXHIBITION OF PHOTOGRAPHY
JOSHUA TREE JUDGING



"MYOPIA_2021(1572)"

ANDREW KATSAMPES (USA)

PID Color General

Image No: 141

**2022 COACHELLA INTERNATIONAL EXHIBITION OF PHOTOGRAPHY
JOSHUA TREE JUDGING**



HM

“CASTING NET BY UBAN BRIDGE 103”

FRANCIS KING, GMPA/B (CANADA)

PID Color Water

Image No: 142

2022 COACHELLA INTERNATIONAL EXHIBITION OF PHOTOGRAPHY
JOSHUA TREE JUDGING

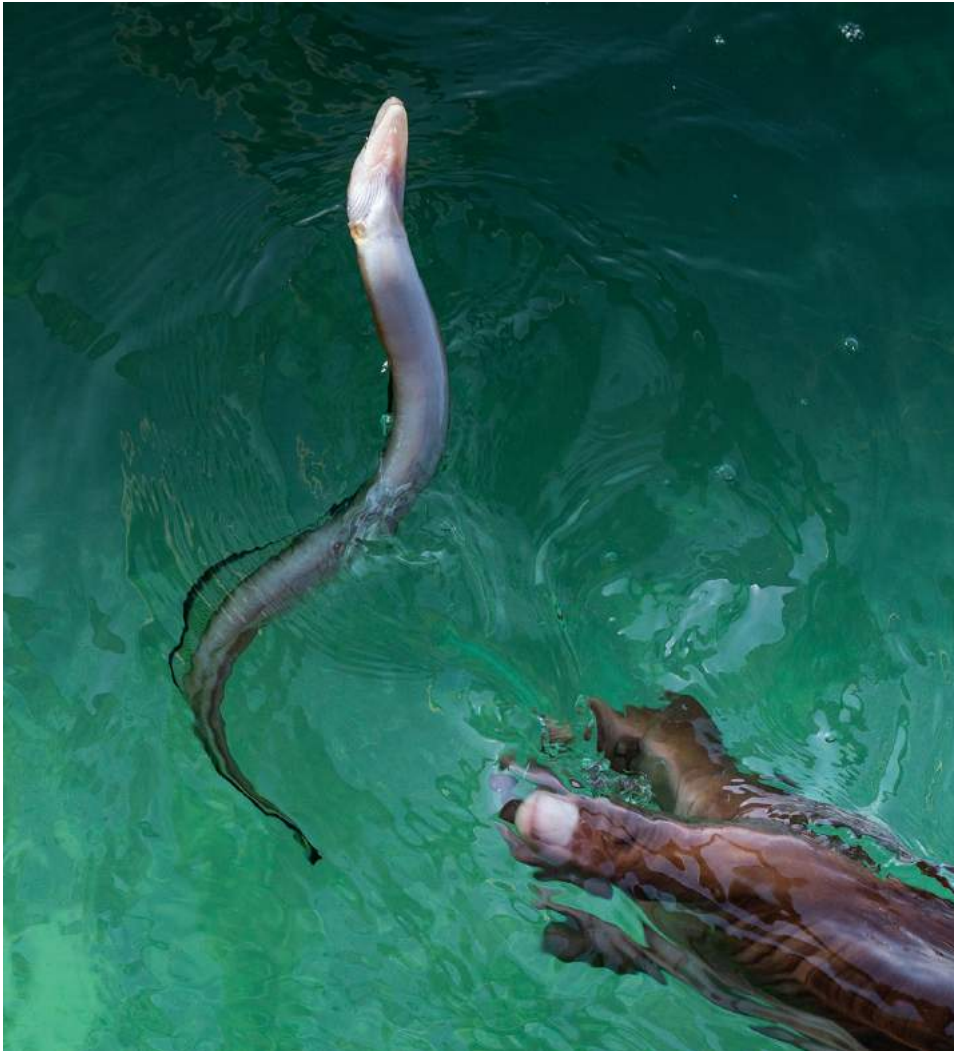


“DANCING 101”

FRANCIS KING, GMPSA/B (CANADA)

PID Color General

Image No: 143



“CATCHING AN EEL”

VALERIE KLEINDIENST (AUSTRALIA)

PID Color Water

Image No: 144

**2022 COACHELLA INTERNATIONAL EXHIBITION OF PHOTOGRAPHY
JOSHUA TREE JUDGING**



“GREY CLOUD OVER STORY BRIDGE”

VALERIE KLEINDIENST (AUSTRALIA)

PID Color General

Image No: 145

**2022 COACHELLA INTERNATIONAL EXHIBITION OF PHOTOGRAPHY
JOSHUA TREE JUDGING**

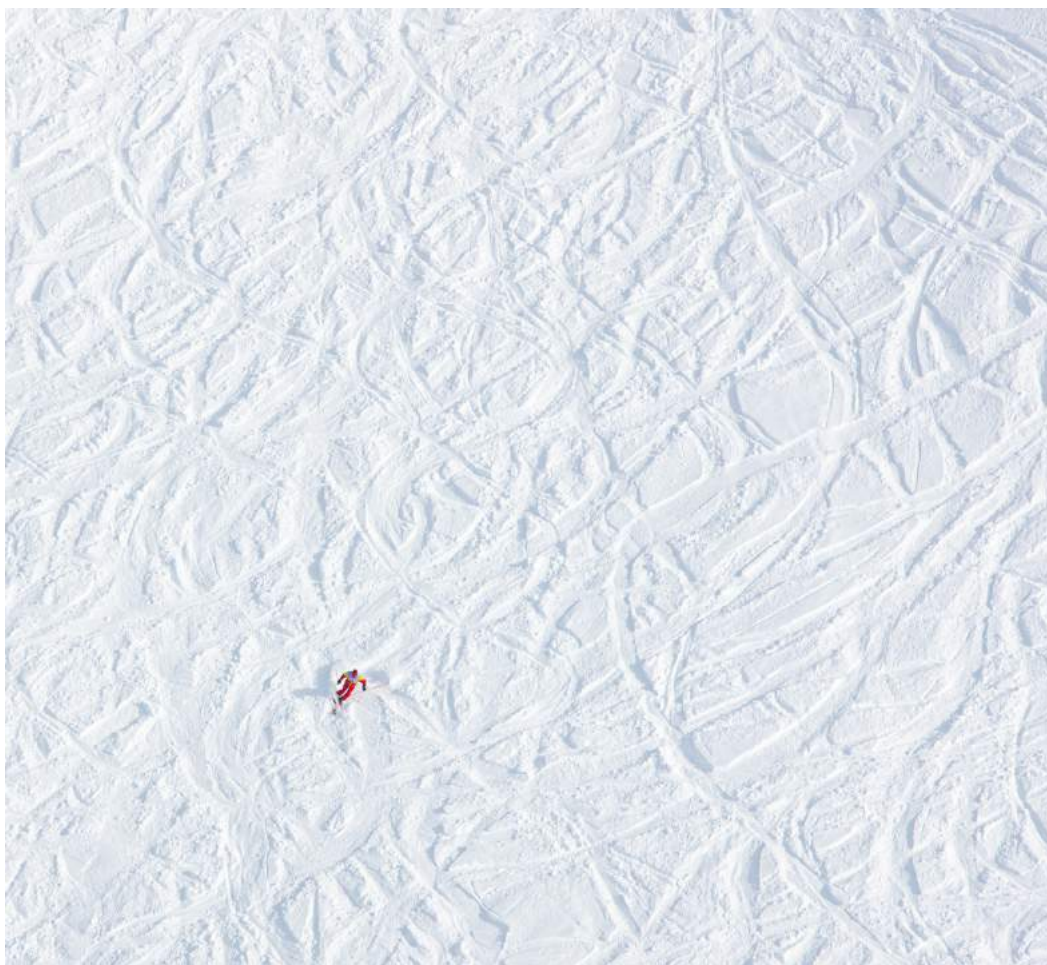


"SEEDS"

ANTTI KORPELA, PPSA (FINLAND)

PID Color Water

Image No: 146



“STROKES”

ANTTI KORPELA, PPSA (FINLAND)

PID Color General

Image No: 147

2022 COACHELLA INTERNATIONAL EXHIBITION OF PHOTOGRAPHY
JOSHUA TREE JUDGING



HM

“WAVE IS COMING”

ANTTI KORPELA, PPSA (FINLAND)

PID Color Water

Image No: 148



“DANCING CATTLE EGRET”

BARBARA KUEBLER, FPSA, MPSA (USA)

PID Color General

Image No: 149

2022 COACHELLA INTERNATIONAL EXHIBITION OF PHOTOGRAPHY
JOSHUA TREE JUDGING



Judge's Choice

"EVERGLADES CORN FIELD"

BARBARA KUEBLER, FPSA, MPSA (USA)

PID Color Water

Image No: 150

**2022 COACHELLA INTERNATIONAL EXHIBITION OF PHOTOGRAPHY
JOSHUA TREE JUDGING**



“ACRON & LEAF STILL LIFE”

WILLIAM LARUE (USA)

PID Color General

Image No: 151

**2022 COACHELLA INTERNATIONAL EXHIBITION OF PHOTOGRAPHY
JOSHUA TREE JUDGING**



"BLOWING FALL LEAVES"

WILLIAM LARUE (USA)

PID Color General

Image No: 152

2022 COACHELLA INTERNATIONAL EXHIBITION OF PHOTOGRAPHY
JOSHUA TREE JUDGING



HM

"FROST & ICE"

WILLIAM LARUE (USA)

PID Color Water

Image No: 153

2022 COACHELLA INTERNATIONAL EXHIBITION OF PHOTOGRAPHY
JOSHUA TREE JUDGING



CVDCC Bronze

“FROST & WATER DROPS”

WILLIAM LARUE (USA)

PID Color Water

Image No: 154

2022 COACHELLA INTERNATIONAL EXHIBITION OF PHOTOGRAPHY
JOSHUA TREE JUDGING



HM

“OLD MR WINTER”

WILLIAM LARUE (USA)

PID Color General

Image No: 155

2022 COACHELLA INTERNATIONAL EXHIBITION OF PHOTOGRAPHY
JOSHUA TREE JUDGING



HM

“RUSTY GARDEN BIKE”

WILLIAM LARUE (USA)

PID Color General

Image No: 156

2022 COACHELLA INTERNATIONAL EXHIBITION OF PHOTOGRAPHY
JOSHUA TREE JUDGING



"WIN OVER HUSKIES"

KAREN LEONARD, PPSA (USA)

PID Color General

Image No: 157

**2022 COACHELLA INTERNATIONAL EXHIBITION OF PHOTOGRAPHY
JOSHUA TREE JUDGING**



“STRAY BIRDS5”

FENGYING LONG, GMPA, BPSA (CHINA)

PID Color General

Image No: 158

**2022 COACHELLA INTERNATIONAL EXHIBITION OF PHOTOGRAPHY
JOSHUA TREE JUDGING**



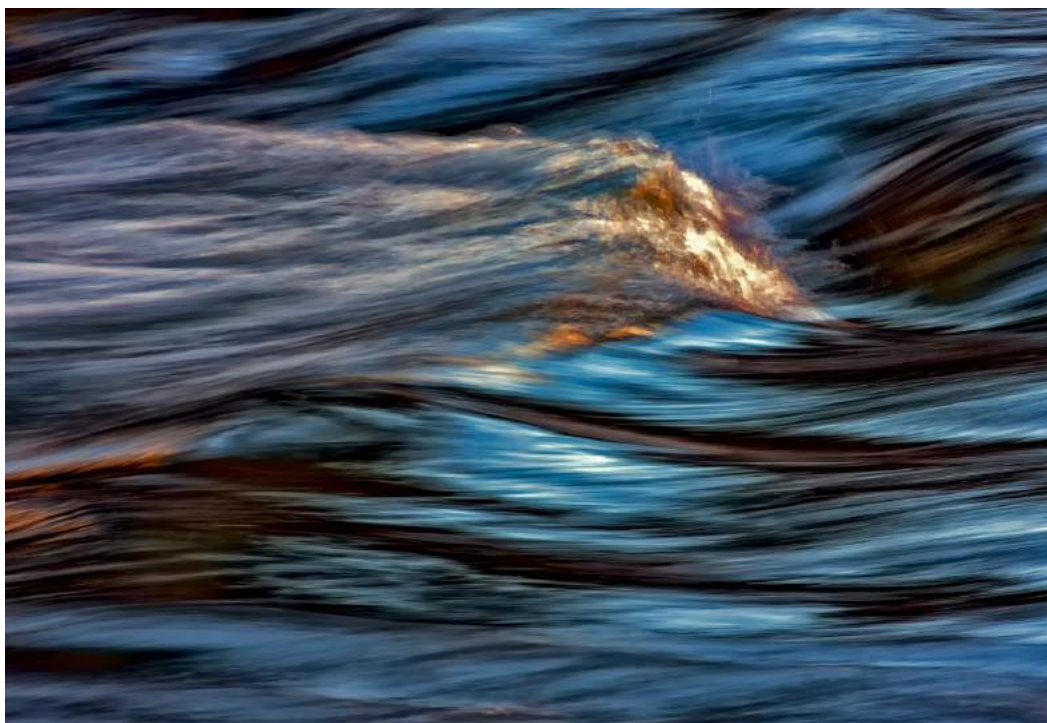
HM

“THE CRASHING WAVES”

RAUL LOPEZ, QPSA (USA)

PID Color Water

Image No: 159



"THE VIRGIN RIVER AT ZION"

RAUL LOPEZ, QPSA (USA)

PID Color Water

Image No: 160

**2022 COACHELLA INTERNATIONAL EXHIBITION OF PHOTOGRAPHY
JOSHUA TREE JUDGING**



“BEHIND OPEN DOORS”

STEPHEN LUSTIG (CANADA)

PID Color General

Image No: 161

**2022 COACHELLA INTERNATIONAL EXHIBITION OF PHOTOGRAPHY
JOSHUA TREE JUDGING**



"BROKEN DREAMS"

STEPHEN LUSTIG (CANADA)

PID Color General

Image No: 162

**2022 COACHELLA INTERNATIONAL EXHIBITION OF PHOTOGRAPHY
JOSHUA TREE JUDGING**



"GOLDEN HOURS"

LUC MAIRESSE, MPSA, SPSA (BELGIUM)

PID Color General

Image No: 163

2022 COACHELLA INTERNATIONAL EXHIBITION OF PHOTOGRAPHY
JOSHUA TREE JUDGING



HM

“WATER PARADISE”

LUC MAIRESSE, MPSA, SPSA (BELGIUM)

PID Color Water

Image No: 164

**2022 COACHELLA INTERNATIONAL EXHIBITION OF PHOTOGRAPHY
JOSHUA TREE JUDGING**



“WHEELERS”

LUC MAIRESSE, MPSA, SPSA (BELGIUM)

PID Color General

Image No: 165

2022 COACHELLA INTERNATIONAL EXHIBITION OF PHOTOGRAPHY
JOSHUA TREE JUDGING



CVDCC Silver

“BOAB SUNRISE”

MICHAEL S MARTIN (AUSTRALIA)

PID Color General

Image No: 166

2022 COACHELLA INTERNATIONAL EXHIBITION OF PHOTOGRAPHY
JOSHUA TREE JUDGING



HM

“OUT OF THE DEEP END”

MICHAEL S MARTIN (AUSTRALIA)

PID Color General

Image No: 167

**2022 COACHELLA INTERNATIONAL EXHIBITION OF PHOTOGRAPHY
JOSHUA TREE JUDGING**



"CAT ON A STOOL"

TERRY MIRANDA (USA)

PID Color General

Image No: 168

**2022 COACHELLA INTERNATIONAL EXHIBITION OF PHOTOGRAPHY
JOSHUA TREE JUDGING**



“TAKE ME WITH YOU”

TERRY MIRANDA (USA)

PID Color General

Image No: 169

2022 COACHELLA INTERNATIONAL EXHIBITION OF PHOTOGRAPHY
JOSHUA TREE JUDGING



CVDCC Gold

“VINTAGE LUGGAGE”

TERRY MIRANDA (USA)

PID Color General

Image No: 170

**2022 COACHELLA INTERNATIONAL EXHIBITION OF PHOTOGRAPHY
JOSHUA TREE JUDGING**



“TOWN BEACH MORNING SURF”

VICKI MORITZ, GMPA/B (AUSTRALIA)

PID Color Water

Image No: 171

2022 COACHELLA INTERNATIONAL EXHIBITION OF PHOTOGRAPHY
JOSHUA TREE JUDGING



CVDCC Silver

“TOWN BEACH MORNING WAVE”

VICKI MORITZ, GMPSA/B (AUSTRALIA)

PID Color Water

Image No: 172

2022 COACHELLA INTERNATIONAL EXHIBITION OF PHOTOGRAPHY
JOSHUA TREE JUDGING



“WHITE FACE WOODPECKER”

AMY MUSINSKY (USA)

PID Color General

Image No: 173

**2022 COACHELLA INTERNATIONAL EXHIBITION OF PHOTOGRAPHY
JOSHUA TREE JUDGING**



"MULTNOMAH FALLS LONG EXP"

KATHRYN NEWMAN (USA)

PID Color Water

Image No: 174

2022 COACHELLA INTERNATIONAL EXHIBITION OF PHOTOGRAPHY
JOSHUA TREE JUDGING



HM

“DANCE WITH COLOUR”

CHI FUN FANNY NG (HONG KONG)

PID Color General

Image No: 175

**2022 COACHELLA INTERNATIONAL EXHIBITION OF PHOTOGRAPHY
JOSHUA TREE JUDGING**



“LITTLE NAUGHTY”

CHI FUN FANNY NG (HONG KONG)

PID Color General

Image No: 176



“FEEDING”

TRUNG CANG NGUYEN (AUSTRALIA)

PID Color General

Image No: 177

**2022 COACHELLA INTERNATIONAL EXHIBITION OF PHOTOGRAPHY
JOSHUA TREE JUDGING**



"FIRST PRIORITY WAVE"

TRUNG CANG NGUYEN (AUSTRALIA)

PID Color General

Image No: 178

**2022 COACHELLA INTERNATIONAL EXHIBITION OF PHOTOGRAPHY
JOSHUA TREE JUDGING**



“CONCENTRATING ON BALANCE”

PETER JOHN O'BRIEN (AUSTRALIA)

PID Color General

Image No: 179

2022 COACHELLA INTERNATIONAL EXHIBITION OF PHOTOGRAPHY
JOSHUA TREE JUDGING



“VICTORY WHEELIE”

PETER JOHN O'BRIEN (AUSTRALIA)

PID Color General

Image No: 180



“ENCHANTED FLOWER”

YOUNG PAIK, APSA (USA)

PID Color General

Image No: 181

2022 COACHELLA INTERNATIONAL EXHIBITION OF PHOTOGRAPHY
JOSHUA TREE JUDGING



HM

“WATER LILY”

YOUNG PAIK, APSA (USA)

PID Color General

Image No: 182

**2022 COACHELLA INTERNATIONAL EXHIBITION OF PHOTOGRAPHY
JOSHUA TREE JUDGING**



“AFRICAN WILD DOG TUG OF WAR”

CRAIG PARKER, MPSA, BPSA (AUSTRALIA)

PID Color General

Image No: 183

**2022 COACHELLA INTERNATIONAL EXHIBITION OF PHOTOGRAPHY
JOSHUA TREE JUDGING**



“SURFING 06”

CRAIG PARKER, MPSA, BPSA (AUSTRALIA)

PID Color Water

Image No: 184

2022 COACHELLA INTERNATIONAL EXHIBITION OF PHOTOGRAPHY
JOSHUA TREE JUDGING



"WEAVING UPSIDE DOWN"

CRAIG PARKER, MPSA, BPSA (AUSTRALIA)

PID Color General

Image No: 185

2022 COACHELLA INTERNATIONAL EXHIBITION OF PHOTOGRAPHY
JOSHUA TREE JUDGING



“UP AND DOWN”

ELIZABETH PASSUELLO, EPSA (NEW ZEALAND)

PID Color General

Image No: 186



Judge's Choice

"CHILD OF THE FOREST"

ANGELA POGGIONI, EPSA (USA)

PID Color General

Image No: 187

**2022 COACHELLA INTERNATIONAL EXHIBITION OF PHOTOGRAPHY
JOSHUA TREE JUDGING**



“LIONS QUENCHING THEIR THIRST”

ANGELA POGGIONI, EPSA (USA)

PID Color General

Image No: 188

2022 COACHELLA INTERNATIONAL EXHIBITION OF PHOTOGRAPHY
JOSHUA TREE JUDGING



“PIONEER LADY”

JUDITH PONTI-SGARGI (CANADA)

PID Color General

Image No: 189

**2022 COACHELLA INTERNATIONAL EXHIBITION OF PHOTOGRAPHY
JOSHUA TREE JUDGING**



“TANGERINES”

JUDITH PONTI-SGARGI (CANADA)

PID Color General

Image No: 190

**2022 COACHELLA INTERNATIONAL EXHIBITION OF PHOTOGRAPHY
JOSHUA TREE JUDGING**



“BE SILL MY SOUL”

SHARON PRISLIPSKY, APSA, PPSA (USA)

PID Color Water

Image No: 191

**2022 COACHELLA INTERNATIONAL EXHIBITION OF PHOTOGRAPHY
JOSHUA TREE JUDGING**



"FULL MOON OVER SUNFLOWERS"

SHARON PRISLIPSKY, APSA, PPSA (USA)

PID Color General

Image No: 192

**2022 COACHELLA INTERNATIONAL EXHIBITION OF PHOTOGRAPHY
JOSHUA TREE JUDGING**



“BURNEY FALLS”

MICHAEL REYBURN (USA)

PID Color Water

Image No: 193

2022 COACHELLA INTERNATIONAL EXHIBITION OF PHOTOGRAPHY
JOSHUA TREE JUDGING



CVDCC Silver

“THE EYE OF THE BOAT”

MICHAEL REYBURN (USA)

PID Color Water

Image No: 194

**2022 COACHELLA INTERNATIONAL EXHIBITION OF PHOTOGRAPHY
JOSHUA TREE JUDGING**



“CURVES ON LAKE ARGYLE”

ELIZABETH RILEY (AUSTRALIA)

PID Color General

Image No: 195

**2022 COACHELLA INTERNATIONAL EXHIBITION OF PHOTOGRAPHY
JOSHUA TREE JUDGING**



“LOW TIDE MEANDER”

ELIZABETH RILEY (AUSTRALIA)

PID Color Water

Image No: 196

**2022 COACHELLA INTERNATIONAL EXHIBITION OF PHOTOGRAPHY
JOSHUA TREE JUDGING**

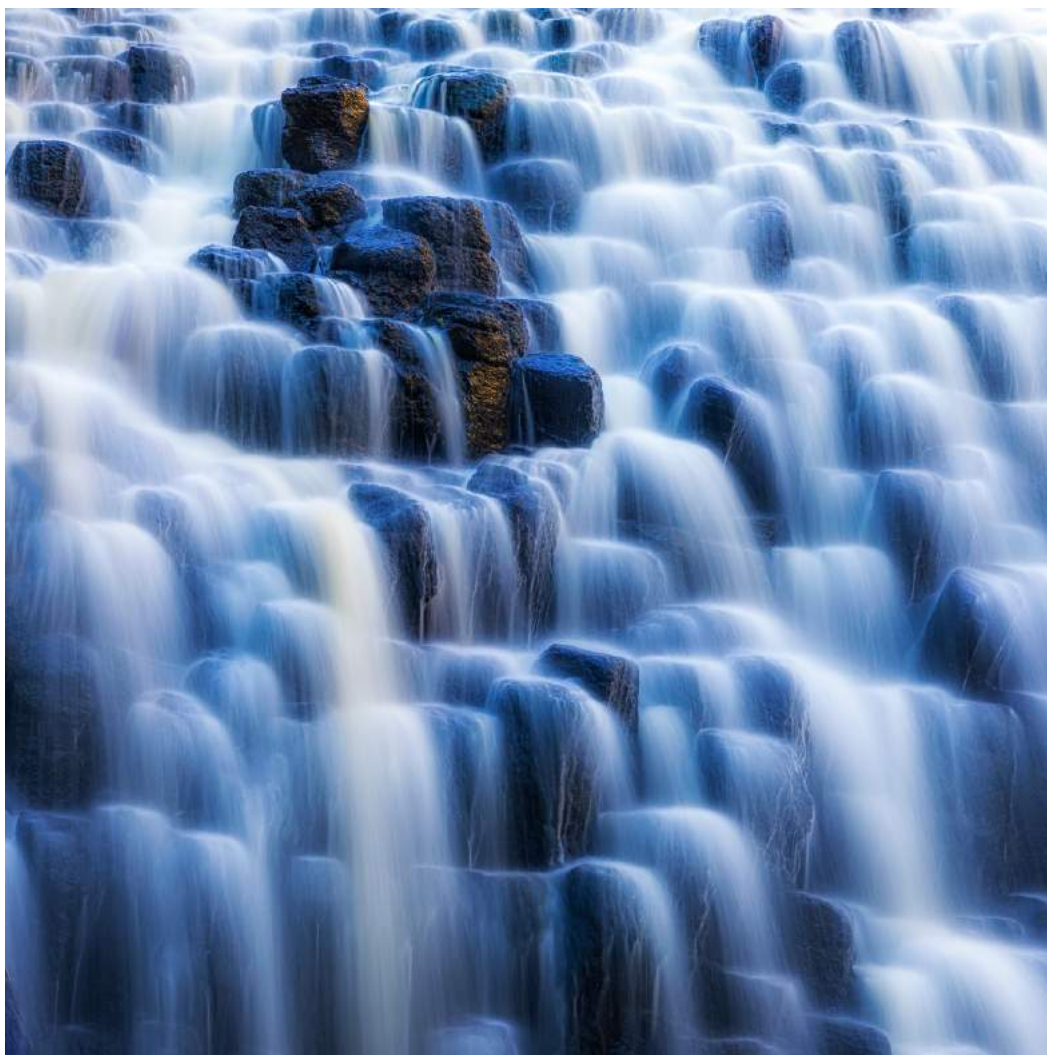


“SEA STRAND”

ELIZABETH RILEY (AUSTRALIA)

PID Color Water

Image No: 197



“DIP FALLS”

MARTIN RILEY (AUSTRALIA)

PID Color Water

Image No: 198

2022 COACHELLA INTERNATIONAL EXHIBITION OF PHOTOGRAPHY
JOSHUA TREE JUDGING



HM

"THE COPPER TREE"

MARTIN RILEY (AUSTRALIA)

PID Color General

Image No: 199



“THE TURQUOISE WAVE”

MARTIN RILEY (AUSTRALIA)

PID Color Water

Image No: 200

2022 COACHELLA INTERNATIONAL EXHIBITION OF PHOTOGRAPHY
JOSHUA TREE JUDGING



"TIDAL CREATIONS"

MARTIN RILEY (AUSTRALIA)

PID Color General

Image No: 201

2022 COACHELLA INTERNATIONAL EXHIBITION OF PHOTOGRAPHY
JOSHUA TREE JUDGING



"TUK TUK SHELTER"

MARTIN RILEY (AUSTRALIA)

PID Color General

Image No: 202

**2022 COACHELLA INTERNATIONAL EXHIBITION OF PHOTOGRAPHY
JOSHUA TREE JUDGING**



“COWBOY N HORSE GETTING WET”

LILLIAN ROBERTS, EPSA (USA)

PID Color Water

Image No: 203

**2022 COACHELLA INTERNATIONAL EXHIBITION OF PHOTOGRAPHY
JOSHUA TREE JUDGING**



"W DIAMONDBACK WHIP TONGUE"

LILLIAN ROBERTS, EPSA (USA)

PID Color General

Image No: 204

**2022 COACHELLA INTERNATIONAL EXHIBITION OF PHOTOGRAPHY
JOSHUA TREE JUDGING**



HM

“MONUMENT VALLEY SUNRISE”

ERIK ROSENGREN, FPSA, PPSA (USA)

PID Color General

Image No: 205

**2022 COACHELLA INTERNATIONAL EXHIBITION OF PHOTOGRAPHY
JOSHUA TREE JUDGING**



"BREWING STORM"

PETER ROUPAS (AUSTRALIA)

PID Color Water

Image No: 206

**2022 COACHELLA INTERNATIONAL EXHIBITION OF PHOTOGRAPHY
JOSHUA TREE JUDGING**



“SWEEPING ROCK SHELF”

PETER ROUPAS (AUSTRALIA)

PID Color Water

Image No: 207

**2022 COACHELLA INTERNATIONAL EXHIBITION OF PHOTOGRAPHY
JOSHUA TREE JUDGING**



“HOMING2”

SHIN WOO RYU, EPSA (SOUTH KOREA)

PID Color General

Image No: 208

**2022 COACHELLA INTERNATIONAL EXHIBITION OF PHOTOGRAPHY
JOSHUA TREE JUDGING**



“RAFTING2”

SHIN WOO RYU, EPSA (SOUTH KOREA)

PID Color Water

Image No: 209

**2022 COACHELLA INTERNATIONAL EXHIBITION OF PHOTOGRAPHY
JOSHUA TREE JUDGING**



“SUNSET 02”

SHIN WOO RYU, EPSA (SOUTH KOREA)

PID Color General

Image No: 210

**2022 COACHELLA INTERNATIONAL EXHIBITION OF PHOTOGRAPHY
JOSHUA TREE JUDGING**



“LAGUNA COLORADA”

GUY B. SAMOYULT, APSA, GMPA (FRANCE)

PID Color General

Image No: 211

**2022 COACHELLA INTERNATIONAL EXHIBITION OF PHOTOGRAPHY
JOSHUA TREE JUDGING**



"THE BRIDGE"

IVANA SANCANDI (ITALY)

PID Color General

Image No: 212

**2022 COACHELLA INTERNATIONAL EXHIBITION OF PHOTOGRAPHY
JOSHUA TREE JUDGING**



"TIME OF PRAYER"

IVANA SANCANDI (ITALY)

PID Color General

Image No: 213

2022 COACHELLA INTERNATIONAL EXHIBITION OF PHOTOGRAPHY
JOSHUA TREE JUDGING



"FISHING TRAPS"

J.R. SCHNELZER, FPSA, MPSA2 (USA)

PID Color Water

Image No: 214

2022 COACHELLA INTERNATIONAL EXHIBITION OF PHOTOGRAPHY
JOSHUA TREE JUDGING



“SMOKEY JOE”

J.R. SCHNELZER, FPSA, MPSA2 (USA)

PID Color General

Image No: 215

**2022 COACHELLA INTERNATIONAL EXHIBITION OF PHOTOGRAPHY
JOSHUA TREE JUDGING**



“BEACH WALK”

LISA SCHNELZER, PPSA (USA)

PID Color Water

Image No: 216

**2022 COACHELLA INTERNATIONAL EXHIBITION OF PHOTOGRAPHY
JOSHUA TREE JUDGING**



“SADHU OF VARANASI”

LISA SCHNELZER, PPSA (USA)

PID Color General

Image No: 217

**2022 COACHELLA INTERNATIONAL EXHIBITION OF PHOTOGRAPHY
JOSHUA TREE JUDGING**



“SKULL AND SAND”

LISA SCHNELZER, PPSA (USA)

PID Color General

Image No: 218



“CARE 1”

WOLFGANG SCHWEDEN, GMPSA/G (GERMANY)

PID Color General

Image No: 219

**2022 COACHELLA INTERNATIONAL EXHIBITION OF PHOTOGRAPHY
JOSHUA TREE JUDGING**



“ARCHANGLE FALLS 2”

PETER SCIFRES, GPSA (USA)

PID Color Water

Image No: 220

**2022 COACHELLA INTERNATIONAL EXHIBITION OF PHOTOGRAPHY
JOSHUA TREE JUDGING**



“CATHEDRAL PEAK”

PETER SCIFRES, GPSA (USA)

PID Color General

Image No: 221

**2022 COACHELLA INTERNATIONAL EXHIBITION OF PHOTOGRAPHY
JOSHUA TREE JUDGING**



“MESA ARCH 2”

PETER SCIFRES, GPSA (USA)

PID Color General

Image No: 222

2022 COACHELLA INTERNATIONAL EXHIBITION OF PHOTOGRAPHY
JOSHUA TREE JUDGING



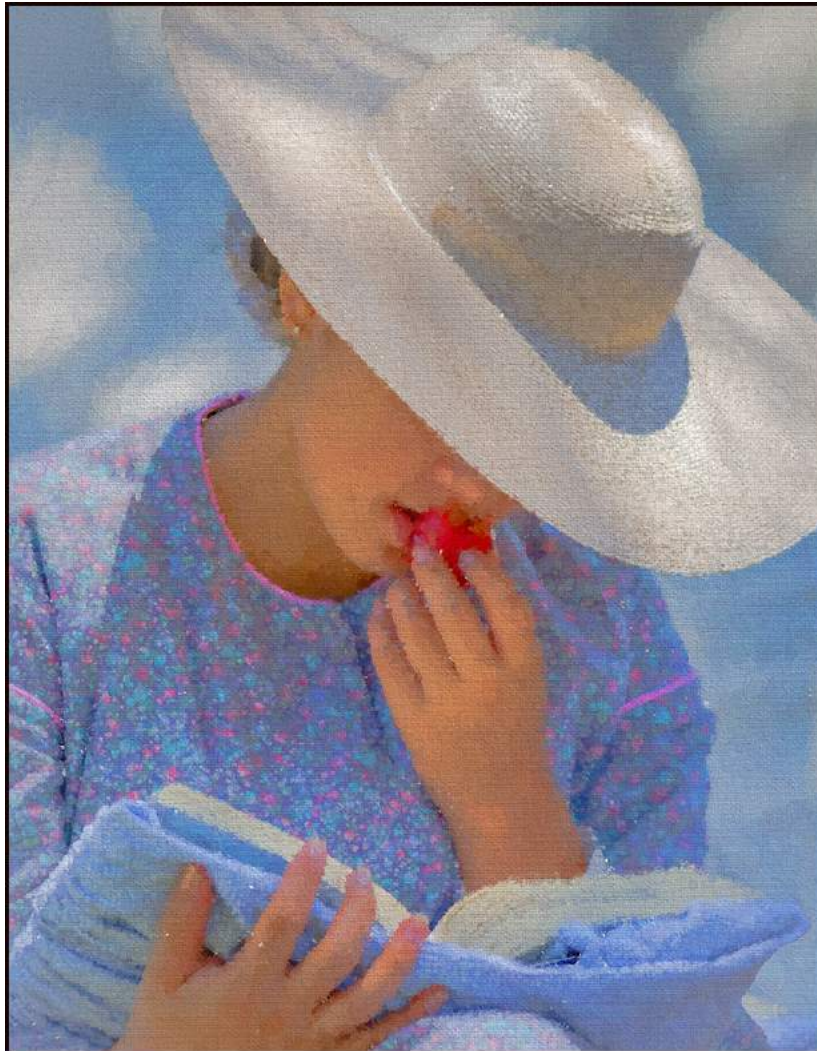
“DANCE PARTNERS”

DEBORAH SEIBLY (USA)

PID Color General

Image No: 223

2022 COACHELLA INTERNATIONAL EXHIBITION OF PHOTOGRAPHY
JOSHUA TREE JUDGING



"SUMMER AFTERNOON"

DEBORAH SEIBLY (USA)

PID Color General

Image No: 224

2022 COACHELLA INTERNATIONAL EXHIBITION OF PHOTOGRAPHY
JOSHUA TREE JUDGING



HM

“BEHIND THE TRUTH 1”

AVIK SETT, EPSA (INDIA)

PID Color General

Image No: 225

**2022 COACHELLA INTERNATIONAL EXHIBITION OF PHOTOGRAPHY
JOSHUA TREE JUDGING**



“DRISTI 3542”

AVIK SETT, EPSA (INDIA)

PID Color General

Image No: 226

2022 COACHELLA INTERNATIONAL EXHIBITION OF PHOTOGRAPHY
JOSHUA TREE JUDGING



CVDCC Bronze

“FLOWER GIRL ”

AVIK SETT, EPSA (INDIA)

PID Color General

Image No: 227

2022 COACHELLA INTERNATIONAL EXHIBITION OF PHOTOGRAPHY
JOSHUA TREE JUDGING



HM

“IPSITA 55”

AVIK SETT, EPSA (INDIA)

PID Color General

Image No: 228



“PLASTIC BUBBLE FUN”

SCOTT SHACKELFORD (USA)

PID Color Water

Image No: 229

2022 COACHELLA INTERNATIONAL EXHIBITION OF PHOTOGRAPHY
JOSHUA TREE JUDGING



"BETWEEN WATERCLOUDS"

JIAHU SHE (CHINA)

PID Color Water

Image No: 230

**2022 COACHELLA INTERNATIONAL EXHIBITION OF PHOTOGRAPHY
JOSHUA TREE JUDGING**



"CHASE THE MOON"

JIAHU SHE (CHINA)

PID Color General

Image No: 231

2022 COACHELLA INTERNATIONAL EXHIBITION OF PHOTOGRAPHY
JOSHUA TREE JUDGING



“RIDE ON THE BEAUTY BACK GRASSLAND”

JIAHU SHE (CHINA)

PID Color General

Image No: 232

2022 COACHELLA INTERNATIONAL EXHIBITION OF PHOTOGRAPHY
JOSHUA TREE JUDGING



“SAREE SHOPPING 0186”

BARUN SINHA (INDIA)

PID Color General

Image No: 233

**2022 COACHELLA INTERNATIONAL EXHIBITION OF PHOTOGRAPHY
JOSHUA TREE JUDGING**



HM

“A BOY AND HIS DOG”

GRAHAME SMITH (AUSTRALIA)

PID Color General

Image No: 234

2022 COACHELLA INTERNATIONAL EXHIBITION OF PHOTOGRAPHY
JOSHUA TREE JUDGING



"MADEMOISELLE CARA"

GRAHAME SMITH (AUSTRALIA)

PID Color General

Image No: 235

2022 COACHELLA INTERNATIONAL EXHIBITION OF PHOTOGRAPHY
JOSHUA TREE JUDGING



"MOLLY ON COUCH"

GRAHAME SMITH (AUSTRALIA)

PID Color General

Image No: 236

2022 COACHELLA INTERNATIONAL EXHIBITION OF PHOTOGRAPHY
JOSHUA TREE JUDGING



“THE BOOKWORM”

GRAHAME SMITH (AUSTRALIA)

PID Color General

Image No: 237

**2022 COACHELLA INTERNATIONAL EXHIBITION OF PHOTOGRAPHY
JOSHUA TREE JUDGING**



"SMALL CASKADE"

VALENTINA SOKOLSKAYA, APSA, EPSA (USA)

PID Color Water

Image No: 238

**2022 COACHELLA INTERNATIONAL EXHIBITION OF PHOTOGRAPHY
JOSHUA TREE JUDGING**



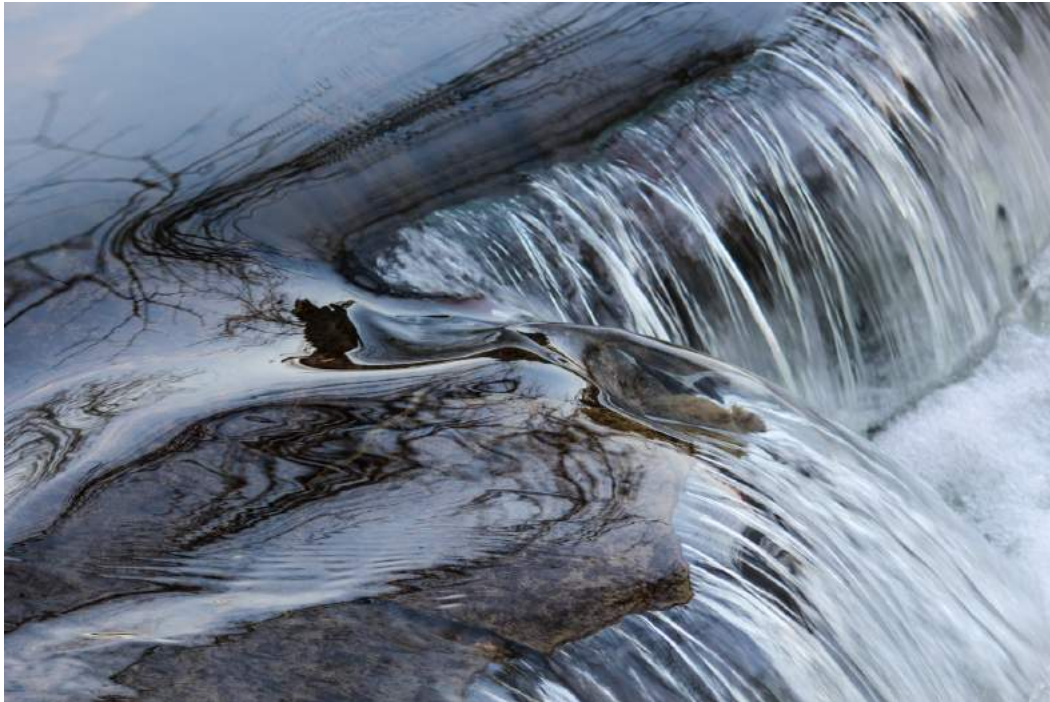
“SPIDER GEOMETRY”

VALENTINA SOKOLSKAYA, APSA, EPSA (USA)

PID Color Water

Image No: 239

**2022 COACHELLA INTERNATIONAL EXHIBITION OF PHOTOGRAPHY
JOSHUA TREE JUDGING**



“CREEK DISTORTIONS”

OLEG SOKOLSKY, PPSA (USA)

PID Color Water

Image No: 240

**2022 COACHELLA INTERNATIONAL EXHIBITION OF PHOTOGRAPHY
JOSHUA TREE JUDGING**



"MURMURATION II"

OLEG SOKOLSKY, PPSA (USA)

PID Color General

Image No: 241

**2022 COACHELLA INTERNATIONAL EXHIBITION OF PHOTOGRAPHY
JOSHUA TREE JUDGING**



“CAYUCOS PIER GULL AND SURF-01”

PAUL SPEAKER, PPSA (USA)

PID Color Water

Image No: 242

**2022 COACHELLA INTERNATIONAL EXHIBITION OF PHOTOGRAPHY
JOSHUA TREE JUDGING**



“COAL CREEK FALLS”

GLENYS STEEGH (NEW ZEALAND)

PID Color Water

Image No: 243

**2022 COACHELLA INTERNATIONAL EXHIBITION OF PHOTOGRAPHY
JOSHUA TREE JUDGING**



“THE CLASH”

GLENYS STEEGH (NEW ZEALAND)

PID Color Water

Image No: 244

2022 COACHELLA INTERNATIONAL EXHIBITION OF PHOTOGRAPHY
JOSHUA TREE JUDGING



“BUCKING BULL OVER COWBOY 0903”

CHARLES STRICKER, EPSA (USA)

PID Color General

Image No: 245

**2022 COACHELLA INTERNATIONAL EXHIBITION OF PHOTOGRAPHY
JOSHUA TREE JUDGING**



“WAVES ALONG THE SHORE”

RICK STROBAUGH (USA)

PID Color Water

Image No: 246

**2022 COACHELLA INTERNATIONAL EXHIBITION OF PHOTOGRAPHY
JOSHUA TREE JUDGING**



“SCALE AND ROSES”

DIAHANN TANKE (USA)

PID Color General

Image No: 247

**2022 COACHELLA INTERNATIONAL EXHIBITION OF PHOTOGRAPHY
JOSHUA TREE JUDGING**



"HEAD IN THE CLOUDS"

NEVILLE THOROGOOD (AUSTRALIA)

PID Color Water

Image No: 248

**2022 COACHELLA INTERNATIONAL EXHIBITION OF PHOTOGRAPHY
JOSHUA TREE JUDGING**



"NUMBER ONE"

NEVILLE THOROGOOD (AUSTRALIA)

PID Color General

Image No: 249

**2022 COACHELLA INTERNATIONAL EXHIBITION OF PHOTOGRAPHY
JOSHUA TREE JUDGING**



"ON THE TWINE"

NEVILLE THOROGOOD (AUSTRALIA)

PID Color General

Image No: 250

**2022 COACHELLA INTERNATIONAL EXHIBITION OF PHOTOGRAPHY
JOSHUA TREE JUDGING**



Judge's Choice

"OVER THE FALLS"

NEVILLE THOROGOOD (AUSTRALIA)

PID Color Water

Image No: 251

**2022 COACHELLA INTERNATIONAL EXHIBITION OF PHOTOGRAPHY
JOSHUA TREE JUDGING**



“WALKING IN THE RAIN”

NEVILLE THOROGOOD (AUSTRALIA)

PID Color General

Image No: 252

2022 COACHELLA INTERNATIONAL EXHIBITION OF PHOTOGRAPHY
JOSHUA TREE JUDGING



CVDCC Bronze

“OBLIVIOUS”

CRAIG TOMS (USA)

PID Color General

Image No: 253

**2022 COACHELLA INTERNATIONAL EXHIBITION OF PHOTOGRAPHY
JOSHUA TREE JUDGING**



“PARTLY CLOUDY”

CRAIG TOMS (USA)

PID Color General

Image No: 254

**2022 COACHELLA INTERNATIONAL EXHIBITION OF PHOTOGRAPHY
JOSHUA TREE JUDGING**



“COLLISION COURSE”

JEFFREY VENNING, EPSA (AUSTRALIA)

PID Color Water

Image No: 255

**2022 COACHELLA INTERNATIONAL EXHIBITION OF PHOTOGRAPHY
JOSHUA TREE JUDGING**



HM

“NO RESISTANCE IN THE WIND AND SNOW”

YICHI WANG (CHINA)

PID Color General

Image No: 256

**2022 COACHELLA INTERNATIONAL EXHIBITION OF PHOTOGRAPHY
JOSHUA TREE JUDGING**



“CHINGMA BRIDGE TO AIRPORT HKG”

JAMES WAT (USA)

PID Color General

Image No: 257

**2022 COACHELLA INTERNATIONAL EXHIBITION OF PHOTOGRAPHY
JOSHUA TREE JUDGING**



"OREGON WAVES OF GOLD"

ALICE MARIE WAY (USA)

PID Color Water

Image No: 258

2022 COACHELLA INTERNATIONAL EXHIBITION OF PHOTOGRAPHY
JOSHUA TREE JUDGING



“SWAN FLOWER WITH HOOD”

ALICE MARIE WAY (USA)

PID Color General

Image No: 259

**2022 COACHELLA INTERNATIONAL EXHIBITION OF PHOTOGRAPHY
JOSHUA TREE JUDGING**



“MAGIA BLANCA FALLS”

KEN WEAVER, MPSA (USA)

PID Color Water

Image No: 260

**2022 COACHELLA INTERNATIONAL EXHIBITION OF PHOTOGRAPHY
JOSHUA TREE JUDGING**



“ENERGETIC WIND”

JAMES M. WHITE (USA)

PID Color General

Image No: 261

**2022 COACHELLA INTERNATIONAL EXHIBITION OF PHOTOGRAPHY
JOSHUA TREE JUDGING**



“CALIFORNIA WAVE”

LARRY WHITE (USA)

PID Color Water

Image No: 262

**2022 COACHELLA INTERNATIONAL EXHIBITION OF PHOTOGRAPHY
JOSHUA TREE JUDGING**



HM

“VENTURA WAVE”

LARRY WHITE (USA)

PID Color Water

Image No: 263

**2022 COACHELLA INTERNATIONAL EXHIBITION OF PHOTOGRAPHY
JOSHUA TREE JUDGING**



“DEVIL'S POSTPILE AT NIGHT”

DAVID WILKINS (USA)

PID Color General

Image No: 264

**2022 COACHELLA INTERNATIONAL EXHIBITION OF PHOTOGRAPHY
JOSHUA TREE JUDGING**



"AWAITING MOONRISE"

RON WILLEMS (NEW ZEALAND)

PID Color General

Image No: 265

**2022 COACHELLA INTERNATIONAL EXHIBITION OF PHOTOGRAPHY
JOSHUA TREE JUDGING**



"DUST STORM VICTIM"

RON WILLEMS (NEW ZEALAND)

PID Color General

Image No: 266

**2022 COACHELLA INTERNATIONAL EXHIBITION OF PHOTOGRAPHY
JOSHUA TREE JUDGING**



“SAILING”

WAI YEE BENNY WONG (HONG KONG)

PID Color Water

Image No: 267

**2022 COACHELLA INTERNATIONAL EXHIBITION OF PHOTOGRAPHY
JOSHUA TREE JUDGING**



HM

"CUBA STREET25"

DANLEI YE, GMPSA/B, GPSA (CANADA)

PID Color General

Image No: 268

**2022 COACHELLA INTERNATIONAL EXHIBITION OF PHOTOGRAPHY
JOSHUA TREE JUDGING**

