

2021 COACHELLA INTERNATIONAL EXHIBITION OF PHOTOGRAPHY JOSHUA TREE JUDGING



2021 Coachella International Exhibition of Photography

OUR 14TH YEAR!

PID MONO CATALOG

JOSHUA TREE Judging

Sponsored by the Coachella Valley Desert Camera Club

Recognized by the Photographic Society of America

(PSA: 2021-1251)

IMPORTANT NOTE

**Download and save to local computer or mobile device
and open with Acrobat.**

**Use bookmarks on left and up/down arrow keys
to navigate through the Catalog.**

WEBSITE

<https://www.coachella-ex.org/>

2021 COACHELLA INTERNATIONAL EXHIBITION OF PHOTOGRAPHY JOSHUA TREE JUDGING



PID Mono Catalog

JOSHUA TREE Judging

EXHIBITION COMMITTEE

General Chair: Stuart Lynn, HonPSA, QPSA, HonS4C, DFS4C

Vice Chair: Jeanne Scott, AS4C

COPYRIGHT

All copyrights in all posted images accessible through this catalog remain vested with the original authors (makers) of these images. All use, copying, or republishing of any image without permission of the author is prohibited except for downloading these images directly from this document or website for purposes of viewing.

2021 COACHELLA INTERNATIONAL EXHIBITION OF PHOTOGRAPHY JOSHUA TREE JUDGING



2021 Coachella International Recognized by the Photographic Society of America

The sponsors of this International Exhibition of Photography have been awarded Recognition by PSA, the world's largest patron of international photographic exhibitions. PSA, although it has provided Recognition, is neither a sponsor nor directly involved in the operation of this exhibition.



Valid acceptances received by PSA Members in recognized sections of this exhibition are eligible for PSA Star Ratings, listing in the world-wide PSA Who's Who of Photography and credited towards the PSA Distinctions of QPSA, PPSA, EPSA, MPSA, MPSA2, GMPSA, GMPSA/B, GMPSA/S, GMPSA/G, and GMPSA/P.

PSA is a non-profit organization promoting the advancement of photography in all its forms to novice, amateur and professional photographers world wide.

For information on membership and the many services and activities of PSA contact:

psa

PHOTOGRAPHIC SOCIETY OF AMERICA
8241 S. Walker Avenue, Suite 104
Oklahoma City, OK 73139-9401, U.S.A.
E-mail: hq@psa-photo.org
Web Site: <http://www.psa-photo.org>

PSA: 2021-1251

2021 COACHELLA INTERNATIONAL EXHIBITION OF PHOTOGRAPHY

JOSHUA TREE JUDGING

General Chair: Stuart Lynn, HonPSA, QPSA, HonS4C, DFS4C
Vice Chair: Jeanne Scott, AS4C



JUDGES

BARBARA SCHMIDT, MPSA2, EFIAP/B, GPU CR4, GPU VIP-3, GPU ZEUS
JOANNE STOLTE, HONPSA, MPSA, EFIAP, ESFIAP
DAVID POEY CHER TAY, APSA, GMPSA, MFIAP, HONEFIAP

Image No.

SECTION 1 - PID MONO: GENERAL

PSA BEST OF SHOW GOLD	
TERRY MIRANDA (USA): "DEAR COVID"	177
CVDCC GOLD	
STEVEN FRIEDMAN (USA): "TWO HANDS"	80
CVDCC SILVER	
CHING CHING CHAN (HONG KONG): "WORKING HARD FOR FAMILY"	42
CVDCC SILVER	
ADRIAN LINES (ENGLAND): "KNITTING WITH ATTATURK"	151
CVDCC BRONZE	
CHING CHING CHAN (HONG KONG): "MY DAILY WORK"	41
CVDCC BRONZE	
LUC MAIRESSE (BELGIUM): "REFLEXIONS ABOUT THE PAST"	155
CVDCC BRONZE	
JR SCHNELZER (USA): "CONTEMPLATING THE RANCH"	206
JUDGE'S CHOICE	
CHAU KEI CHECKY LAM (HONG KONG): "EGRET LOVE"	142
JUDGE'S CHOICE	
WILLIAM LARUE (USA): "CARGO BOAT GLEN GEARY"	
JUDGE'S CHOICE	
RAVINDRA RANASINGHE (SRI LANKA): "TEA FOR ME"	

SECTION 2 - PID MONO: HUMAN-MADE OBJECTS

PSA BEST OF SHOW GOLD	
PAUL SPEAKER (USA): "VALVE AND GEAR TEETH AGSM-31B"	227
CVDCC GOLD	
CHAU KEI CHECKY LAM (HONG KONG): "DREAM HOME"	141
CVDCC SILVER	
ROBERT CHRISTMAN (USA): "HIGHWAY 66"	50
CVDCC SILVER	
DEE MCMILLAN (USA): "ANTIQUITIES ONE"	163
CVDCC BRONZE	
RICK GAUTHREAUX (USA): ""METAL PETALS""	89
CVDCC BRONZE	
JEFF MCDONALD (USA): "STURGEON BAY LIGHT OP 1637"	160
CVDCC BRONZE	
GABRIELE MEYERHOEFER (GERMANY): "AUTOBAHNKIRCHE"	171
JUDGE'S CHOICE	
WARD CONAWAY (USA): "ANTENNA GLOWING RED"	53
JUDGE'S CHOICE	
CHAU KEI CHECKY LAM (HONG KONG): "BUDDHA HOPE"	139
JUDGE'S CHOICE	
WITTA PRIESTER (USA): "DOLL VIEW BW"	191

2021 COACHELLA INTERNATIONAL EXHIBITION OF PHOTOGRAPHY

JOSHUA TREE JUDGING



PID MONO ACCEPTANCES INDEX

PMG = PID MONO GENERAL : PMT = PID MONO THEME



	Image No		Image No
BASSETT, DAVID (AUSTRALIA)			
PMT "BIKE RACK" .	12		
BEISHKE, JOHN (USA)			
PMT "RESTORING SALVATION MOUNTAIN 2" .	13	PMG "WHITE POPPIES 3" .	14
BENSON, PEGGY, PPSA (USA)			
PMG "ARCHES AND STAIRS" .	15	PMG "EMPORIO CHURCH" .	16
BINNEY, ADRIAN, QPSA (ENGLAND)			
PMG "IGUANA FROM COSTA RICA" .	17		
BOYD, CYRIL, EPSA (NORTHERN IRELAND)			
PMG "CARMEN" .	18	PMG "FIERCE LOOK" .	19
PMG "RUTA MOODY" HM.	20	PMG "SARAH" .	21
BURKE, BARBARA (USA)			
PMT "THE CASH REGISTER" .	22	PMG "TRUMPETS" .	23
BUTLER, GARY (USA)			
PMG "PHELPS BARN" .	24	PMG "WET MORNING IN CHICAGO" .	25
CARDER, NAN, FPSA, GMP SA (USA)			
PMT "GETTY 8805" .	26	PMG "HERON 8526" .	27
PMG "KIT FOX 7862" .	28	PMT "LA CO AIR SHOW 5089" HM.	29
PMG "PEACE LILY 7067" HM.	30		
CATANIA, GOTTFRIED, PPSA (MALTA)			
PMG "ANDREA 1" .	31	PMT "CANARY WHARF ESCALATORS" HM.	32
PMG "CITY OF ARTS AND SCIENCES 19" .	33	PMT "CURVES 2" .	34
PMT "TULIP STAIRCASE LONDON" .	35		
CHAN, BETTY (CANADA)			
PMT "APARTMENTS" .	36	PMG "BULL EYEBALLING THE CLOWN" .	37
PMG "FALLEN BULL RIDER" .	38	PMG "HORSES GRAZING" .	39
PMT "SPIRAL STAIRS 661" .	40		
CHAN, CHING CHING (HONG KONG)			
PMG "MY DAILY WORK" CVDCC Bronze.	41	PMG "WORKING HARD FOR FAMILY" CVDCC Silver.	42
CHEANG, SHERMAN (MACAU)			
PMG "TANGO" .	43		
CHENG, HONG WAI VICTOR, EPSA, SP SA (HONG KONG)			
PMG "OLD MAN 2" HM.	44	PMG "VIETNAM LIFE 6" HM.	45
CHEUK, SHU, GMP SA/B (USA)			
PMG "GATOR 2019 BAR" .	46	PMT "ST LOUIS ABBEY BLUE" .	47
CHIU, BOB, MP SA2, GP SA (USA)			
PMG "LIFE IN MOROCCO10" .	48		

(may be continued on next page)

2021 COACHELLA INTERNATIONAL EXHIBITION OF PHOTOGRAPHY

JOSHUA TREE JUDGING



PID MONO ACCEPTANCES INDEX

PMG = PID MONO GENERAL : PMT = PID MONO THEME



Image No

Image No

CHRISTMAN, ROBERT (USA)

PMG "CEMETERY COUPLE II" .	49	PMT "HIGHWAY 66" CVDCC Silver.	50
PMT "INTERNATIONAL PICKUP" .	51	PMG "MADAME MORTE II" .	52

CONAWAY, WARD, MPSA (USA)

PMT "ANTENNA GLOWING RED" Judge's Choice.	53	PMG "MARSHALL POINT LIGHTHOUSE WALKWAY" .	54
PMT "OLD PUEBLO" .	55	PMT "W QUODDY LIGHTHOUSE" .	56

DAVIS, BRIAN, MPSA (ENGLAND)

PMG "GOING DOWN" .	57	PMT "ME AND MY SHADOW" .	58
PMG "VENETIAN CARNIVAL MASKED ENTRANT" .	59		

DAVIS, SHIRLEY, EPSA (ENGLAND)

PMG "HEMISPHERIC" .	60	PMG "SHOULDER TO SHOULDER" .	61
---------------------	----	------------------------------	----

DEDONATO, DONALD, EPSA (USA)

PMT "BRUSSELS ATOMIUM" .	62	PMG "FEROCIOUS SNOW LEOPARD" .	63
PMT "FOREMAN PAVILION" .	64	PMG "NICE QUILLS" .	65
PMT "PONTE VECCHIO" .	66	PMG "RED-TAILED HAWK" HM.	67
PMG "STATELY BALD EAGLE" .	68	PMT "THE SEATTLE SPACE NEEDLE" .	69

DI PANFILO, VINCENZO (ITALY)

PMG "BIKER ON THE ROAD" .	70	PMG "WARRIORS HILL" .	71
---------------------------	----	-----------------------	----

DICKERSON, TERRY, PPSA (USA)

PMG "EXIT HERE" .	72		
-------------------	----	--	--

ENGLISH, DIANNE, PPSA (AUSTRALIA)

PMG "GRACEFUL COLUMBINE" .	73	PMG "STOP RAINING PLEASE" .	74
PMG "VINTAGE" .	75		

FISCHER, JIE, EPSA (USA)

PMG "DRINK WATER" .	76	PMG "GRANNY" .	77
---------------------	----	----------------	----

FRIEDMAN, STEVEN (USA)

PMG "MILKY WAY RISING OVER BOOT ARCH 2" .	78	PMT "MINEHEAD HOIST" .	79
PMG "TWO HANDS" CVDCC Gold.	80		

GAUL, VIKI, APSA, PPSA (CANADA)

PMG "BABY JAY 5576" .	81	PMT "BALLOON WITH FLAG DISPLAY" .	82
PMG "BEAR APPROACHING 1549" .	83	PMT "COLFAX BARN 6550" HM.	84
PMG "EGRET ALMOST HOME 2269" .	85	PMT "FOGGY DAY 6038" .	86
PMG "JAY WATCHING 8182" .	87		

GAUTHREAUX, RICK (USA)

PMT "DC-3" .	88	PMT "METAL PETALS" CVDCC Bronze.	89
PMT "SEND IN THE PAWNS" .	90		

GODDARD, JOAN (USA)

PMG "CONTRASTING TEXTURES IN FASHION" .	91	PMG "MAUI SENTINEL" .	92
---	----	-----------------------	----

(may be continued on next page)

2021 COACHELLA INTERNATIONAL EXHIBITION OF PHOTOGRAPHY

JOSHUA TREE JUDGING



PID MONO ACCEPTANCES INDEX

PMG = PID MONO GENERAL : PMT = PID MONO THEME



	Image No		Image No
PMG "MORMON TABERNACLE SAN DIEGO" .	93		
GOLDIN, LEONID (ISRAEL)			
PMG "HAND IN HAND" .	94	PMG "SPECIAL DIET" .	95
HABRINGER, WOLFGANG (AUSTRIA)			
PMT "ALTES SCHLOSS 73" .	96	PMT "CLOSED 10" .	97
PMG "SCHLOSS ORTH 06" .	98	PMG "SOLITUDE 17" HM .	99
PMG "THE WAY DOWN 23" .	100		
HADFIELD, CHRISTINE (ENGLAND)			
PMG "WHISPER WHISPER" .	101	PMG "ZEBRA DISAGREEMENT" .	102
HAGAN, JIM (USA)			
PMG "SOLOMON TEMPLE" .	103	PMT "WHEELS AND GEARS" .	104
HANISCH, RALF, MPSA (GERMANY)			
PMG "ELEFANTENSCHUTZ" HM .	105	PMG "FLIC FLAC, WITH A SMILE" .	106
PMG "WALKING BY MYSELF" .	107		
HERMANSEN, MOGENS (USA)			
PMG "LATE AFTERNOON JOY" .	108	PMG "MORNING FOG AT THE BEACH" .	109
HO, HUNG (USA)			
PMG "SPIRAL 8" .	110		
HOLLIDAY, ELAINE (AUSTRALIA)			
PMG "ALONE AND ABANDONED" .	111	PMG "CHASING WINDOWS" .	112
PMT "CHEVROLET 20" .	113	PMT "CURVING AT QVB" .	114
PMG "QVB CURVES" .	115	PMT "SHOES" .	116
HORNBOSTEL, HANS-PETER, PPSA (GERMANY)			
PMG "BRAHMSKONTOR TAKE2" HM .	117	PMG "DOCKLAND TAKE2" .	118
HSIONG, YOUMANS, PPSA (USA)			
PMG "TIBETAN GIRL READING" .	119		
HUTCHISON, GEORGE, QPSA (USA)			
PMG "GRANDFATHERS WATCH" .	120	PMT "SUPERCHARGED" .	121
KENNEDY, FRANCIS, EPSA (AUSTRALIA)			
PMG "OVER HILL TOP JUMP" .	122		
KING, FRANCIS, GMP SA (CANADA)			
PMT "GREAT WALL IN RAIN" .	123	PMT "PALACE UNDER GLOOMY SKY" .	124
PMG "TAKING A SHORTCUT 103" .	125	PMG "WAITING FOR CHANCE" .	126
PMG "YUMMY" .	127		
KLEINDIENST, VALERIE (AUSTRALIA)			
PMG "ANIMALS DRINKING" .	128	PMG "CAT ON CAR" .	129
PMT "INTERIOR ST SAVA" .	130		

(may be continued on next page)

2021 COACHELLA INTERNATIONAL EXHIBITION OF PHOTOGRAPHY

JOSHUA TREE JUDGING



PID MONO ACCEPTANCES INDEX

PMG = PID MONO GENERAL : PMT = PID MONO THEME



Image No

Image No

KRAMER, IRENE, EPSA (USA)

PMT "GLOWING GLASSWARE" .

131

PMT "ST LOUIS PRIORY" .

132

PMG "SYMMETRY" .

133

KUEBLER, BARBARA, APSA, MPSA (USA)

PMG "SPACE TRAVELER" .

134

KWAN, PHILLIP, GMPA/G, GPSA (CANADA)

PMG "GREAT GRAY OWL 62" .

135

PMG "HORSES IN WATER 88" .

136

PMG "NONNI2 11" .

137

PMG "HORSE ROUND UP 32" .

138

LAM, CHAU KEI CHECKY (HONG KONG)

PMT "BUDDHA HOPE" Judge's Choice.

139

PMG "DREAM GIRL" .

140

PMT "DREAM HOME" CVDCC Gold.

141

PMG "EGRET LOVE" Judge's Choice.

142

PMG "JUMPING OVER FIRE" .

143

PMT "THE GREAT WALL MORNING" .

144

LAM, JILL (CANADA)

PMG "FISH PORT IN PEGGY COVE" .

145

LAM, TAT CHUEN (CHINA)

PMG "CAMEL JOURNEY" .

146

PMG "WEAVING" .

147

LARRY, JOHN (ENGLAND)

PMG "STORM AT ST ALDHELMS CHAPEL" .

148

LARUE, WILLIAM (USA)

PMG "CORAL AT ALABAMA HILLS" .

149

LINES, ADRIAN (ENGLAND)

PMG "CHESS" .

150

PMG "KNITTING WITH ATTATURK" CVDCC Silver.

151

PMG "MAN AND DOG" .

152

MAIL, MARKHAM (NEW ZEALAND)

PMG "PREPARED FOR THE PANDEMIC" .

153

MAIRESSE, LUC, MPSA, SPSA (BELGIUM)

PMG "IN THE HANDS OF LOVE" .

154

PMG "REFLEXIONS ABOUT THE PAST" CVDCC Bronze.

MCDONALD, JEFF, QPSA (USA)

PMG "ANTELOPE CANYON STUDY 1920" .

156

PMT "BRISE SOLEIL WITH CLOUDS OP 1376" HM.

157

PMT "MANISTEE LIGHT OP 1877" .

158

PMG "OAK IN HOAR FROST STUDY 1930" HM.

159

PMT "STURGEON BAY LIGHT OP 1637" CVDCC Bronze.

160

PMG "TOUCH THE SKY OP 1536" HM.

161

PMG "YEI BI CHEI AND TOTEM" HM.

162

MCMILLAN, DEE (USA)

PMT "ANTIQUITIES ONE" CVDCC Silver.

163

PMG "CLEMATIS 12" HM.

164

PMT "OIL CANS ONE" .

165

PMT "PAVILLION ONE SPOKANE" .

166

MEINBERG, VOLKER, GMPA/S (GERMANY)

PMG "HELGOLAND GANNETS 2021" .

167

PMG "SIBIRIAN ISLANDS 15" .

168

PMG "THE PALOUSE 07" .

169

(may be continued on next page)

2021 COACHELLA INTERNATIONAL EXHIBITION OF PHOTOGRAPHY

JOSHUA TREE JUDGING



PID MONO ACCEPTANCES INDEX

PMG = PID MONO GENERAL : PMT = PID MONO THEME



Image No

Image No

MEYERHOFER, GABRIELE, QPSA (GERMANY)

PMT "ATOMIUM BW" .	170
PMG "EMERGENCY EXIT" .	172
PMT "FREUDENBERG 01" HM.	174
PMG "WAITING FOR NICE WEATHER" .	176

PMT "AUTOBAHNKIRCHE" CVDDC Bronze.	171
PMT "FJORDHAUS" .	173
PMG "GOTHAM" HM.	175

MIRANDA, TERRY (USA)

PMG "DEAR COVID" PSA Best of Show Gold.	177
--	-----

PMG "FORGOTTEN TRAIN" .	178
-------------------------	-----

MORITZ, VICKI, GMPA (AUSTRALIA)

PMT "SOUTH MELBOURNE ARCHITECTURE" HM.	179
---	-----

NUGENT, PEGGY (USA)

PMG "HOW FEAR CAME" .	180
-----------------------	-----

PARKER, CRAIG, MPAA, BPSA (AUSTRALIA)

PMG "FROG BY THE THROAT" .	181
PMG "WEAVER NEST CONSTRUCTION 04" .	183

PMG "OXPECKER STARING AT BUFFALO" .	182
-------------------------------------	-----

PASSUELLO, ELIZABETH, EPSA (NEW ZEALAND)

PMG "SOFT KITTY" .	184
--------------------	-----

POGGIONI, ANGELA, PPSA (USA)

PMG "GRIZZLY EVENING DIP" .	185
-----------------------------	-----

PMG "IT'S ALWAYS LUNCH TIME FOR GRIZZLY" .	186
--	-----

PONTI-SGARGI, JUDITH (CANADA)

PMG "CORN REVEALED" HM.	187
PMG "LUKE" .	189

PMG "EGG AND FEATHERS" HM.	188
-----------------------------------	-----

POWERS, JAMES (USA)

PMG "ON PIGEON RIDGE" .	190
-------------------------	-----

PRIESTER, WITTA (USA)

PMT "DOLL VIEW BW" Judge's Choice.	191
PMG "JAPANESE MAPLE IN PORTLAND -BW" .	193
PMT "PAPER ROLLS 2 BW" .	195

PMG "HALLWAY IN 5 PARTS BW" .	192
PMG "PALOUSE BARN IR" .	194

PUSTELNIK, BIRGIT, PPSA (GERMANY)

PMG "DARKNESS AND LIGHT" .	196
PMG "KEYHOLE" .	198

PMG "HARP" .	197
PMG "SING IT" .	199

RANASINGHE, RAVINDRA (SRI LANKA)

PMG "HAPPY HEARTS" .	200
----------------------	-----

PMG "THE COCONUT BREAKING RITUAL" .	201
-------------------------------------	-----

RIEHLE, GUNTHER, APSA, GMPA/P (GERMANY)

PMG "BREITLING S7" .	202
PMG "STUTTGART LIBRARY 12" .	204

PMG "ELEPHANT SEAL PUP ON BEACH HI 102" .	203
---	-----

ROSENGREN, ERIK, FPSA, PPSA (USA)

PMG "WIND SWEPT COAST-OREGON" .	205
---------------------------------	-----

(may be continued on next page)

2021 COACHELLA INTERNATIONAL EXHIBITION OF PHOTOGRAPHY

JOSHUA TREE JUDGING



PID MONO ACCEPTANCES INDEX

PMG = PID MONO GENERAL : PMT = PID MONO THEME



Image No

Image No

SCHNELZER, JR, FPSA, MPSA (USA)

PMG "CONTEMPLATING THE RANCH" **CVDCC Bronze.** 206
PMG "SWEPT AWAY" . 208

PMT "STRANGE BUILDING" . 207
PMG "WALK DOWN DARK HEDGES" . 209

SCHWEDEN, WOLFGANG, GMPA/S (GERMANY)

PMT "BLAUE STUNDE" . 210
PMG "RUNNER IN SUNSET 1" . 212

PMG "GAEHN" . 211

SHACKELFORD, SCOTT (USA)

PMG "LONE LEANING SNOW JOSHUA" . 213

PMT "STEAM ENGINE NUMBER 90 UP CLOSE" . 214

SINHA, BARUN (INDIA)

PMG "BKS_4099 B" . 215
PMT "THE ETERNAL WAIT" . 217

PMG "BKS_4101" . 216

SPEAKER, NANCY, QPSA (USA)

PMT "FESTIVAL OF LIGHTS" . 218
PMG "HOLLY 79" **HM.** 220
PMG "SNOW QUEEN" . 222

PMT "GOLD RECORDS NASHVILLE" . 219
PMG "SEATTLE" . 221
PMG "STRIPE" . 223

SPEAKER, PAUL, PPSA (USA)

PMG "FIRE ENGINE GAUGE-07B ALT" . 224
PMT "SCRM ENGINE DRIVER DETAIL-05B" **HM.** 226

PMT "MCDONALD OBSERVATORY-02B" . 225
PMT "VALVE AND GEAR TEETH AGSM-31B" **PSA Best of Show**

STILL, WILLIAM, EPSA (USA)

PMG "KANSAS WHEATFIELD 882" . 228

PMT "WORN" . 229

TAN, LEE ENG, PPSA (SINGAPORE)

PMG "GHOST BRIDE 1" . 230

PMG "PRAVEENA 3" . 231

TANKE, DIAHANN (USA)

PMG "FIRST SNOW" . 232

TODD-LARSON, CAROLYN, QPSA (USA)

PMT "RUSTIC CANS" . 233

PMG "THE HOUSE THAT JERRY BUILT DALLAS" . 234

TOUSSIMIS, DIMITRIS, PPSA (GREECE)

PMG "RIO BRIDGE" . 235

VAUTRIN, INGE, PPSA (USA)

PMG "SOUTHWESTERN FACADE" . 236

WAT, JAMES (USA)

PMG "ANCIENT SWEDISH FARMERS HUT" . 237

WELLER, CLAUDIA, PPSA, AFIAP (GERMANY)

PMG "TREPPENLICHT" . 238

WHITE, LARRY (USA)

PMG "DISNEY HALL LINES AND SHAPES" . 239

PMT "OLD DESOTO" . 240

(may be continued on next page)

2021 COACHELLA INTERNATIONAL EXHIBITION OF PHOTOGRAPHY JOSHUA TREE JUDGING



PID MONO ACCEPTANCES INDEX

PMG = PID MONO GENERAL : PMT = PID MONO THEME



Image No

Image No

WILKINS, DAVID (USA)

PMG "THE MARINER 5949" . 241

WONG, YUET YEE, EPSA (HONG KONG)

PMG "A DEVOUT NATION" . 242

PMG "FIGHT FOR SPACE" **HM.** 243

WOODINGTON, ANNE (GUERNSEY)

PMG "BLUE SWALLOW MOTEL" . 244

PMG "FISHING IN THE MIST" . 245

PMG "OLD AND FORGOTTEN" . 246

PMG "STORMY CLOUDS" **HM.** 247

YE, DANLEI, GMPSA, GPSA (CANADA)

PMG "THE JEWISH COMMUNITY19" . 248

ZHANG, JIANMIN (CHINA)

PMG "SALIVATING" . 249

PMG "TO FEEL ATTACHMENT TO SOMEONE" **HM.** 250

ZHAO, OUFEI (CHINA)

PMG "WIND" . 251

(may be continued on next page)

2021 COACHELLA INTERNATIONAL EXHIBITION OF PHOTOGRAPHY
JOSHUA TREE JUDGING



“BIKE RACK”

DAVID BASSETT (AUSTRALIA)

PID Mono Human-Made Objects

Image No: 12

2021 COACHELLA INTERNATIONAL EXHIBITION OF PHOTOGRAPHY
JOSHUA TREE JUDGING



"RESTORING SALVATION MOUNTAIN 2"

JOHN BEISHKE (USA)

PID Mono Human-Made Objects

Image No: 13

**2021 COACHELLA INTERNATIONAL EXHIBITION OF PHOTOGRAPHY
JOSHUA TREE JUDGING**



"WHITE POPPIES 3"

JOHN BEISHKE (USA)

PID Mono General

Image No: 14

**2021 COACHELLA INTERNATIONAL EXHIBITION OF PHOTOGRAPHY
JOSHUA TREE JUDGING**



“ARCHES AND STAIRS”

PEGGY BENSON, PPSA (USA)

PID Mono General

Image No: 15

2021 COACHELLA INTERNATIONAL EXHIBITION OF PHOTOGRAPHY
JOSHUA TREE JUDGING



“EMPORIO CHURCH”

PEGGY BENSON, PPSA (USA)

PID Mono General

Image No: 16

**2021 COACHELLA INTERNATIONAL EXHIBITION OF PHOTOGRAPHY
JOSHUA TREE JUDGING**



"IGUANA FROM COSTA RICA"

ADRIAN BINNEY, QPSA (ENGLAND)

PID Mono General

Image No: 17

2021 COACHELLA INTERNATIONAL EXHIBITION OF PHOTOGRAPHY
JOSHUA TREE JUDGING



"CARMEN"

CYRIL BOYD, EPSA (NORTHERN IRELAND)

PID Mono General

Image No: 18

**2021 COACHELLA INTERNATIONAL EXHIBITION OF PHOTOGRAPHY
JOSHUA TREE JUDGING**



“FIERCE LOOK”

CYRIL BOYD, EPSA (NORTHERN IRELAND)

PID Mono General

Image No: 19

2021 COACHELLA INTERNATIONAL EXHIBITION OF PHOTOGRAPHY
JOSHUA TREE JUDGING



HM

“RUTA MOODY”

CYRIL BOYD, EPSA (NORTHERN IRELAND)

PID Mono General

Image No: 20

**2021 COACHELLA INTERNATIONAL EXHIBITION OF PHOTOGRAPHY
JOSHUA TREE JUDGING**



"SARAH"

CYRIL BOYD, EPSA (NORTHERN IRELAND)

PID Mono General

Image No: 21

2021 COACHELLA INTERNATIONAL EXHIBITION OF PHOTOGRAPHY
JOSHUA TREE JUDGING



"THE CASH REGISTER"

BARBARA BURKE (USA)

PID Mono Human-Made Objects

Image No: 22

2021 COACHELLA INTERNATIONAL EXHIBITION OF PHOTOGRAPHY
JOSHUA TREE JUDGING



“TRUMPETS”

BARBARA BURKE (USA)

PID Mono General

Image No: 23

2021 COACHELLA INTERNATIONAL EXHIBITION OF PHOTOGRAPHY
JOSHUA TREE JUDGING



"PHELPS BARN"

GARY BUTLER (USA)

PID Mono General

Image No: 24

**2021 COACHELLA INTERNATIONAL EXHIBITION OF PHOTOGRAPHY
JOSHUA TREE JUDGING**



“WET MORNING IN CHICAGO”

GARY BUTLER (USA)

PID Mono General

Image No: 25

**2021 COACHELLA INTERNATIONAL EXHIBITION OF PHOTOGRAPHY
JOSHUA TREE JUDGING**



“GETTY 8805”

NAN CARDER, FPSA, GMPA (USA)

PID Mono Human-Made Objects

Image No: 26

**2021 COACHELLA INTERNATIONAL EXHIBITION OF PHOTOGRAPHY
JOSHUA TREE JUDGING**



"HERON 8526"

NAN CARDER, FPSA, GMPA (USA)

PID Mono General

Image No: 27

**2021 COACHELLA INTERNATIONAL EXHIBITION OF PHOTOGRAPHY
JOSHUA TREE JUDGING**



"KIT FOX 7862"

NAN CARDER, FPSA, GMPA (USA)

PID Mono General

Image No: 28

2021 COACHELLA INTERNATIONAL EXHIBITION OF PHOTOGRAPHY
JOSHUA TREE JUDGING



HM

“LA CO AIR SHOW 5089”

NAN CARDER, FPSA, GMPA (USA)

PID Mono Human-Made Objects

Image No: 29

2021 COACHELLA INTERNATIONAL EXHIBITION OF PHOTOGRAPHY
JOSHUA TREE JUDGING



HM

“PEACE LILY 7067”

NAN CARDER, FPSA, GMPA (USA)

PID Mono General

Image No: 30

**2021 COACHELLA INTERNATIONAL EXHIBITION OF PHOTOGRAPHY
JOSHUA TREE JUDGING**



“ANDREA 1”

GOTTFRIED CATANIA, PPSA (MALTA)

PID Mono General

Image No: 31

2021 COACHELLA INTERNATIONAL EXHIBITION OF PHOTOGRAPHY
JOSHUA TREE JUDGING



HM

“CANARY WHARF ESCALATORS”

GOTTFRIED CATANIA, PPSA (MALTA)

PID Mono Human-Made Objects

Image No: 32

**2021 COACHELLA INTERNATIONAL EXHIBITION OF PHOTOGRAPHY
JOSHUA TREE JUDGING**



“CITY OF ARTS AND SCIENCES 19”

GOTTFRIED CATANIA, PPSA (MALTA)

PID Mono General

Image No: 33

**2021 COACHELLA INTERNATIONAL EXHIBITION OF PHOTOGRAPHY
JOSHUA TREE JUDGING**



“CURVES 2”

GOTTFRIED CATANIA, PPSA (MALTA)

PID Mono Human-Made Objects

Image No: 34

2021 COACHELLA INTERNATIONAL EXHIBITION OF PHOTOGRAPHY
JOSHUA TREE JUDGING



“TULIP STAIRCASE LONDON”

GOTTFRIED CATANIA, PPSA (MALTA)

PID Mono Human-Made Objects

Image No: 35

2021 COACHELLA INTERNATIONAL EXHIBITION OF PHOTOGRAPHY
JOSHUA TREE JUDGING



“APARTMENTS”

BETTY CHAN (CANADA)

PID Mono Human-Made Objects

Image No: 36

2021 COACHELLA INTERNATIONAL EXHIBITION OF PHOTOGRAPHY
JOSHUA TREE JUDGING



"BULL EYEBALLING THE CLOWN"

BETTY CHAN (CANADA)

PID Mono General

Image No: 37

**2021 COACHELLA INTERNATIONAL EXHIBITION OF PHOTOGRAPHY
JOSHUA TREE JUDGING**



“FALLEN BULL RIDER”

BETTY CHAN (CANADA)

PID Mono General

Image No: 38

**2021 COACHELLA INTERNATIONAL EXHIBITION OF PHOTOGRAPHY
JOSHUA TREE JUDGING**



"HORSES GRAZING"

BETTY CHAN (CANADA)

PID Mono General

Image No: 39

**2021 COACHELLA INTERNATIONAL EXHIBITION OF PHOTOGRAPHY
JOSHUA TREE JUDGING**



“SPIRAL STAIRS 661”

BETTY CHAN (CANADA)

PID Mono Human-Made Objects

Image No: 40

2021 COACHELLA INTERNATIONAL EXHIBITION OF PHOTOGRAPHY
JOSHUA TREE JUDGING



CVDCC Bronze

"MY DAILY WORK"

CHING CHING CHAN (HONG KONG)

PID Mono General

Image No: 41

2021 COACHELLA INTERNATIONAL EXHIBITION OF PHOTOGRAPHY
JOSHUA TREE JUDGING



CVDCC Silver

“WORKING HARD FOR FAMILY”

CHING CHING CHAN (HONG KONG)

PID Mono General

Image No: 42

2021 COACHELLA INTERNATIONAL EXHIBITION OF PHOTOGRAPHY
JOSHUA TREE JUDGING



“TANGO”

SHERMAN CHEANG (MACAU)

PID Mono General

Image No: 43

**2021 COACHELLA INTERNATIONAL EXHIBITION OF PHOTOGRAPHY
JOSHUA TREE JUDGING**



HM

“OLD MAN 2”

HONG WAI VICTOR CHENG, EPSA, SPSA (HONG KONG)

PID Mono General

Image No: 44

**2021 COACHELLA INTERNATIONAL EXHIBITION OF PHOTOGRAPHY
JOSHUA TREE JUDGING**



HM

“VIETNAM LIFE 6”

HONG WAI VICTOR CHENG, EPSA, SPSA (HONG KONG)

PID Mono General

Image No: 45

2021 COACHELLA INTERNATIONAL EXHIBITION OF PHOTOGRAPHY
JOSHUA TREE JUDGING



“GATOR 2019 BAR”

SHU CHEUK, GMPSA/B (USA)

PID Mono General

Image No: 46

2021 COACHELLA INTERNATIONAL EXHIBITION OF PHOTOGRAPHY
JOSHUA TREE JUDGING



“ST LOUIS ABBEY BLUE”

SHU CHEUK, GMPSA/B (USA)

PID Mono Human-Made Objects

Image No: 47

2021 COACHELLA INTERNATIONAL EXHIBITION OF PHOTOGRAPHY
JOSHUA TREE JUDGING



“LIFE IN MOROCCO10”

BOB CHIU, MPSA2, GPSA (USA)

PID Mono General

Image No: 48

**2021 COACHELLA INTERNATIONAL EXHIBITION OF PHOTOGRAPHY
JOSHUA TREE JUDGING**



“CEMETERY COUPLE II”

ROBERT CHRISTMAN (USA)

PID Mono General

Image No: 49

2021 COACHELLA INTERNATIONAL EXHIBITION OF PHOTOGRAPHY
JOSHUA TREE JUDGING



CVDCC Silver

"HIGHWAY 66"

ROBERT CHRISTMAN (USA)

PID Mono Human-Made Objects

Image No: 50

**2021 COACHELLA INTERNATIONAL EXHIBITION OF PHOTOGRAPHY
JOSHUA TREE JUDGING**



“INTERNATIONAL PICKUP”

ROBERT CHRISTMAN (USA)

PID Mono Human-Made Objects

Image No: 51

2021 COACHELLA INTERNATIONAL EXHIBITION OF PHOTOGRAPHY
JOSHUA TREE JUDGING



"MADAME MORTE II"

ROBERT CHRISTMAN (USA)

PID Mono General

Image No: 52

**2021 COACHELLA INTERNATIONAL EXHIBITION OF PHOTOGRAPHY
JOSHUA TREE JUDGING**



Judge's Choice

"ANTENNA GLOWING RED"

WARD CONAWAY, MPSA (USA)

PID Mono Human-Made Objects

Image No: 53

**2021 COACHELLA INTERNATIONAL EXHIBITION OF PHOTOGRAPHY
JOSHUA TREE JUDGING**



“MARSHALL POINT LIGHTHOUSE WALKWAY”

WARD CONAWAY, MPSA (USA)

PID Mono General

Image No: 54

**2021 COACHELLA INTERNATIONAL EXHIBITION OF PHOTOGRAPHY
JOSHUA TREE JUDGING**



“OLD PUEBLO”

WARD CONAWAY, MPSA (USA)

PID Mono Human-Made Objects

Image No: 55

**2021 COACHELLA INTERNATIONAL EXHIBITION OF PHOTOGRAPHY
JOSHUA TREE JUDGING**



“W QUODDY LIGHTHOUSE”

WARD CONAWAY, MPSA (USA)

PID Mono Human-Made Objects

Image No: 56

2021 COACHELLA INTERNATIONAL EXHIBITION OF PHOTOGRAPHY
JOSHUA TREE JUDGING



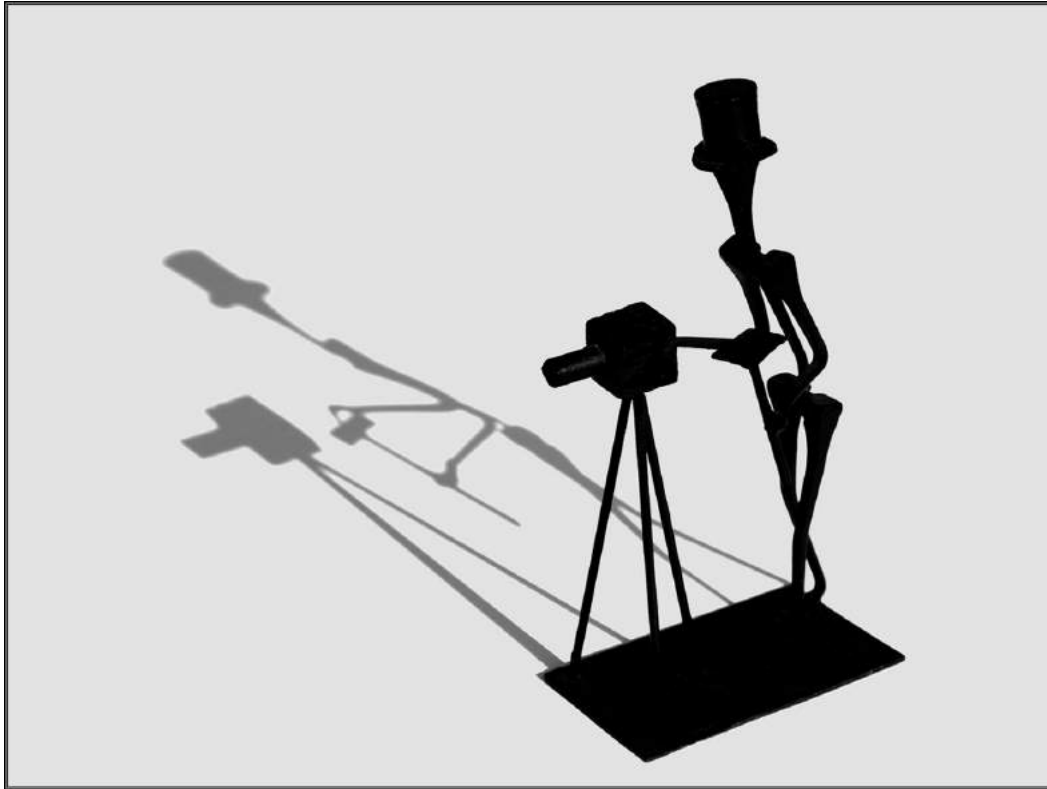
“GOING DOWN”

BRIAN DAVIS, MPSA (ENGLAND)

PID Mono General

Image No: 57

**2021 COACHELLA INTERNATIONAL EXHIBITION OF PHOTOGRAPHY
JOSHUA TREE JUDGING**



"ME AND MY SHADOW"

BRIAN DAVIS, MPSA (ENGLAND)

PID Mono Human-Made Objects

Image No: 58

2021 COACHELLA INTERNATIONAL EXHIBITION OF PHOTOGRAPHY
JOSHUA TREE JUDGING



“VENETIAN CARNIVAL MASKED ENTRANT”

BRIAN DAVIS, MPSA (ENGLAND)

PID Mono General

Image No: 59

**2021 COACHELLA INTERNATIONAL EXHIBITION OF PHOTOGRAPHY
JOSHUA TREE JUDGING**



“HEMISPHERIC”

SHIRLEY DAVIS, EPSA (ENGLAND)

PID Mono General

Image No: 60

2021 COACHELLA INTERNATIONAL EXHIBITION OF PHOTOGRAPHY
JOSHUA TREE JUDGING



“SHOULDER TO SHOULDER”

SHIRLEY DAVIS, EPSA (ENGLAND)

PID Mono General

Image No: 61

**2021 COACHELLA INTERNATIONAL EXHIBITION OF PHOTOGRAPHY
JOSHUA TREE JUDGING**



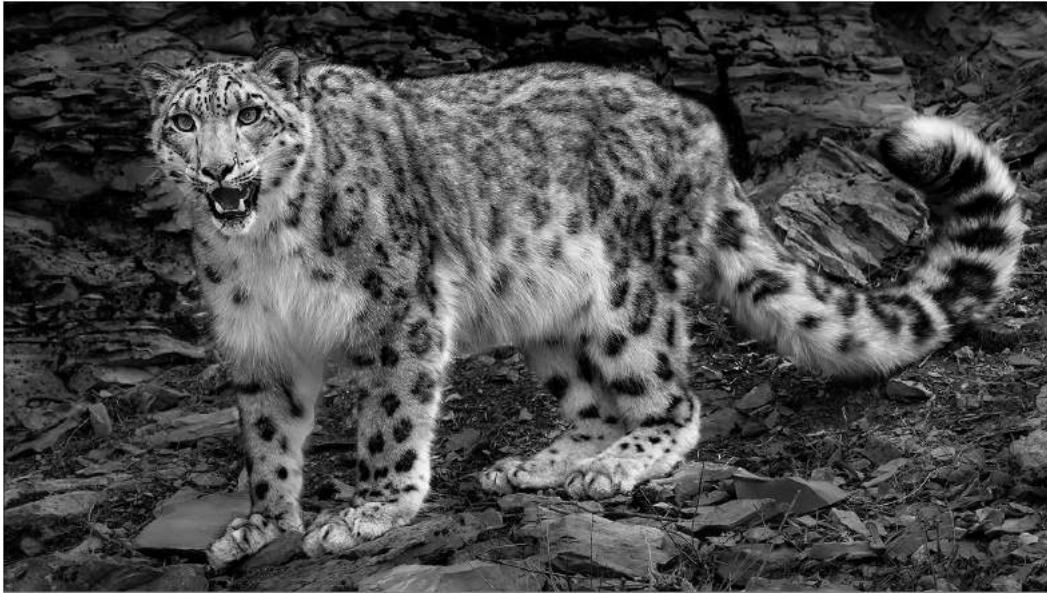
“BRUSSELS ATOMIUM”

DONALD DEDONATO, EPSA (USA)

PID Mono Human-Made Objects

Image No: 62

**2021 COACHELLA INTERNATIONAL EXHIBITION OF PHOTOGRAPHY
JOSHUA TREE JUDGING**



“FEROCIOUS SNOW LEOPARD”

DONALD DEDONATO, EPSA (USA)

PID Mono General

Image No: 63

**2021 COACHELLA INTERNATIONAL EXHIBITION OF PHOTOGRAPHY
JOSHUA TREE JUDGING**



“FOREMAN PAVILION”

DONALD DEDONATO, EPSA (USA)

PID Mono Human-Made Objects

Image No: 64

**2021 COACHELLA INTERNATIONAL EXHIBITION OF PHOTOGRAPHY
JOSHUA TREE JUDGING**



"NICE QUILLS"

DONALD DEDONATO, EPSA (USA)

PID Mono General

Image No: 65

2021 COACHELLA INTERNATIONAL EXHIBITION OF PHOTOGRAPHY
JOSHUA TREE JUDGING



“PONTE VECCHIO”

DONALD DEDONATO, EPSA (USA)

PID Mono Human-Made Objects

Image No: 66

**2021 COACHELLA INTERNATIONAL EXHIBITION OF PHOTOGRAPHY
JOSHUA TREE JUDGING**



HM

“RED-TAILED HAWK”

DONALD DEDONATO, EPSA (USA)

PID Mono General

Image No: 67

**2021 COACHELLA INTERNATIONAL EXHIBITION OF PHOTOGRAPHY
JOSHUA TREE JUDGING**



“STATELY BALD EAGLE”

DONALD DEDONATO, EPSA (USA)

PID Mono General

Image No: 68

**2021 COACHELLA INTERNATIONAL EXHIBITION OF PHOTOGRAPHY
JOSHUA TREE JUDGING**



“THE SEATTLE SPACE NEEDLE”

DONALD DEDONATO, EPSA (USA)

PID Mono Human-Made Objects

Image No: 69

**2021 COACHELLA INTERNATIONAL EXHIBITION OF PHOTOGRAPHY
JOSHUA TREE JUDGING**



“BIKER ON THE ROAD”

VINCENZO DI PANFILO (ITALY)

PID Mono General

Image No: 70

**2021 COACHELLA INTERNATIONAL EXHIBITION OF PHOTOGRAPHY
JOSHUA TREE JUDGING**



“WARRIORS HILL”

VINCENZO DI PANFILO (ITALY)

PID Mono General

Image No: 71

**2021 COACHELLA INTERNATIONAL EXHIBITION OF PHOTOGRAPHY
JOSHUA TREE JUDGING**



"EXIT HERE"

TERRY DICKERSON, PPSA (USA)

PID Mono General

Image No: 72

**2021 COACHELLA INTERNATIONAL EXHIBITION OF PHOTOGRAPHY
JOSHUA TREE JUDGING**



“GRACEFUL COLUMBINE”

DIANNE ENGLISH, PPSA (AUSTRALIA)

PID Mono General

Image No: 73

**2021 COACHELLA INTERNATIONAL EXHIBITION OF PHOTOGRAPHY
JOSHUA TREE JUDGING**



"STOP RAINING PLEASE"

DIANNE ENGLISH, PPSA (AUSTRALIA)

PID Mono General

Image No: 74

**2021 COACHELLA INTERNATIONAL EXHIBITION OF PHOTOGRAPHY
JOSHUA TREE JUDGING**



"VINTAGE"

DIANNE ENGLISH, PPSA (AUSTRALIA)

PID Mono General

Image No: 75

2021 COACHELLA INTERNATIONAL EXHIBITION OF PHOTOGRAPHY
JOSHUA TREE JUDGING



“DRINK WATER”

JIE FISCHER, EPSA (USA)

PID Mono General

Image No: 76

2021 COACHELLA INTERNATIONAL EXHIBITION OF PHOTOGRAPHY
JOSHUA TREE JUDGING



"GRANNY"

JIE FISCHER, EPSA (USA)

PID Mono General

Image No: 77

**2021 COACHELLA INTERNATIONAL EXHIBITION OF PHOTOGRAPHY
JOSHUA TREE JUDGING**



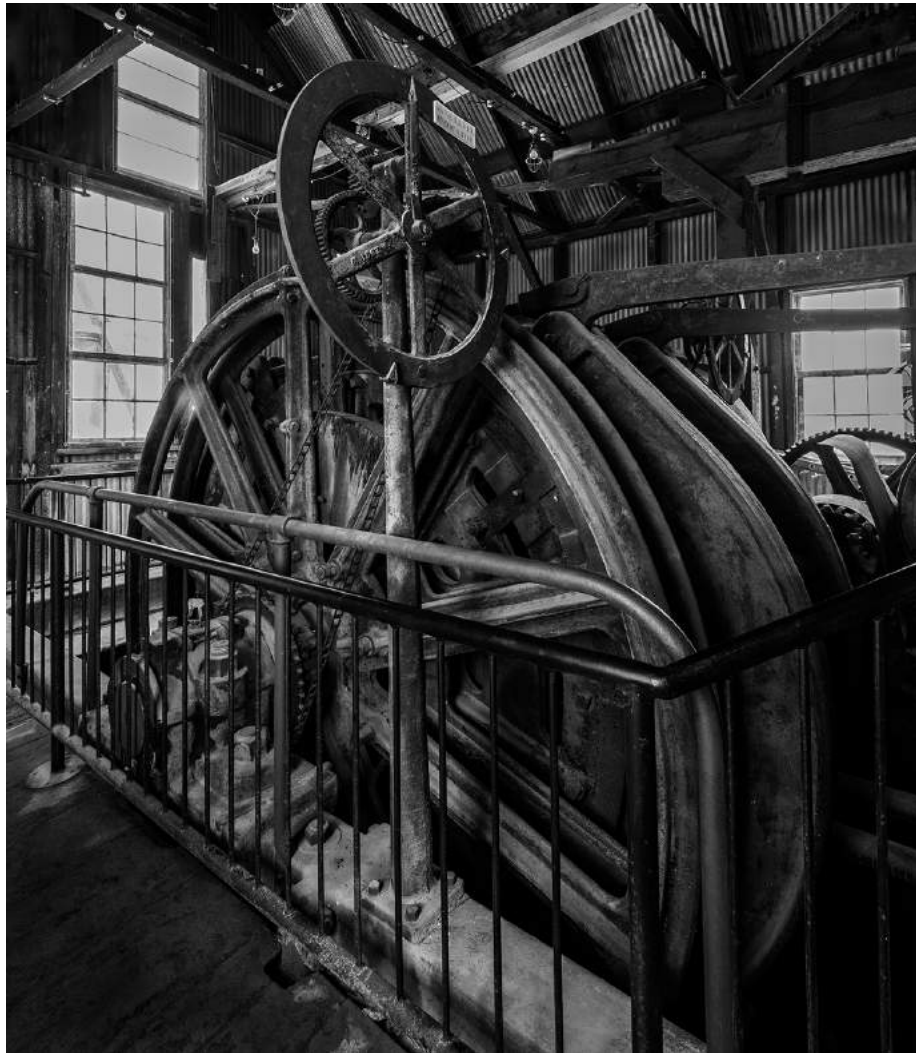
“MILKY WAY RISING OVER BOOT ARCH 2”

STEVEN FRIEDMAN (USA)

PID Mono General

Image No: 78

**2021 COACHELLA INTERNATIONAL EXHIBITION OF PHOTOGRAPHY
JOSHUA TREE JUDGING**



“MINEHEAD HOIST”

STEVEN FRIEDMAN (USA)

PID Mono Human-Made Objects

Image No: 79

**2021 COACHELLA INTERNATIONAL EXHIBITION OF PHOTOGRAPHY
JOSHUA TREE JUDGING**



CVDCC Gold

"TWO HANDS"

STEVEN FRIEDMAN (USA)

PID Mono General

Image No: 80

**2021 COACHELLA INTERNATIONAL EXHIBITION OF PHOTOGRAPHY
JOSHUA TREE JUDGING**



"BABY JAY 5576"

VIKI GAUL, APSA, PPSA (CANADA)

PID Mono General

Image No: 81

**2021 COACHELLA INTERNATIONAL EXHIBITION OF PHOTOGRAPHY
JOSHUA TREE JUDGING**



“BALLOON WITH FLAG DISPLAY”

VIKI GAUL, APSA, PPSA (CANADA)

PID Mono Human-Made Objects

Image No: 82

**2021 COACHELLA INTERNATIONAL EXHIBITION OF PHOTOGRAPHY
JOSHUA TREE JUDGING**



"BEAR APPROACHING 1549"

VIKI GAUL, APSA, PPSA (CANADA)

PID Mono General

Image No: 83

**2021 COACHELLA INTERNATIONAL EXHIBITION OF PHOTOGRAPHY
JOSHUA TREE JUDGING**



HM

“COLFAX BARN 6550”

VIKI GAUL, APSA, PPSA (CANADA)

PID Mono Human-Made Objects

Image No: 84

**2021 COACHELLA INTERNATIONAL EXHIBITION OF PHOTOGRAPHY
JOSHUA TREE JUDGING**



“EGRET ALMOST HOME 2269”

VIKI GAUL, APSA, PPSA (CANADA)

PID Mono General

Image No: 85

**2021 COACHELLA INTERNATIONAL EXHIBITION OF PHOTOGRAPHY
JOSHUA TREE JUDGING**



"FOGGY DAY 6038"

VIKI GAUL, APSA, PPSA (CANADA)

PID Mono Human-Made Objects

Image No: 86

**2021 COACHELLA INTERNATIONAL EXHIBITION OF PHOTOGRAPHY
JOSHUA TREE JUDGING**



“JAY WATCHING 8182”

VIKI GAUL, APSA, PPSA (CANADA)

PID Mono General

Image No: 87

**2021 COACHELLA INTERNATIONAL EXHIBITION OF PHOTOGRAPHY
JOSHUA TREE JUDGING**



"DC-3"

RICK GAUTHREAUX (USA)

PID Mono Human-Made Objects

Image No: 88

2021 COACHELLA INTERNATIONAL EXHIBITION OF PHOTOGRAPHY
JOSHUA TREE JUDGING



CVDCC Bronze

“METAL PETALS”

RICK GAUTHREAUX (USA)

PID Mono Human-Made Objects

Image No: 89

**2021 COACHELLA INTERNATIONAL EXHIBITION OF PHOTOGRAPHY
JOSHUA TREE JUDGING**



“SEND IN THE PAWNS”

RICK GAUTHREAUX (USA)

PID Mono Human-Made Objects

Image No: 90

**2021 COACHELLA INTERNATIONAL EXHIBITION OF PHOTOGRAPHY
JOSHUA TREE JUDGING**



“CONTRASTING TEXTURES IN FASHION”

JOAN GODDARD (USA)

PID Mono General

Image No: 91

**2021 COACHELLA INTERNATIONAL EXHIBITION OF PHOTOGRAPHY
JOSHUA TREE JUDGING**



“MAUI SENTINEL”

JOAN GODDARD (USA)

PID Mono General

Image No: 92

**2021 COACHELLA INTERNATIONAL EXHIBITION OF PHOTOGRAPHY
JOSHUA TREE JUDGING**



“MORMON TABERNACLE SAN DIEGO”

JOAN GODDARD (USA)

PID Mono General

Image No: 93

**2021 COACHELLA INTERNATIONAL EXHIBITION OF PHOTOGRAPHY
JOSHUA TREE JUDGING**



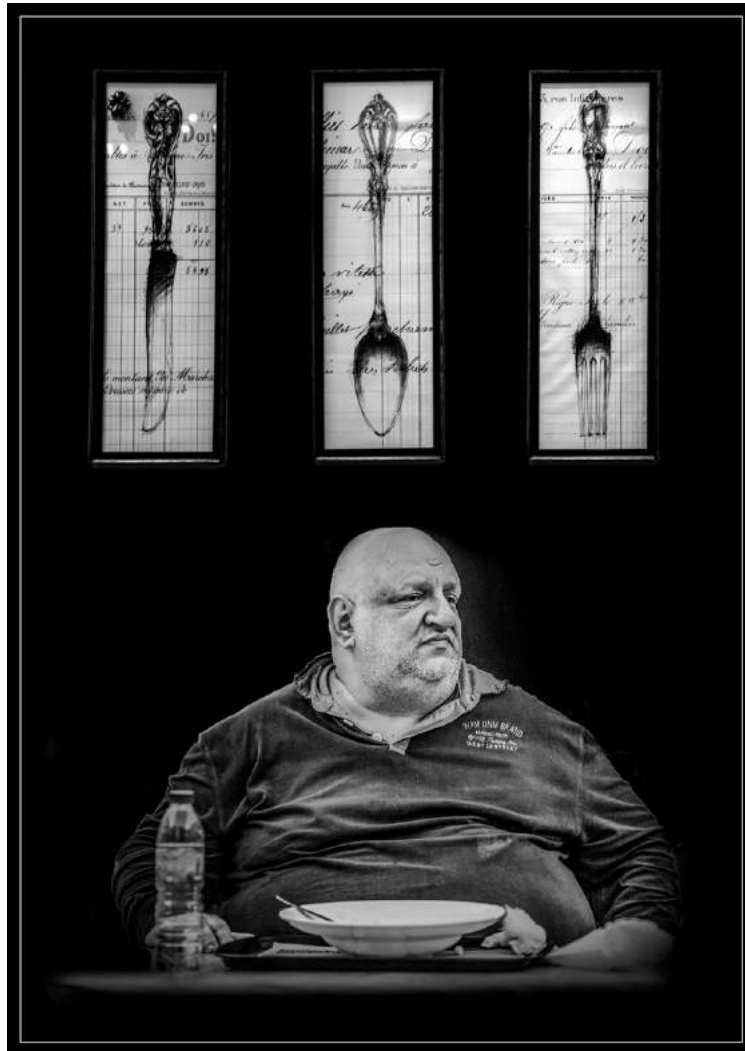
"HAND IN HAND"

LEONID GOLDIN (ISRAEL)

PID Mono General

Image No: 94

2021 COACHELLA INTERNATIONAL EXHIBITION OF PHOTOGRAPHY
JOSHUA TREE JUDGING



“SPECIAL DIET”

LEONID GOLDIN (ISRAEL)

PID Mono General

Image No: 95

**2021 COACHELLA INTERNATIONAL EXHIBITION OF PHOTOGRAPHY
JOSHUA TREE JUDGING**



“ALTES SCHLOSS 73”

WOLFGANG HABRINGER (AUSTRIA)

PID Mono Human-Made Objects

Image No: 96

**2021 COACHELLA INTERNATIONAL EXHIBITION OF PHOTOGRAPHY
JOSHUA TREE JUDGING**



“CLOSED 10”

WOLFGANG HABRINGER (AUSTRIA)

PID Mono Human-Made Objects

Image No: 97

**2021 COACHELLA INTERNATIONAL EXHIBITION OF PHOTOGRAPHY
JOSHUA TREE JUDGING**



"SCHLOSS ORTH 06"

WOLFGANG HABRINGER (AUSTRIA)

PID Mono General

Image No: 98

**2021 COACHELLA INTERNATIONAL EXHIBITION OF PHOTOGRAPHY
JOSHUA TREE JUDGING**



HM

“SOLITUDE 17”

WOLFGANG HABRINGER (AUSTRIA)

PID Mono General

Image No: 99

**2021 COACHELLA INTERNATIONAL EXHIBITION OF PHOTOGRAPHY
JOSHUA TREE JUDGING**



“THE WAY DOWN 23”

WOLFGANG HABRINGER (AUSTRIA)

PID Mono General

Image No: 100

**2021 COACHELLA INTERNATIONAL EXHIBITION OF PHOTOGRAPHY
JOSHUA TREE JUDGING**



“WHISPER WHISPER”

CHRISTINE HADFIELD (ENGLAND)

PID Mono General

Image No: 101

**2021 COACHELLA INTERNATIONAL EXHIBITION OF PHOTOGRAPHY
JOSHUA TREE JUDGING**



“ZEBRA DISAGREEMENT”

CHRISTINE HADFIELD (ENGLAND)

PID Mono General

Image No: 102

**2021 COACHELLA INTERNATIONAL EXHIBITION OF PHOTOGRAPHY
JOSHUA TREE JUDGING**



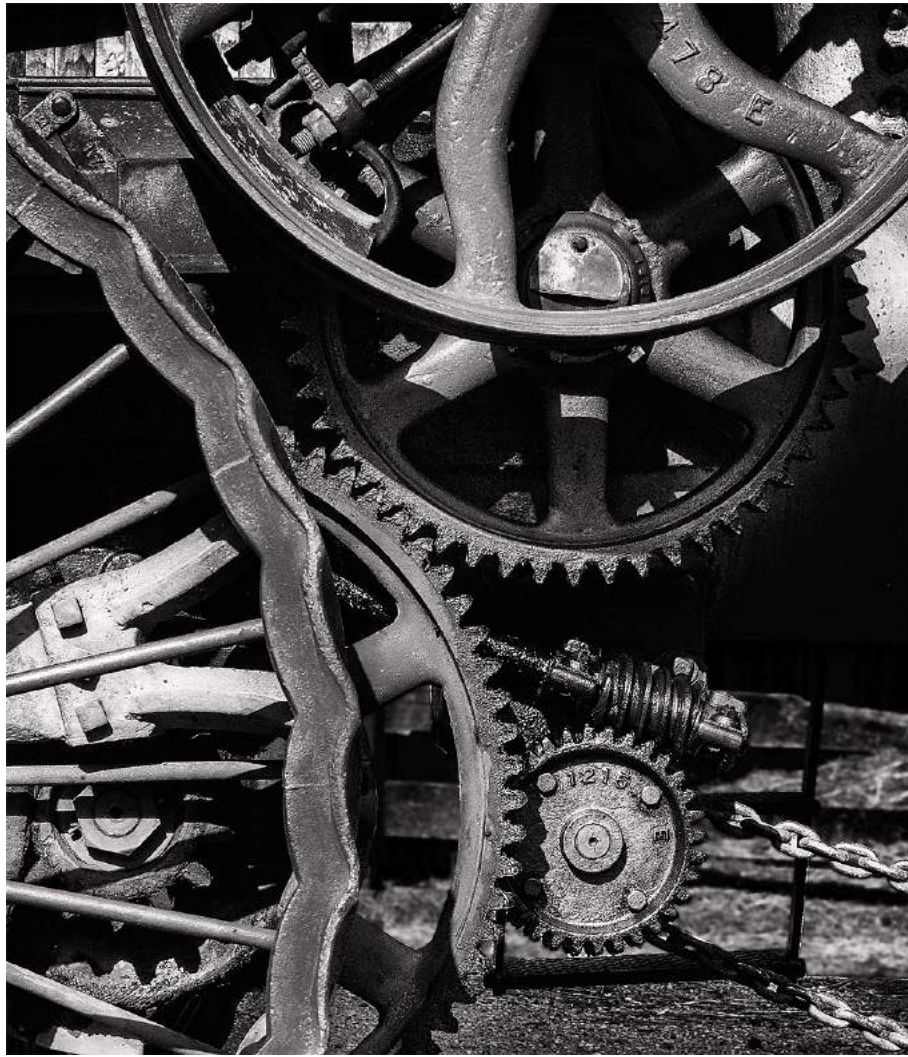
“SOLOMON TEMPLE”

JIM HAGAN (USA)

PID Mono General

Image No: 103

**2021 COACHELLA INTERNATIONAL EXHIBITION OF PHOTOGRAPHY
JOSHUA TREE JUDGING**



"WHEELS AND GEARS"

JIM HAGAN (USA)

PID Mono Human-Made Objects

Image No: 104

**2021 COACHELLA INTERNATIONAL EXHIBITION OF PHOTOGRAPHY
JOSHUA TREE JUDGING**



HM

“ELEFANTENSCHUTZ”

RALF HANISCH, MPSA (GERMANY)

PID Mono General

Image No: 105

**2021 COACHELLA INTERNATIONAL EXHIBITION OF PHOTOGRAPHY
JOSHUA TREE JUDGING**



“FLIC FLAC, WITH A SMILE”

RALF HANISCH, MPSA (GERMANY)

PID Mono General

Image No: 106

**2021 COACHELLA INTERNATIONAL EXHIBITION OF PHOTOGRAPHY
JOSHUA TREE JUDGING**



"WALKING BY MYSELF"

RALF HANISCH, MPSA (GERMANY)

PID Mono General

Image No: 107

**2021 COACHELLA INTERNATIONAL EXHIBITION OF PHOTOGRAPHY
JOSHUA TREE JUDGING**



"LATE AFTERNOON JOY"

MOGENS HERMANSEN (USA)

PID Mono General

Image No: 108

**2021 COACHELLA INTERNATIONAL EXHIBITION OF PHOTOGRAPHY
JOSHUA TREE JUDGING**



“MORNING FOG AT THE BEACH”

MOGENS HERMANSEN (USA)

PID Mono General

Image No: 109

**2021 COACHELLA INTERNATIONAL EXHIBITION OF PHOTOGRAPHY
JOSHUA TREE JUDGING**



"SPIRAL 8"

HUNG HO (USA)

PID Mono General

Image No: 110

**2021 COACHELLA INTERNATIONAL EXHIBITION OF PHOTOGRAPHY
JOSHUA TREE JUDGING**



"ALONE AND ABANDONED"

ELAINE HOLLIDAY (AUSTRALIA)

PID Mono General

Image No: 111

**2021 COACHELLA INTERNATIONAL EXHIBITION OF PHOTOGRAPHY
JOSHUA TREE JUDGING**



“CHASING WINDOWS”

ELAINE HOLLIDAY (AUSTRALIA)

PID Mono General

Image No: 112

**2021 COACHELLA INTERNATIONAL EXHIBITION OF PHOTOGRAPHY
JOSHUA TREE JUDGING**



"CHEVROLET 20"

ELAINE HOLLIDAY (AUSTRALIA)

PID Mono Human-Made Objects

Image No: 113

**2021 COACHELLA INTERNATIONAL EXHIBITION OF PHOTOGRAPHY
JOSHUA TREE JUDGING**



“CURVING AT QVB”

ELAINE HOLLIDAY (AUSTRALIA)

PID Mono Human-Made Objects

Image No: 114

**2021 COACHELLA INTERNATIONAL EXHIBITION OF PHOTOGRAPHY
JOSHUA TREE JUDGING**



“QVB CURVES”

ELAINE HOLLIDAY (AUSTRALIA)

PID Mono General

Image No: 115

2021 COACHELLA INTERNATIONAL EXHIBITION OF PHOTOGRAPHY
JOSHUA TREE JUDGING



“SHOES”

ELAINE HOLLIDAY (AUSTRALIA)

PID Mono Human-Made Objects

Image No: 116

**2021 COACHELLA INTERNATIONAL EXHIBITION OF PHOTOGRAPHY
JOSHUA TREE JUDGING**



HM

“BRAHMSKONTOR TAKE2”

HANS-PETER HORNBOSTEL, PPSA (GERMANY)

PID Mono General

Image No: 117

**2021 COACHELLA INTERNATIONAL EXHIBITION OF PHOTOGRAPHY
JOSHUA TREE JUDGING**



"DOCKLAND TAKE2"

HANS-PETER HORNBOSTEL, PPSA (GERMANY)

PID Mono General

Image No: 118

**2021 COACHELLA INTERNATIONAL EXHIBITION OF PHOTOGRAPHY
JOSHUA TREE JUDGING**



"TIBETAN GIRL READING"

YOUMANS HSIONG, PPSA (USA)

PID Mono General

Image No: 119

**2021 COACHELLA INTERNATIONAL EXHIBITION OF PHOTOGRAPHY
JOSHUA TREE JUDGING**



“GRANDFATHERS WATCH”

GEORGE HUTCHISON, QPSA (USA)

PID Mono General

Image No: 120

**2021 COACHELLA INTERNATIONAL EXHIBITION OF PHOTOGRAPHY
JOSHUA TREE JUDGING**



“SUPERCHARGED”

GEORGE HUTCHISON, QPSA (USA)

PID Mono Human-Made Objects

Image No: 121

**2021 COACHELLA INTERNATIONAL EXHIBITION OF PHOTOGRAPHY
JOSHUA TREE JUDGING**



“OVER HILL TOP JUMP”

FRANCIS KENNEDY, EPSA (AUSTRALIA)

PID Mono General

Image No: 122

**2021 COACHELLA INTERNATIONAL EXHIBITION OF PHOTOGRAPHY
JOSHUA TREE JUDGING**



"GREAT WALL IN RAIN"

FRANCIS KING, GMP SA (CANADA)

PID Mono Human-Made Objects

Image No: 123

**2021 COACHELLA INTERNATIONAL EXHIBITION OF PHOTOGRAPHY
JOSHUA TREE JUDGING**



“PALACE UNDER GLOOMY SKY”

FRANCIS KING, GMP SA (CANADA)

PID Mono Human-Made Objects

Image No: 124

**2021 COACHELLA INTERNATIONAL EXHIBITION OF PHOTOGRAPHY
JOSHUA TREE JUDGING**



"TAKING A SHORTCUT 103"

FRANCIS KING, GMP SA (CANADA)

PID Mono General

Image No: 125

**2021 COACHELLA INTERNATIONAL EXHIBITION OF PHOTOGRAPHY
JOSHUA TREE JUDGING**



“WAITING FOR CHANCE”

FRANCIS KING, GMP SA (CANADA)

PID Mono General

Image No: 126

2021 COACHELLA INTERNATIONAL EXHIBITION OF PHOTOGRAPHY
JOSHUA TREE JUDGING



“YUMMY”

FRANCIS KING, GMPSA (CANADA)

PID Mono General

Image No: 127

**2021 COACHELLA INTERNATIONAL EXHIBITION OF PHOTOGRAPHY
JOSHUA TREE JUDGING**



“ANIMALS DRINKING”

VALERIE KLEINDIENST (AUSTRALIA)

PID Mono General

Image No: 128

**2021 COACHELLA INTERNATIONAL EXHIBITION OF PHOTOGRAPHY
JOSHUA TREE JUDGING**



"CAT ON CAR"

VALERIE KLEINDIENST (AUSTRALIA)

PID Mono General

Image No: 129

2021 COACHELLA INTERNATIONAL EXHIBITION OF PHOTOGRAPHY
JOSHUA TREE JUDGING



"INTERIOR ST SAVA"

VALERIE KLEINDIENST (AUSTRALIA)

PID Mono Human-Made Objects

Image No: 130

**2021 COACHELLA INTERNATIONAL EXHIBITION OF PHOTOGRAPHY
JOSHUA TREE JUDGING**



“GLOWING GLASSWARE”

IRENE KRAMER, EPSA (USA)

PID Mono Human-Made Objects

Image No: 131

2021 COACHELLA INTERNATIONAL EXHIBITION OF PHOTOGRAPHY
JOSHUA TREE JUDGING



“ST LOUIS PRIORY”

IRENE KRAMER, EPSA (USA)

PID Mono Human-Made Objects

Image No: 132

**2021 COACHELLA INTERNATIONAL EXHIBITION OF PHOTOGRAPHY
JOSHUA TREE JUDGING**



“SYMMETRY”

IRENE KRAMER, EPSA (USA)

PID Mono General

Image No: 133

2021 COACHELLA INTERNATIONAL EXHIBITION OF PHOTOGRAPHY
JOSHUA TREE JUDGING



“SPACE TRAVELER”

BARBARA KUEBLER, APSA, MPSA (USA)

PID Mono General

Image No: 134

**2021 COACHELLA INTERNATIONAL EXHIBITION OF PHOTOGRAPHY
JOSHUA TREE JUDGING**



"GREAT GRAY OWL 62"

PHILLIP KWAN, GMPSA/G, GPSA (CANADA)

PID Mono General

Image No: 135

**2021 COACHELLA INTERNATIONAL EXHIBITION OF PHOTOGRAPHY
JOSHUA TREE JUDGING**



“HORSES IN WATER 88”

PHILLIP KWAN, GMPSA/G, GPSA (CANADA)

PID Mono General

Image No: 136

**2021 COACHELLA INTERNATIONAL EXHIBITION OF PHOTOGRAPHY
JOSHUA TREE JUDGING**



"NONNI2 11"

PHILLIP KWAN, GMPA/G, GPPA (CANADA)

PID Mono General

Image No: 137

**2021 COACHELLA INTERNATIONAL EXHIBITION OF PHOTOGRAPHY
JOSHUA TREE JUDGING**



“HORSE ROUND UP 32”

PHILLIP KWAN, GMPA/G, GPSA (CANADA)

PID Mono General

Image No: 138

2021 COACHELLA INTERNATIONAL EXHIBITION OF PHOTOGRAPHY
JOSHUA TREE JUDGING



Judge's Choice

"BUDDHA HOPE"

CHAU KEI CHECKY LAM (HONG KONG)

PID Mono Human-Made Objects

Image No: 139

**2021 COACHELLA INTERNATIONAL EXHIBITION OF PHOTOGRAPHY
JOSHUA TREE JUDGING**



"DREAM GIRL"

CHAU KEI CHECKY LAM (HONG KONG)

PID Mono General

Image No: 140

**2021 COACHELLA INTERNATIONAL EXHIBITION OF PHOTOGRAPHY
JOSHUA TREE JUDGING**



CVDCC Gold

“DREAM HOME”

CHAU KEI CHECKY LAM (HONG KONG)

PID Mono Human-Made Objects

Image No: 141

2021 COACHELLA INTERNATIONAL EXHIBITION OF PHOTOGRAPHY
JOSHUA TREE JUDGING



Judge's Choice

"EGRET LOVE"

CHAU KEI CHECKY LAM (HONG KONG)

PID Mono General

Image No: 142

**2021 COACHELLA INTERNATIONAL EXHIBITION OF PHOTOGRAPHY
JOSHUA TREE JUDGING**



“JUMPING OVER FIRE”

CHAU KEI CHECKY LAM (HONG KONG)

PID Mono General

Image No: 143

**2021 COACHELLA INTERNATIONAL EXHIBITION OF PHOTOGRAPHY
JOSHUA TREE JUDGING**



“THE GREAT WALL MORNING”

CHAU KEI CHECKY LAM (HONG KONG)

PID Mono Human-Made Objects

Image No: 144

**2021 COACHELLA INTERNATIONAL EXHIBITION OF PHOTOGRAPHY
JOSHUA TREE JUDGING**



“FISH PORT IN PEGGY COVE”

JILL LAM (CANADA)

PID Mono General

Image No: 145

**2021 COACHELLA INTERNATIONAL EXHIBITION OF PHOTOGRAPHY
JOSHUA TREE JUDGING**



“CAMEL JOURNEY”

TAT CHUEN LAM (CHINA)

PID Mono General

Image No: 146

**2021 COACHELLA INTERNATIONAL EXHIBITION OF PHOTOGRAPHY
JOSHUA TREE JUDGING**



“WEAVING”

TAT CHUEN LAM (CHINA)

PID Mono General

Image No: 147

**2021 COACHELLA INTERNATIONAL EXHIBITION OF PHOTOGRAPHY
JOSHUA TREE JUDGING**



“STORM AT ST ALDHELMS CHAPEL”

JOHN LARRY (ENGLAND)

PID Mono General

Image No: 148

**2021 COACHELLA INTERNATIONAL EXHIBITION OF PHOTOGRAPHY
JOSHUA TREE JUDGING**



"CORAL AT ALABAMA HILLS"

WILLIAM LARUE (USA)

PID Mono General

Image No: 149

2021 COACHELLA INTERNATIONAL EXHIBITION OF PHOTOGRAPHY
JOSHUA TREE JUDGING



“CHESS”

ADRIAN LINES (ENGLAND)

PID Mono General

Image No: 150

**2021 COACHELLA INTERNATIONAL EXHIBITION OF PHOTOGRAPHY
JOSHUA TREE JUDGING**



CVDCC Silver

"KNITTING WITH ATTATURK"

ADRIAN LINES (ENGLAND)

PID Mono General

Image No: 151

**2021 COACHELLA INTERNATIONAL EXHIBITION OF PHOTOGRAPHY
JOSHUA TREE JUDGING**



"MAN AND DOG"

ADRIAN LINES (ENGLAND)

PID Mono General

Image No: 152

**2021 COACHELLA INTERNATIONAL EXHIBITION OF PHOTOGRAPHY
JOSHUA TREE JUDGING**



“PREPARED FOR THE PANDEMIC”

MARKHAM MAIL (NEW ZEALAND)

PID Mono General

Image No: 153

**2021 COACHELLA INTERNATIONAL EXHIBITION OF PHOTOGRAPHY
JOSHUA TREE JUDGING**



"IN THE HANDS OF LOVE"

LUC MAIRESSE, MPSA, SPSA (BELGIUM)

PID Mono General

Image No: 154

2021 COACHELLA INTERNATIONAL EXHIBITION OF PHOTOGRAPHY
JOSHUA TREE JUDGING



CVDCC Bronze

“REFLEXIONS ABOUT THE PAST”

LUC MAIRESSE, MPSA, SPSA (BELGIUM)

PID Mono General

Image No: 155

**2021 COACHELLA INTERNATIONAL EXHIBITION OF PHOTOGRAPHY
JOSHUA TREE JUDGING**



“ANTELOPE CANYON STUDY 1920”

JEFF MCDONALD, QPSA (USA)

PID Mono General

Image No: 156

2021 COACHELLA INTERNATIONAL EXHIBITION OF PHOTOGRAPHY
JOSHUA TREE JUDGING



HM

“BRISE SOLEIL WITH CLOUDS OP 1376”

JEFF MCDONALD, QPSA (USA)

PID Mono Human-Made Objects

Image No: 157

**2021 COACHELLA INTERNATIONAL EXHIBITION OF PHOTOGRAPHY
JOSHUA TREE JUDGING**



“MANISTEE LIGHT OP 1877”

JEFF MCDONALD, QPSA (USA)

PID Mono Human-Made Objects

Image No: 158

**2021 COACHELLA INTERNATIONAL EXHIBITION OF PHOTOGRAPHY
JOSHUA TREE JUDGING**



HM

“OAK IN HOAR FROST STUDY 1930”

JEFF MCDONALD, QPSA (USA)

PID Mono General

Image No: 159

**2021 COACHELLA INTERNATIONAL EXHIBITION OF PHOTOGRAPHY
JOSHUA TREE JUDGING**



CVDCC Bronze

“STURGEON BAY LIGHT OP 1637”

JEFF MCDONALD, QPSA (USA)

PID Mono Human-Made Objects

Image No: 160

**2021 COACHELLA INTERNATIONAL EXHIBITION OF PHOTOGRAPHY
JOSHUA TREE JUDGING**



HM

“TOUCH THE SKY OP 1536”

JEFF MCDONALD, QPSA (USA)

PID Mono General

Image No: 161

**2021 COACHELLA INTERNATIONAL EXHIBITION OF PHOTOGRAPHY
JOSHUA TREE JUDGING**



HM

“YEI BI CHEI AND TOTEM”

JEFF MCDONALD, QPSA (USA)

PID Mono General

Image No: 162

2021 COACHELLA INTERNATIONAL EXHIBITION OF PHOTOGRAPHY
JOSHUA TREE JUDGING



CVDCC Silver

“ANTIQUITIES ONE”

DEE MCMILLAN (USA)

PID Mono Human-Made Objects

Image No: 163

2021 COACHELLA INTERNATIONAL EXHIBITION OF PHOTOGRAPHY
JOSHUA TREE JUDGING



HM

"CLEMATIS 12"

DEE MCMILLAN (USA)

PID Mono General

Image No: 164

**2021 COACHELLA INTERNATIONAL EXHIBITION OF PHOTOGRAPHY
JOSHUA TREE JUDGING**



"OIL CANS ONE"

DEE MCMILLAN (USA)

PID Mono Human-Made Objects

Image No: 165

**2021 COACHELLA INTERNATIONAL EXHIBITION OF PHOTOGRAPHY
JOSHUA TREE JUDGING**



“PAVILLION ONE SPOKANE”

DEE MCMILLAN (USA)

PID Mono Human-Made Objects

Image No: 166

**2021 COACHELLA INTERNATIONAL EXHIBITION OF PHOTOGRAPHY
JOSHUA TREE JUDGING**



“HELGOLAND GANNETS 2021”

VOLKER MEINBERG, GMPA/S (GERMANY)

PID Mono General

Image No: 167

**2021 COACHELLA INTERNATIONAL EXHIBITION OF PHOTOGRAPHY
JOSHUA TREE JUDGING**



“SIBIRIAN ISLANDS 15”

VOLKER MEINBERG, GMP SA/S (GERMANY)

PID Mono General

Image No: 168

**2021 COACHELLA INTERNATIONAL EXHIBITION OF PHOTOGRAPHY
JOSHUA TREE JUDGING**



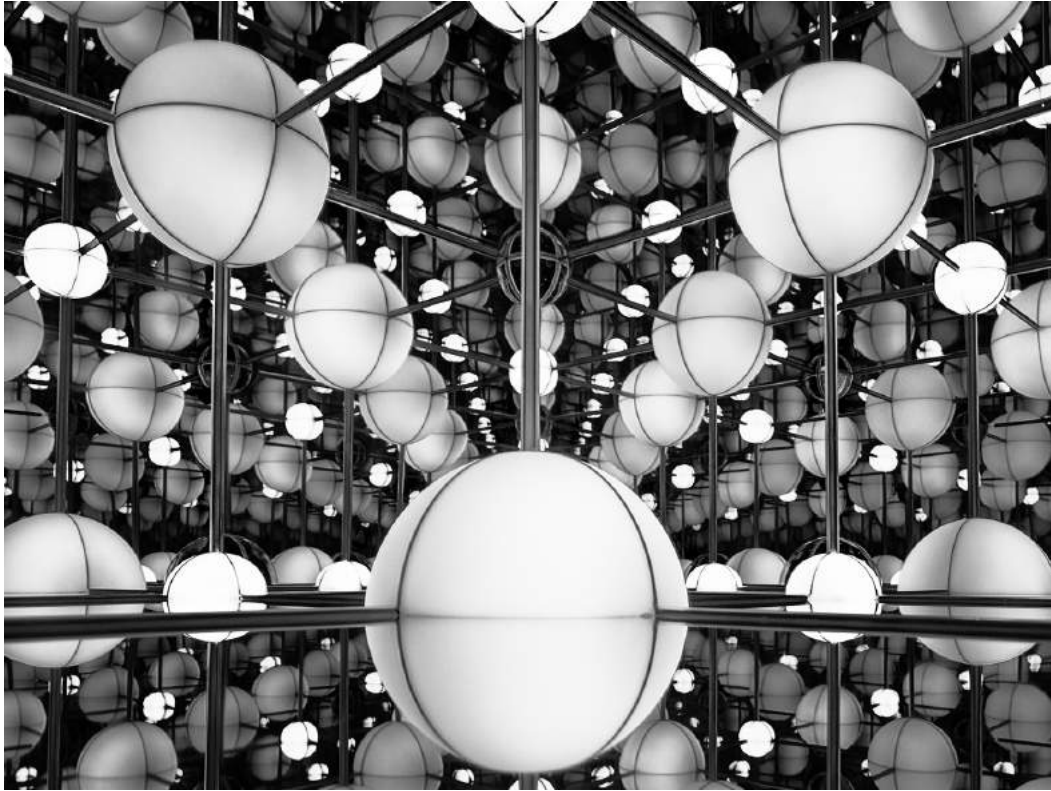
“THE PALOUSE 07”

VOLKER MEINBERG, GMP SA/S (GERMANY)

PID Mono General

Image No: 169

2021 COACHELLA INTERNATIONAL EXHIBITION OF PHOTOGRAPHY
JOSHUA TREE JUDGING



“ATOMIUM BW”

GABRIELE MEYERHOEFER, QPSA (GERMANY)

PID Mono Human-Made Objects

Image No: 170

2021 COACHELLA INTERNATIONAL EXHIBITION OF PHOTOGRAPHY
JOSHUA TREE JUDGING



CVDCC Bronze

“AUTOBAHNKIRCHE”

GABRIELE MEYERHOEFER, QPSA (GERMANY)

PID Mono Human-Made Objects

Image No: 171

2021 COACHELLA INTERNATIONAL EXHIBITION OF PHOTOGRAPHY
JOSHUA TREE JUDGING



“EMERGENCY EXIT”

GABRIELE MEYERHOEFER, QPSA (GERMANY)

PID Mono General

Image No: 172

**2021 COACHELLA INTERNATIONAL EXHIBITION OF PHOTOGRAPHY
JOSHUA TREE JUDGING**



"FJORDHAUS"

GABRIELE MEYERHOEFER, QPSA (GERMANY)

PID Mono Human-Made Objects

Image No: 173

2021 COACHELLA INTERNATIONAL EXHIBITION OF PHOTOGRAPHY
JOSHUA TREE JUDGING



HM

“FREUDENBERG 01”

GABRIELE MEYERHOEFER, QPSA (GERMANY)

PID Mono Human-Made Objects

Image No: 174

2021 COACHELLA INTERNATIONAL EXHIBITION OF PHOTOGRAPHY
JOSHUA TREE JUDGING



HM

“GOTHAM”

GABRIELE MEYERHOEFER, QPSA (GERMANY)

PID Mono General

Image No: 175

**2021 COACHELLA INTERNATIONAL EXHIBITION OF PHOTOGRAPHY
JOSHUA TREE JUDGING**



“WAITING FOR NICE WEATHER”

GABRIELE MEYERHOEFER, QPSA (GERMANY)

PID Mono General

Image No: 176

**2021 COACHELLA INTERNATIONAL EXHIBITION OF PHOTOGRAPHY
JOSHUA TREE JUDGING**



PSA Best of Show Gold

“DEAR COVID”

TERRY MIRANDA (USA)

PID Mono General

Image No: 177

**2021 COACHELLA INTERNATIONAL EXHIBITION OF PHOTOGRAPHY
JOSHUA TREE JUDGING**



“FORGOTTEN TRAIN”

TERRY MIRANDA (USA)

PID Mono General

Image No: 178

**2021 COACHELLA INTERNATIONAL EXHIBITION OF PHOTOGRAPHY
JOSHUA TREE JUDGING**



HM

“SOUTH MELBOURNE ARCHITECTURE”

VICKI MORITZ, GMPSA (AUSTRALIA)

PID Mono Human-Made Objects

Image No: 179

2021 COACHELLA INTERNATIONAL EXHIBITION OF PHOTOGRAPHY JOSHUA TREE JUDGING



“HOW FEAR CAME”

PEGGY NUGENT (USA)

PID Mono General

Image No: 180

**2021 COACHELLA INTERNATIONAL EXHIBITION OF PHOTOGRAPHY
JOSHUA TREE JUDGING**



"FROG BY THE THROAT"

CRAIG PARKER, MPSA, BPSA (AUSTRALIA)

PID Mono General

Image No: 181

**2021 COACHELLA INTERNATIONAL EXHIBITION OF PHOTOGRAPHY
JOSHUA TREE JUDGING**



“OXPECKER STARING AT BUFFALO”

CRAIG PARKER, MPSA, BPSA (AUSTRALIA)

PID Mono General

Image No: 182

**2021 COACHELLA INTERNATIONAL EXHIBITION OF PHOTOGRAPHY
JOSHUA TREE JUDGING**



"WEAVER NEST CONSTRUCTION 04"

CRAIG PARKER, MPSA, BPSA (AUSTRALIA)

PID Mono General

Image No: 183

**2021 COACHELLA INTERNATIONAL EXHIBITION OF PHOTOGRAPHY
JOSHUA TREE JUDGING**



"SOFT KITTY"

ELIZABETH PASSUELLO, EPSA (NEW ZEALAND)

PID Mono General

Image No: 184

**2021 COACHELLA INTERNATIONAL EXHIBITION OF PHOTOGRAPHY
JOSHUA TREE JUDGING**



"GRIZZLY EVENING DIP"

ANGELA POGGIONI, PPSA (USA)

PID Mono General

Image No: 185

**2021 COACHELLA INTERNATIONAL EXHIBITION OF PHOTOGRAPHY
JOSHUA TREE JUDGING**



"IT'S ALWAYS LUNCH TIME FOR GRIZZLY"

ANGELA POGGIONI, PPSA (USA)

PID Mono General

Image No: 186

**2021 COACHELLA INTERNATIONAL EXHIBITION OF PHOTOGRAPHY
JOSHUA TREE JUDGING**



HM

“CORN REVEALED”

JUDITH PONTI-SGARGI (CANADA)

PID Mono General

Image No: 187

**2021 COACHELLA INTERNATIONAL EXHIBITION OF PHOTOGRAPHY
JOSHUA TREE JUDGING**



HM

“EGG AND FEATHERS”

JUDITH PONTI-SGARGI (CANADA)

PID Mono General

Image No: 188

**2021 COACHELLA INTERNATIONAL EXHIBITION OF PHOTOGRAPHY
JOSHUA TREE JUDGING**



"LUKE"

JUDITH PONTI-SGARGI (CANADA)

PID Mono General

Image No: 189

**2021 COACHELLA INTERNATIONAL EXHIBITION OF PHOTOGRAPHY
JOSHUA TREE JUDGING**



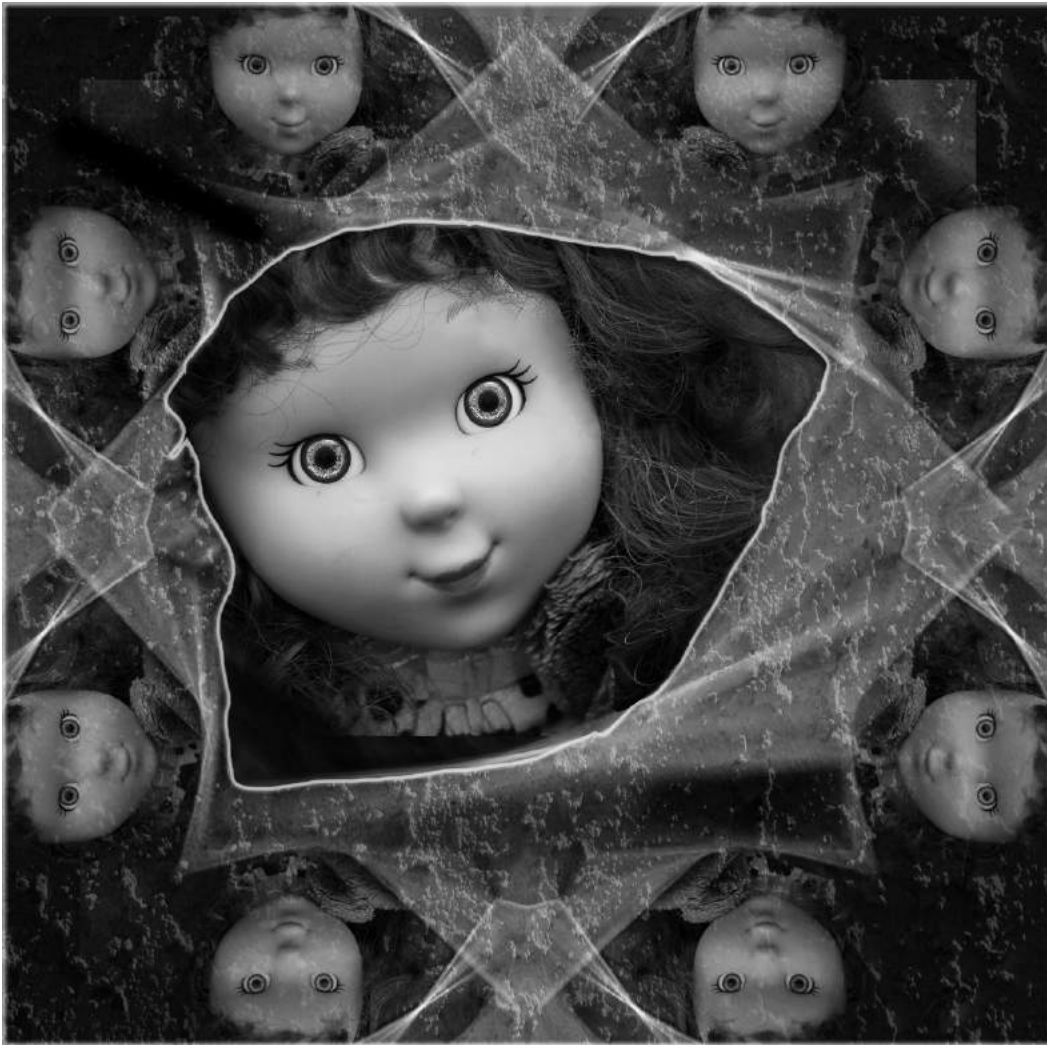
"ON PIGEON RIDGE"

JAMES POWERS (USA)

PID Mono General

Image No: 190

2021 COACHELLA INTERNATIONAL EXHIBITION OF PHOTOGRAPHY
JOSHUA TREE JUDGING



Judge's Choice

"DOLL VIEW BW"

WITTA PRIESTER (USA)

PID Mono Human-Made Objects

Image No: 191

2021 COACHELLA INTERNATIONAL EXHIBITION OF PHOTOGRAPHY
JOSHUA TREE JUDGING



"HALLWAY IN 5 PARTS BW"

WITTA PRIESTER (USA)

PID Mono General

Image No: 192

**2021 COACHELLA INTERNATIONAL EXHIBITION OF PHOTOGRAPHY
JOSHUA TREE JUDGING**



“JAPANESE MAPLE IN PORTLAND -BW”

WITTA PRIESTER (USA)

PID Mono General

Image No: 193

**2021 COACHELLA INTERNATIONAL EXHIBITION OF PHOTOGRAPHY
JOSHUA TREE JUDGING**



"PALOUSE BARN IR"

WITTA PRIESTER (USA)

PID Mono General

Image No: 194

**2021 COACHELLA INTERNATIONAL EXHIBITION OF PHOTOGRAPHY
JOSHUA TREE JUDGING**



"PAPER ROLLS 2 BW"

WITTA PRIESTER (USA)

PID Mono Human-Made Objects

Image No: 195

2021 COACHELLA INTERNATIONAL EXHIBITION OF PHOTOGRAPHY
JOSHUA TREE JUDGING



“DARKNESS AND LIGHT”

BIRGIT PUSTELNIK, PPSA (GERMANY)

PID Mono General

Image No: 196

**2021 COACHELLA INTERNATIONAL EXHIBITION OF PHOTOGRAPHY
JOSHUA TREE JUDGING**



“HARP”

BIRGIT PUSTELNIK, PPSA (GERMANY)

PID Mono General

Image No: 197

**2021 COACHELLA INTERNATIONAL EXHIBITION OF PHOTOGRAPHY
JOSHUA TREE JUDGING**



“KEYHOLE”

BIRGIT PUSTELNIK, PPSA (GERMANY)

PID Mono General

Image No: 198

**2021 COACHELLA INTERNATIONAL EXHIBITION OF PHOTOGRAPHY
JOSHUA TREE JUDGING**



“SING IT”

BIRGIT PUSTELNIK, PPSA (GERMANY)

PID Mono General

Image No: 199

**2021 COACHELLA INTERNATIONAL EXHIBITION OF PHOTOGRAPHY
JOSHUA TREE JUDGING**



“HAPPY HEARTS”

RAVINDRA RANASINGHE (SRI LANKA)

PID Mono General

Image No: 200

**2021 COACHELLA INTERNATIONAL EXHIBITION OF PHOTOGRAPHY
JOSHUA TREE JUDGING**



“THE COCONUT BREAKING RITUAL”

RAVINDRA RANASINGHE (SRI LANKA)

PID Mono General

Image No: 201

**2021 COACHELLA INTERNATIONAL EXHIBITION OF PHOTOGRAPHY
JOSHUA TREE JUDGING**



“BREITLING S7”

GUNTHER RIEHLE, APSA, GMPSA/P (GERMANY)

PID Mono General

Image No: 202

**2021 COACHELLA INTERNATIONAL EXHIBITION OF PHOTOGRAPHY
JOSHUA TREE JUDGING**



"ELEPHANT SEAL PUP ON BEACH HI 102"

GUNTHER RIEHLE, APSA, GMPSA/P (GERMANY)

PID Mono General

Image No: 203

2021 COACHELLA INTERNATIONAL EXHIBITION OF PHOTOGRAPHY JOSHUA TREE JUDGING



“STUTTGART LIBRARY 12”

GUNTHER RIEHLE, APSA, GMPSA/P (GERMANY)

PID Mono General

Image No: 204

**2021 COACHELLA INTERNATIONAL EXHIBITION OF PHOTOGRAPHY
JOSHUA TREE JUDGING**



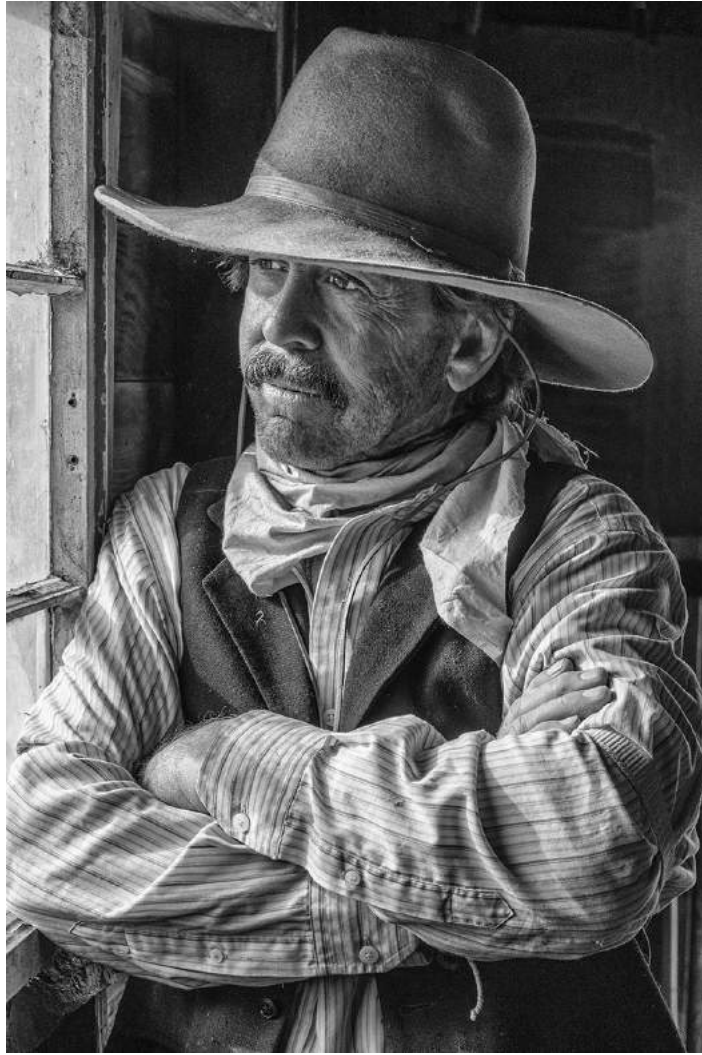
“WIND SWEPT COAST-OREGON”

ERIK ROSENGREN, FPSA, PPSA (USA)

PID Mono General

Image No: 205

**2021 COACHELLA INTERNATIONAL EXHIBITION OF PHOTOGRAPHY
JOSHUA TREE JUDGING**



CVDCC Bronze

“CONTEMPLATING THE RANCH”

JR SCHNELZER, FPSA, MPSA (USA)

PID Mono General

Image No: 206

**2021 COACHELLA INTERNATIONAL EXHIBITION OF PHOTOGRAPHY
JOSHUA TREE JUDGING**



“STRANGE BUILDING”

JR SCHNELZER, FPSA, MPSA (USA)

PID Mono Human-Made Objects

Image No: 207

**2021 COACHELLA INTERNATIONAL EXHIBITION OF PHOTOGRAPHY
JOSHUA TREE JUDGING**



“SWEPT AWAY”

JR SCHNELZER, FPSA, MPSA (USA)

PID Mono General

Image No: 208

**2021 COACHELLA INTERNATIONAL EXHIBITION OF PHOTOGRAPHY
JOSHUA TREE JUDGING**



"WALK DOWN DARK HEDGES"

JR SCHNELZER, FPSA, MPSA (USA)

PID Mono General

Image No: 209

**2021 COACHELLA INTERNATIONAL EXHIBITION OF PHOTOGRAPHY
JOSHUA TREE JUDGING**



“BLAUE STUNDE”

WOLFGANG SCHWEDEN, GMP SA/S (GERMANY)

PID Mono Human-Made Objects

Image No: 210

**2021 COACHELLA INTERNATIONAL EXHIBITION OF PHOTOGRAPHY
JOSHUA TREE JUDGING**



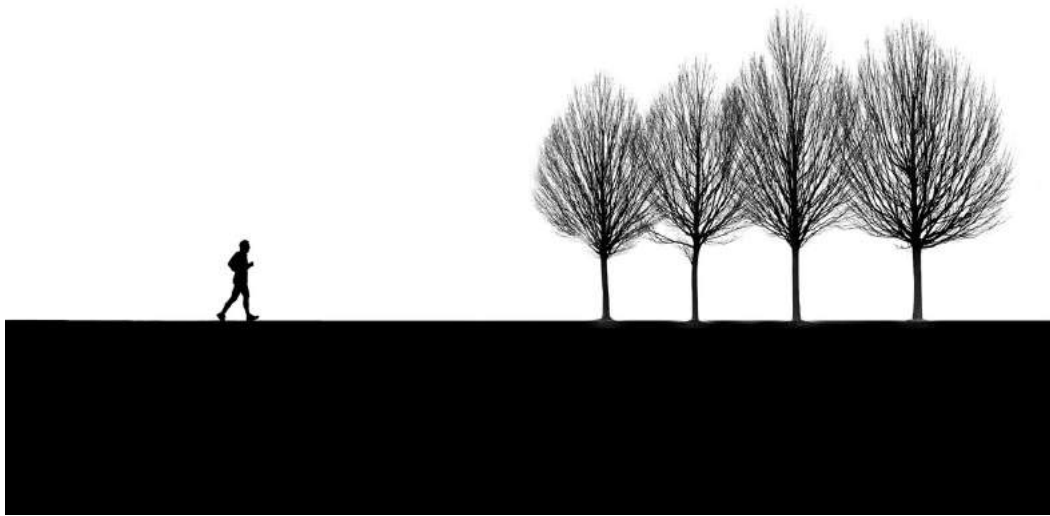
“GAEHN”

WOLFGANG SCHWEDEN, GMPA/S (GERMANY)

PID Mono General

Image No: 211

**2021 COACHELLA INTERNATIONAL EXHIBITION OF PHOTOGRAPHY
JOSHUA TREE JUDGING**



“RUNNER IN SUNSET 1”

WOLFGANG SCHWEDEN, GMP SA/S (GERMANY)

PID Mono General

Image No: 212

**2021 COACHELLA INTERNATIONAL EXHIBITION OF PHOTOGRAPHY
JOSHUA TREE JUDGING**



"LONE LEANING SNOW JOSHUA"

SCOTT SHACKELFORD (USA)

PID Mono General

Image No: 213

2021 COACHELLA INTERNATIONAL EXHIBITION OF PHOTOGRAPHY
JOSHUA TREE JUDGING



“STEAM ENGINE NUMBER 90 UP CLOSE”

SCOTT SHACKELFORD (USA)

PID Mono Human-Made Objects

Image No: 214

2021 COACHELLA INTERNATIONAL EXHIBITION OF PHOTOGRAPHY
JOSHUA TREE JUDGING



"BKS_4099 B"

BARUN SINHA (INDIA)

PID Mono General

Image No: 215

**2021 COACHELLA INTERNATIONAL EXHIBITION OF PHOTOGRAPHY
JOSHUA TREE JUDGING**



"BKS_4101"

BARUN SINHA (INDIA)

PID Mono General

Image No: 216

**2021 COACHELLA INTERNATIONAL EXHIBITION OF PHOTOGRAPHY
JOSHUA TREE JUDGING**



“THE ETERNAL WAIT”

BARUN SINHA (INDIA)

PID Mono Human-Made Objects

Image No: 217

**2021 COACHELLA INTERNATIONAL EXHIBITION OF PHOTOGRAPHY
JOSHUA TREE JUDGING**



"FESTIVAL OF LIGHTS"

NANCY SPEAKER, QPSA (USA)

PID Mono Human-Made Objects

Image No: 218

2021 COACHELLA INTERNATIONAL EXHIBITION OF PHOTOGRAPHY
JOSHUA TREE JUDGING



“GOLD RECORDS NASHVILLE”

NANCY SPEAKER, QPSA (USA)

PID Mono Human-Made Objects

Image No: 219

2021 COACHELLA INTERNATIONAL EXHIBITION OF PHOTOGRAPHY
JOSHUA TREE JUDGING



HM

“HOLLY 79”

NANCY SPEAKER, QPSA (USA)

PID Mono General

Image No: 220

**2021 COACHELLA INTERNATIONAL EXHIBITION OF PHOTOGRAPHY
JOSHUA TREE JUDGING**



“SEATTLE”

NANCY SPEAKER, QPSA (USA)

PID Mono General

Image No: 221

**2021 COACHELLA INTERNATIONAL EXHIBITION OF PHOTOGRAPHY
JOSHUA TREE JUDGING**



"SNOW QUEEN"

NANCY SPEAKER, QPSA (USA)

PID Mono General

Image No: 222

**2021 COACHELLA INTERNATIONAL EXHIBITION OF PHOTOGRAPHY
JOSHUA TREE JUDGING**



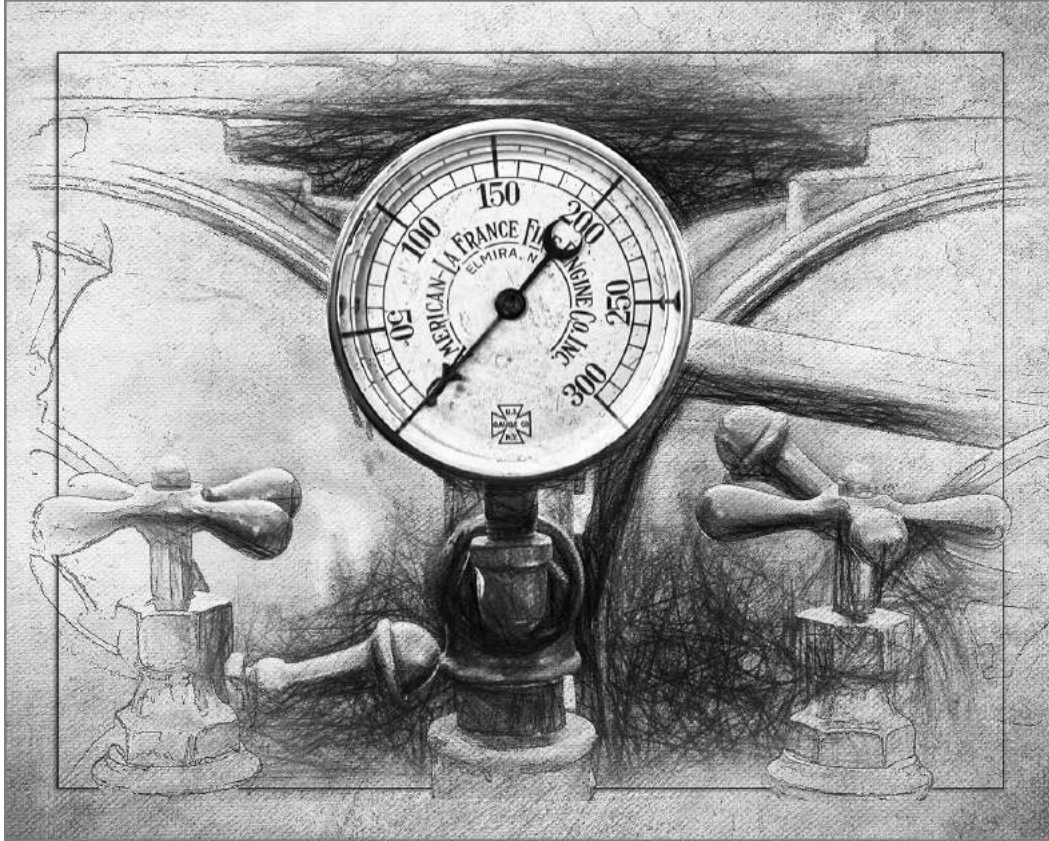
"STRIPES"

NANCY SPEAKER, QPSA (USA)

PID Mono General

Image No: 223

**2021 COACHELLA INTERNATIONAL EXHIBITION OF PHOTOGRAPHY
JOSHUA TREE JUDGING**



“FIRE ENGINE GAUGE-07B ALT”

PAUL SPEAKER, PPSA (USA)

PID Mono General

Image No: 224

**2021 COACHELLA INTERNATIONAL EXHIBITION OF PHOTOGRAPHY
JOSHUA TREE JUDGING**



“MCDONALD OBSERVATORY-02B”

PAUL SPEAKER, PPSA (USA)

PID Mono Human-Made Objects

Image No: 225

**2021 COACHELLA INTERNATIONAL EXHIBITION OF PHOTOGRAPHY
JOSHUA TREE JUDGING**



HM

“SCRM ENGINE DRIVER DETAIL-05B”

PAUL SPEAKER, PPSA (USA)

PID Mono Human-Made Objects

Image No: 226

**2021 COACHELLA INTERNATIONAL EXHIBITION OF PHOTOGRAPHY
JOSHUA TREE JUDGING**



PSA Best of Show Gold

“VALVE AND GEAR TEETH AGSM-31B”

PAUL SPEAKER, PPSA (USA)

PID Mono Human-Made Objects

Image No: 227

**2021 COACHELLA INTERNATIONAL EXHIBITION OF PHOTOGRAPHY
JOSHUA TREE JUDGING**



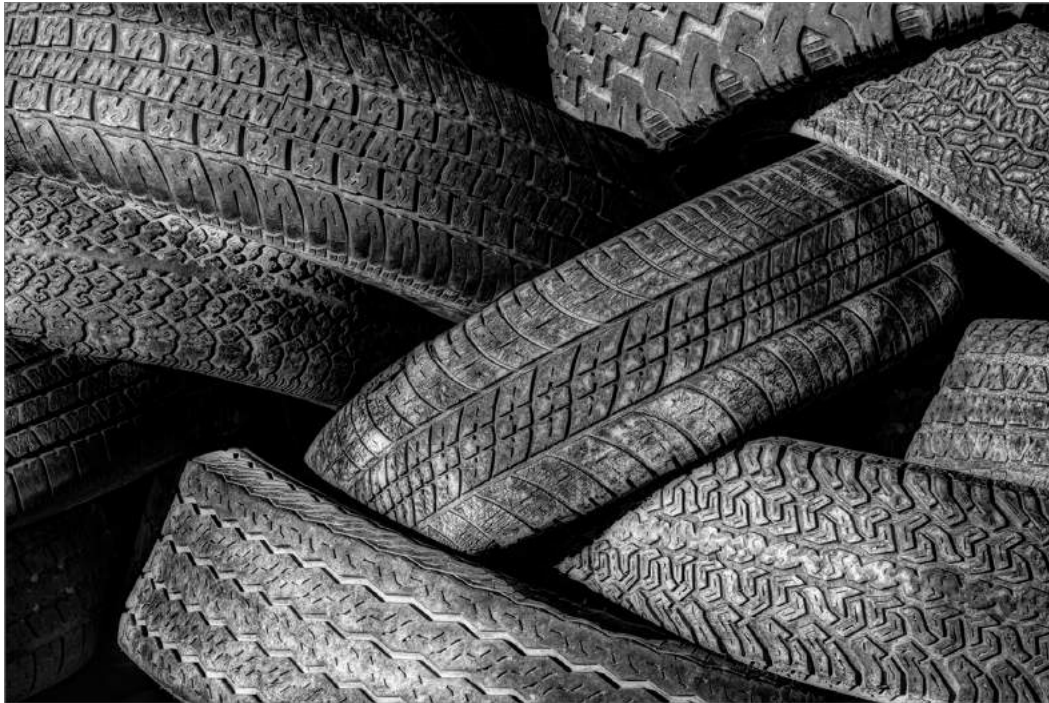
“KANSAS WHEATFIELD 882”

WILLIAM STILL, EPSA (USA)

PID Mono General

Image No: 228

**2021 COACHELLA INTERNATIONAL EXHIBITION OF PHOTOGRAPHY
JOSHUA TREE JUDGING**



“WORN”

WILLIAM STILL, EPSA (USA)

PID Mono Human-Made Objects

Image No: 229

**2021 COACHELLA INTERNATIONAL EXHIBITION OF PHOTOGRAPHY
JOSHUA TREE JUDGING**



"GHOST BRIDE 1"

LEE ENG TAN, PPSA (SINGAPORE)

PID Mono General

Image No: 230

**2021 COACHELLA INTERNATIONAL EXHIBITION OF PHOTOGRAPHY
JOSHUA TREE JUDGING**



"PRAVEENA 3"

LEE ENG TAN, PPSA (SINGAPORE)

PID Mono General

Image No: 231

**2021 COACHELLA INTERNATIONAL EXHIBITION OF PHOTOGRAPHY
JOSHUA TREE JUDGING**



"FIRST SNOW"

DIAHANN TANKE (USA)

PID Mono General

Image No: 232

**2021 COACHELLA INTERNATIONAL EXHIBITION OF PHOTOGRAPHY
JOSHUA TREE JUDGING**



“RUSTIC CANS”

CAROLYN TODD-LARSON, QPSA (USA)

PID Mono Human-Made Objects

Image No: 233

**2021 COACHELLA INTERNATIONAL EXHIBITION OF PHOTOGRAPHY
JOSHUA TREE JUDGING**



“THE HOUSE THAT JERRY BUILT DALLAS”

CAROLYN TODD-LARSON, QPSA (USA)

PID Mono General

Image No: 234

**2021 COACHELLA INTERNATIONAL EXHIBITION OF PHOTOGRAPHY
JOSHUA TREE JUDGING**



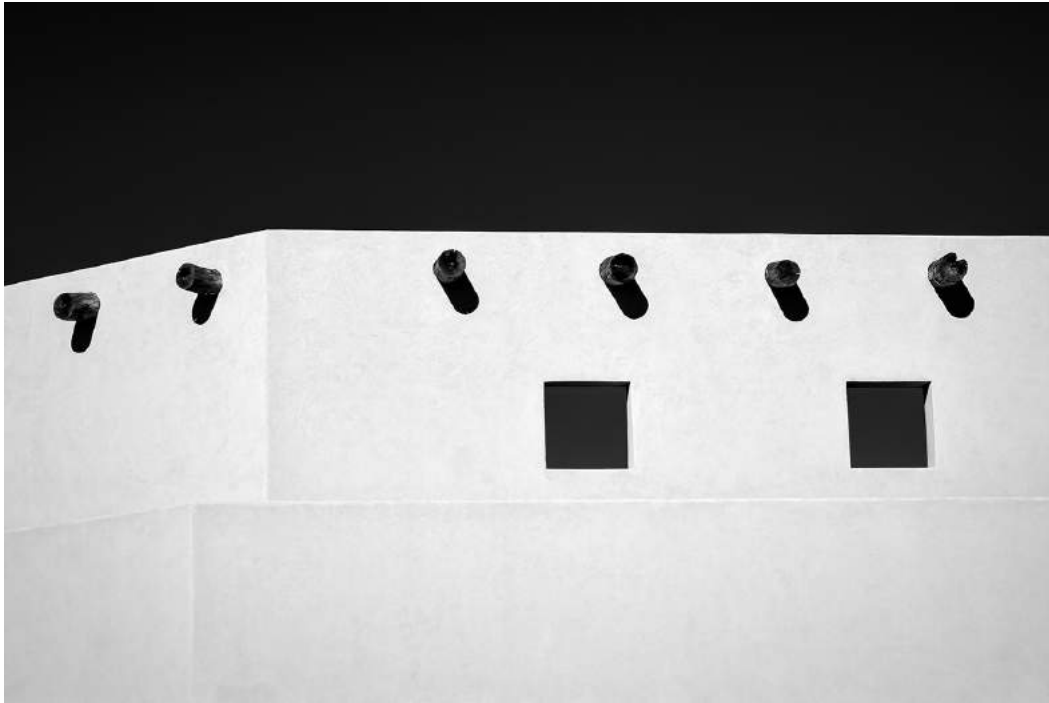
“RIO BRIDGE”

DIMITRIS TOUSSIMIS, PPSA (GREECE)

PID Mono General

Image No: 235

**2021 COACHELLA INTERNATIONAL EXHIBITION OF PHOTOGRAPHY
JOSHUA TREE JUDGING**



“SOUTHWESTERN FACADE”

INGE VAUTRIN, PPSA (USA)

PID Mono General

Image No: 236

**2021 COACHELLA INTERNATIONAL EXHIBITION OF PHOTOGRAPHY
JOSHUA TREE JUDGING**



“ANCIENT SWEDISH FARMERS HUT”

JAMES WAT (USA)

PID Mono General

Image No: 237

**2021 COACHELLA INTERNATIONAL EXHIBITION OF PHOTOGRAPHY
JOSHUA TREE JUDGING**



“TREPPENLICHT”

CLAUDIA WELLER, PPSA, AFIAP (GERMANY)

PID Mono General

Image No: 238

**2021 COACHELLA INTERNATIONAL EXHIBITION OF PHOTOGRAPHY
JOSHUA TREE JUDGING**



“DISNEY HALL LINES AND SHAPES”

LARRY WHITE (USA)

PID Mono General

Image No: 239

**2021 COACHELLA INTERNATIONAL EXHIBITION OF PHOTOGRAPHY
JOSHUA TREE JUDGING**



"OLD DESOTO"

LARRY WHITE (USA)

PID Mono Human-Made Objects

Image No: 240

**2021 COACHELLA INTERNATIONAL EXHIBITION OF PHOTOGRAPHY
JOSHUA TREE JUDGING**



"THE MARINER 5949"

DAVID WILKINS (USA)

PID Mono Human-Made Objects

Image No: 241

**2021 COACHELLA INTERNATIONAL EXHIBITION OF PHOTOGRAPHY
JOSHUA TREE JUDGING**



"A DEVOUT NATION"

YUET YEE WONG, EPSA (HONG KONG)

PID Mono General

Image No: 242

2021 COACHELLA INTERNATIONAL EXHIBITION OF PHOTOGRAPHY
JOSHUA TREE JUDGING



HM

“FIGHT FOR SPACE”

YUET YEE WONG, EPSA (HONG KONG)

PID Mono General

Image No: 243

2021 COACHELLA INTERNATIONAL EXHIBITION OF PHOTOGRAPHY
JOSHUA TREE JUDGING



“BLUE SWALLOW MOTEL”

ANNE WOODINGTON (GUERNSEY)

PID Mono General

Image No: 244

**2021 COACHELLA INTERNATIONAL EXHIBITION OF PHOTOGRAPHY
JOSHUA TREE JUDGING**



"FISHING IN THE MIST"

ANNE WOODINGTON (GUERNSEY)

PID Mono General

Image No: 245

**2021 COACHELLA INTERNATIONAL EXHIBITION OF PHOTOGRAPHY
JOSHUA TREE JUDGING**



“OLD AND FORGOTTEN”

ANNE WOODINGTON (GUERNSEY)

PID Mono General

Image No: 246

2021 COACHELLA INTERNATIONAL EXHIBITION OF PHOTOGRAPHY
JOSHUA TREE JUDGING



HM

“STORMY CLOUDS”

ANNE WOODINGTON (GUERNSEY)

PID Mono General

Image No: 247

2021 COACHELLA INTERNATIONAL EXHIBITION OF PHOTOGRAPHY

JOSHUA TREE JUDGING



“THE JEWISH COMMUNITY19”

DANLEI YE, GMPSA, GPSA (CANADA)

PID Mono General

Image No: 248

2021 COACHELLA INTERNATIONAL EXHIBITION OF PHOTOGRAPHY
JOSHUA TREE JUDGING



“SALIVATING”

JIANMIN ZHANG (CHINA)

PID Mono General

Image No: 249

**2021 COACHELLA INTERNATIONAL EXHIBITION OF PHOTOGRAPHY
JOSHUA TREE JUDGING**



HM

“TO FEEL ATTACHMENT TO SOMEONE”

JIANMIN ZHANG (CHINA)

PID Mono General

Image No: 250

2021 COACHELLA INTERNATIONAL EXHIBITION OF PHOTOGRAPHY
JOSHUA TREE JUDGING



“WIND”

OUFEI ZHAO (CHINA)

PID Mono General

Image No: 251

**2021 COACHELLA INTERNATIONAL EXHIBITION OF PHOTOGRAPHY
JOSHUA TREE JUDGING**

