



# 2018 COACHELLA INTERNATIONAL EXHIBITION OF PHOTOGRAPHY

## CATALOG

### PID COLOR DIVISION

<http://www.coachella-ex.org/>

*Recognized by the Photographic Society of America*

#### INSTRUCTIONS:

Download catalog to a convenient place on your computer (e.g., your desktop)

Best opened with Adobe Acrobat or Adobe Acrobat Pro.

For navigational ease, make sure that Acrobat tools are visible. Depending on the version, this can normally be achieved with View>Tools.

The catalog opens in Adobe with thumbnails of the pages to the left. You may have to reveal the thumbnails with other PDF viewers.

There is an index at the front with page numbers for each of the image titles. Slide through the thumbnails to find a particular page. Or use the Acrobat Go To Page tool at the top (if visible). You can scroll through the images using the up/down arrows on your keyboard.

All copyrights in all posted images accessible through this catalog remain vested with the original makers (authors) of the images. All use, copying, or republishing without permission of the maker is prohibited, except for downloading the images directly from this document or website for viewing purposes.



## 2018 COACHELLA INTERNATIONAL EXHIBITION OF PHOTOGRAPHY

*Recognized by the  
Photographic Society of America*

**T**he sponsors of this International Exhibition of Photography have been awarded Recognition by PSA, the world's largest patron of international photographic exhibitions. PSA, although it has provided Recognition, is neither a sponsor nor directly involved in the operation of this exhibition.



Valid acceptances received by PSA Members in recognized sections of this exhibition are eligible for PSA Star Ratings, listing in the world-wide PSA Who's Who of Photography and credited towards the PSA Distinctions of PPSA, EPSA, MPSA, GMPSA, GMPSA/b, GMPSA/s, GMPSA/g, and GMPSA/p.

PSA is a non-profit organization promoting the advancement of photography in all its forms to novice, amateur and professional photographers world wide.

For information on membership and the many services and activities of PSA contact:

**psa**

PHOTOGRAPHIC SOCIETY OF AMERICA  
8341 S. Walker Avenue, Suite 104  
Oklahoma City, OK 73139-9401, U.S.A.  
E-mail: [hq@psa-photo.org](mailto:hq@psa-photo.org)  
Web Site: <http://www.psa-photo.org>

**2018 COACHELLA INTERNATIONAL EXHIBITION OF PHOTOGRAPHY  
PID COLOR DIVISION**

Exhibition Chair: Stuart Lynn, APSA, HonS4C, DFS4C

Division Chair: *Stuart Lynn, APSA, HonS4C, DFS4C*



**Judges**

**J.R. Schnelzer, APSA, PPSA**

**Nancy Speaker, QPSA, AS4C**

**Joanne Stolte, FPSA, MPSA, EFIAP, HonS4C, DFS4C**

**AWARDS**



**SECTION PID COLOR GENERAL**

Page

**PSA BEST OF SHOW GOLD**

**BRIAN DOWDALL (UNITED KINGDOM): 'LITTLE DUTCH GIRL'**

82

**CVDCC GOLD**

**FREDERICK EMCH (USA): 'LEADING LINES'**

89

**CVDCC SILVER**

**DMITRIY BELYAEV (RUSSIAN FEDERATION): 'LADY AND HORSE'**

20

**PETER CURCIS (USA): 'GREAT GRAY HUNTING IN SNOW'**

71

**CVDCC BRONZE**

**LAURA LEE BARTHOLOMEW (USA): 'BELVEDERE HOUSE'**

16

**JAN HANDMAN (USA): 'MOMENT OF ZEN'**

109

**LEE ENG TAN (SINGAPORE): 'XIAPU FISHING NET'**

261

**JUDGE'S CHOICE**

**JAN HANDMAN (USA): 'IN THE LAND OF NOD'**

108

**DENISE SALDANA (USA): 'BANTAM BEACH ROOSTER'**

219

**MARCY STARNES (USA): 'LION KING'**

246

**SECTION PID COLOR THEME - FLOWER(S)**

Page

**PSA BEST OF SHOW GOLD**

**JENNI HORSNELL, GMPA (AUSTRALIA): 'FADED LILIES'**

120

**CVDCC GOLD**

**DEBORAH SEIBLY (USA): 'MATILIJA POPPY'**

233

**CVDCC SILVER**

**JENNI HORSNELL, GMPA (AUSTRALIA): 'SOFT IRISES'**

123

**DEE MCMILLAN (USA): 'MORE TULIPS'**

174

**CVDCC BRONZE**

**JENNI HORSNELL, GMPA (AUSTRALIA): 'WHITE LILIES'**

124

**HOLLY MOORE, PPSA (USA): 'LOTUS FLOWER ON BLACK'**

183

**DENISE SALDANA (USA): 'BLUE CHIFFON'**

220

**JUDGE'S CHOICE**

**BOB BENSON, APSA (USA): 'UNOPENED COLUMBINE'**

27

**NAN CARDER, APSA, MPSA (USA): 'LOTUS 3986'**

48

**HOLLY MOORE, PPSA (USA): 'PINK CONE FLOWER'**

185



# 2018 Coachella International Exhibition of Photography

## PID COLOR DIVISION ACCEPTANCES INDEX



PCG=PID Color General ; PCT=PID Color Theme

	Page		Page
<b>AIROV-BIELING, SHIRL (USA)</b>		<b>BUTLER, DAVID, EPSA (ENGLAND)</b>	
PCT BIRDS OF PARADISE	9	PCG MADAME	41
PCG FLYING HIGH	10	<b>CAMERON, KIM (USA)</b>	
PCT PINK WHITE ROSE	11	PCT COLORFUL CALLA LILLIES (HM)	42
PCT PURPLE VIOLET IRIS	12	PCT PLUMERIA QUARTET	43
PCT SAFFRON ROSE	13	PCT TULIP REFLECTIONS	44
<b>AN, XIPING (CHINA)</b>		<b>CARDER, NAN, APSA, MPSA (USA)</b>	
PCG DAM LATE AUTUMN	14	PCT CALIFORNIA POPPY 9801 (HM)	45
<b>ARIAS, OSCAR (USA)</b>		PCG FLAMINGO 9210	46
PCG GUATEMALAN LADDER	15	PCG GREAT EGRET 1824	47
<b>BARTHOLOMEW, LAURA LEE (USA)</b>		PCT LOTUS 3986 (JUDGE'S CHOICE)	48
PCG BELVEDERE HOUSE (CVDCC BRONZE)	16	<b>CHAN, H.W., FPSA, GMPA (HONG KONG)</b>	
PCG SEATTLE BLUES (HM)	17	PCG ONLY A PERSON	49
<b>BEISHKE, JOHN (USA)</b>		PCG THE COLOR RUN 18	50
PCG GREEN AND WHITE ORNAMENTAL CABBAGE	18	<b>CHEANG, SHERMAN (MACAU)</b>	
PCT WHITE DAHLIA 2	19	PCT BEAUTIFUL LOTUS	51
<b>BELYAEV, DMITRIY (RUSSIAN FEDERATION)</b>		PCT PINK LOTUS HEART	52
PCG LADY AND HORSE (CVDCC SILVER)	20	<b>CHEN, XINXIN (CHINA)</b>	
<b>BENSON, BOB, APSA (USA)</b>		PCG COUNTRY LIFE8	53
PCT BACKLIT FLOWER	21	<b>CHEUNG, KOON NAM, MPSA (HONG KONG)</b>	
PCG BAHAI TEMPLE AT NIGHT COLOR	22	PCG HAWK OWL A04 (HM)	54
PCT BLEEDING HEARTS (HM)	23	PCG OSPREY FISH CATCHING 04	55
PCT LOTUS	24	PCG SNOWY OWL A03	56
PCG RESTING FOR NOW	25	<b>CLARK, PETER, APSA, MPSA (UNITED KINGDOM)</b>	
PCG SUNSET ON THE PALOUSE	26	PCG APPROACHING STORM EILEAN DONAN	57
PCT UNOPENED COLUMBINE (JUDGE'S CHOICE)	27	<b>CLORAN, RICHARD, HONPSA, MPSA (USA)</b>	
<b>BENSON, PEGGY (USA)</b>		PCG BLIZZARD BISON	58
PCG ARCHES AND STAIRS	28	PCG PITTSBURGH AT NIGHT 2017	59
PCT RAINDROPS ON PETALS	29	<b>CLOSE, CARL, MPSA (USA)</b>	
PCG REFLECTIONS AT KINDERDIJK	30	PCT ORANGE TRIO	60
<b>BORMANN, STAN, APSA, EPSA (USA)</b>		<b>CLOUSER, HOLLY KIRKLAND (USA)</b>	
PCT RED ARGENTINE 1307	31	PCT DYNAMIC BLOOMS	61
PCG SYNCHRONIZED FLIGHT 0797	32	PCT FALLEN BLOSSOM	62
<b>BRETT, BEVERLY (USA)</b>		PCG VITALITY	63
PCT PRETTY ONE	33	<b>COLLIER, JAMES (USA)</b>	
PCT SPLENDOR	34	PCT MOSTLY YELLOW ROSES	64
<b>BROCK, KIMBERLY, PPSA (USA)</b>		<b>CONAWAY, WARD, PPSA (USA)</b>	
PCT PINK DAISY MUMS 3	35	PCT PINK LADY SLIPPER 2017 NO2	65
PCT SOFT BRIGHT RED TULIPS	36	<b>COOK, HELEN (NEW ZEALAND)</b>	
<b>BROWN, D. TYNER, EPSA (USA)</b>		PCT HYDRANGEA	66
PCT ROSE PARADISE	37	PCT TULIP EL NINO	67
PCT ROSE TIFFANY	38	PCG UP CLOSE AND PERSONAL	68
<b>BROWN, DONALD, APSA, PPSA (USA)</b>		PCT YELLOW TULIP	69
PCG ELAKALA FALLS 1020 (HM)	39	<b>CURCIS, PETER (USA)</b>	
PCG NORTH CAROLINA INNER BANKS 2451	40	PCG BURROWING OWLETS	70
		PCG GREAT GRAY HUNTING IN SNOW (CVDCC SILVER)	71





# 2018 Coachella International Exhibition of Photography

## PID COLOR DIVISION ACCEPTANCES INDEX



PCG=PID Color General ; PCT=PID Color Theme

	Page		Page
PCG SANDHILL FAMILY DINNER	72	<b>GRAY, LEAH (CANADA)</b>	
PCG WESTERN EMERALD (HM)	73	PCG HORSE LATITUDE	106
<b>DAVIS, BRIAN (UNITED KINGDOM)</b>		PCG SOUTHERN RED BISHOP SPEAKS	107
PCT ALLIUM	74	<b>HANDMAN, JAN (USA)</b>	
PCG FROSTED TREES MAMMOTH FALLS	75	PCG IN THE LAND OF NOD (JUDGE'S CHOICE)	108
PCG HONFLEUR (HM)	76	PCG MOMENT OF ZEN (CVDCC BRONZE)	109
PCT TULIP	77	PCG RETRO REWIND	110
<b>DAVIS, SHIRLEY (UNITED KINGDOM)</b>		<b>HENNES, G. MARGARET (USA)</b>	
PCG CYCLIST IN THE WATER	78	PCG BEE ON ORANGE FLOWER	111
<b>DEMETER, JANOS, PPSA (HUNGARY)</b>		PCT PURPLE AND GOLD (HM)	112
PCG COLD NIGHT	79	PCT PURPLE DAHLIA (HM)	113
<b>DOERRIE, JENNIFER (USA)</b>		PCT RED AND YELLOW MUM	114
PCT BLOSSOM SEASON	80	PCG TIGER SWALLOWTAIL	115
<b>DOWDALL, BRIAN (UNITED KINGDOM)</b>		<b>HOCHHAUS, ALEXANDER (GERMANY)</b>	
PCG BANSHEE AND THE ENFORCER	81	PCG PEACH	116
PCG LITTLE DUTCH GIRL (PSA BEST OF SHOW GOLD)	82	<b>HODGES, BILL (NEW ZEALAND)</b>	
PCG PREPERATION (HM)	83	PCG SPARE PARTS	117
<b>EARL, GREG (AUSTRALIA)</b>		<b>HORSNELL, JENNI, GMPSA (AUSTRALIA)</b>	
PCG LAKE LONSDALE	84	PCT DAISIES	118
PCT LOTUS	85	PCG DEWY DAMSELFY 33 (HM)	119
PCG MILFORD SOUND	86	PCT FADED LILIES (PSA BEST OF SHOW GOLD)	120
PCG MYSTIC	87	PCG JENNY WREN WITH ANTS 2	121
<b>EMCH, FREDERICK (USA)</b>		PCG PERFECT BALANCE (HM)	122
PCG GOT MY EYE ON YOU	88	PCT SOFT IRISES (CVDCC SILVER)	123
PCG LEADING LINES (CVDCC GOLD)	89	PCT WHITE LILIES (CVDCC BRONZE)	124
PCT LOTUS	90	<b>HSIONG, YOUMANS (USA)</b>	
PCT MAUI FLOWER	91	PCG GRAND HAVEN LIGHTHOUSE	125
PCT RED TORCH GINGER	92	<b>HU, LIN (CHINA)</b>	
PCT SPIDERWORT	93	PCG BEAN CURD WORKSHOP (HM)	126
PCG WATCHING	94	PCG DURBAR SQUARE	127
<b>FISHER, DAVID I. (USA)</b>		<b>HUANG, HAIYAN (CHINA)</b>	
PCG LUSCIOUS APPLE	95	PCG OLD MAN5	128
<b>FISHER, RICHARD (USA)</b>		PCG THE OLD TEA HOUSE1 (HM)	129
PCG GOLDEN-FRONTED WOODPECKER	96	<b>JENKIN, BARBARA, GMPSA (UNITED KINGDOM)</b>	
PCG PERCHED GREAT GRAY OWL	97	PCG RAINBOW RINGS	130
PCT PRAIRIE SMOKE	98	<b>JENKIN, MALCOLM, GMPSA (UNITED KINGDOM)</b>	
PCG SNARLING WOLF	99	PCG AYL AND CUBE	131
PCG THE JESTER	100	PCG GOLDEN LADY (HM)	132
<b>GALLAGHER, JAMES (USA)</b>		PCG REFLECTED GECKO 2	133
PCG ELIZABETH IN PORTRAIT #1	101	<b>JIAO, SHENGFU (CHINA)</b>	
PCG STORM CLOUDS AND SCHOONERS	102	PCG FIGHT	134
<b>GOLDIN, LEONID (ISRAEL)</b>		PCG PURSUE AND CAPTURE	135
PCG BE SEEN BY MILLION	103	PCG SHEPHERD	136
<b>GOLDSTEIN, ARNIE (USA)</b>		<b>KATSAMPES, ANDREW (USA)</b>	
PCT REACHING OUT	104	PCG BABSON_2016(1488)	137
PCT SNOW BALL	105	PCG STEFFEN_2017(7255)	138



# 2018 Coachella International Exhibition of Photography

## PID COLOR DIVISION ACCEPTANCES INDEX



PCG=PID Color General ; PCT=PID Color Theme

	Page		Page
<b>KENNEDY, FRANCIS, EPSA (AUSTRALIA)</b>		<b>MATTUCHIO, LESLEY (USA)</b>	
PCT ORANGE BEGONIA	139	PCG GREEN JAY	170
PCT PEONY ROSE	140	PCG LITTLE BLUE HERON	171
PCT PINK BEGONIA	141	<b>MCMILLAN, DEE (USA)</b>	
<b>KOH, YEOKKIAN (MALAYSIA)</b>		PCG BRONZE PHALEONOPSIS	172
PCG DELICIOUS 6	142	PCT DAHLIA ORANGE CRINKLES	173
<b>KRAMER, IRENE (USA)</b>		PCT MORE TULIPS (CVDCC SILVER)	174
PCG BUCKEYES ON LOOSESTRIFE	143	PCT THREE RED VS TWO	175
PCT DAHLIA - HOTSHOT (HM)	144	PCG THREE WHITE TULIPS COLOR (HM)	176
PCT YELLOW LADY'S SLIPPER	145	<b>MEISENHEIMER, DAVID, FPSA, GMPA (USA)</b>	
<b>KUEBLER, BARBARA, APSA, MPSA (USA)</b>		PCG POLAR BEAR DISCUSSION	177
PCT PINK LOTUS	146	PCG SHUKSAN IN GLORY	178
<b>KUO, CHUN CHENG (TAIWAN)</b>		<b>MILLER, NEIL (USA)</b>	
PCG WHOSE FEATHERS OF OSPREY	147	PCG ALL TIED UP (HM)	179
<b>LEE, JAN, FPSA, EPSA (USA)</b>		PCG EARLY MORN AT BARKER DAM	180
PCG PUT OUT TO PASTURE	148	PCG MOUNTAIN BLUEBIRD	181
PCT SUNFLOWER	149	<b>MOORE, HOLLY, PPSA (USA)</b>	
PCG TWO FOR DINNER	150	PCT A POPPY FOR PAM	182
<b>LEUNG, WING CHUNG KENNETH, PPSA (HONG KONG)</b>		PCT LOTUS FLOWER ON BLACK (CVDCC BRONZE)	183
PCG HARD WORKING	151	PCG ONE WAY	184
PCG ROW THE BOAT	152	PCT PINK CONE FLOWER (JUDGE'S CHOICE)	185
PCG YOUNG MONKS STUDYING	153	<b>MORGAN, PETER (UNITED KINGDOM)</b>	
<b>LEWIS, WILLIAM (USA)</b>		PCG JODIE	186
PCT CACTUS IN MORNING LIGHT	154	<b>MURPHY, KEN, APSA, EPSA (USA)</b>	
PCG KICKING OFF THE BOOTS	155	PCG MILKY WAY AND SNAG	187
PCG PALOUSE FROM STEPTOE BUTTE	156	<b>MUSKOVAC, MATTHEW, APSA, PPSA (USA)</b>	
PCT THREE DAISIES	157	PCG DANDELION 3	188
PCG YELLOW SULPHUR	158	<b>NAGEL, JUDITH (USA)</b>	
<b>LUO, JINGRU, PPSA (USA)</b>		PCG GROSBEAK IN SNOW (HM)	189
PCG DRAGON (HM)	159	<b>NEMEROFF, IRA, MPSA (USA)</b>	
<b>LYNCH, CINDY (USA)</b>		PCG CORTONA-PIENZA 61	190
PCG BOATS AND BRIDGE	160	PCT FLOWER 142	191
PCG COCOA CUP AND PEARLS	161	<b>NGUYEN, HUONG HOA (USA)</b>	
PCG SKATES AND KEY	162	PCT BEE AND SUNFLOWER	192
<b>MAGOR, DIANA, MPSA (UNITED KINGDOM)</b>		PCT FULL BLOOM LOTUS A12 (HM)	193
PCG CARA	163	<b>OSWALD, KRISTINA (USA)</b>	
PCT PROTEUS FLOWER	164	PCT BASKET OF ROSES	194
<b>MAHONEY, JAMES, APSA, EPSA (USA)</b>		PCG GROUP OF THREE	195
PCG 1 HOT MAMMA IN JEANS AND HAT	165	PCT IN THE CAN	196
<b>MAHONEY, ROSALIE (USA)</b>		PCT RED ROSES ANDWINE	197
PCG FOLLY BEACH SUNRISE	166	<b>PAPULIS, RAY (AUSTRALIA)</b>	
PCG MORAINES LAKE 2	167	PCG SEAROAD 3	198
<b>MARCUS, MICHAEL (USA)</b>		<b>PIZZANO, ROBERT (USA)</b>	
PCG DUNES OF MONUMENT VALLEY	168	PCG CLASH OF THE TITANS	199
<b>MASLIN, DAVID M, EPSA (UNITED KINGDOM)</b>		PCG LUNAR ECLIPSE OVER SEATTLE (HM)	200
PCG CHLOE 76	169	PCG MOTOCROSS FLYING DIRT	201



# 2018 Coachella International Exhibition of Photography

## PID COLOR DIVISION ACCEPTANCES INDEX



PCG=PID Color General ; PCT=PID Color Theme

	Page		Page
<b>PLUZHNIKOV, NATALYA, PPSA (USA)</b>		<b>SHACKELFORD, SCOTT (USA)</b>	
PCG ELK FIGHT	202	PCT WILD POPPIES REACHING SKYWARD	235
PCT GLOWING LOTUS BLOSSOM	203	<b>SHAW, SAMUEL G, FPSA, MPSPA (USA)</b>	
PCG PEACEFUL MORNING IN DISKO BAY	204	PCG LEAVES IN ICE	236
PCG ZEBRAS DRINKING NEW VERSION	205	<b>SIU, MIRANDA (CANADA)</b>	
<b>PRISLIPSKY, SHARON (USA)</b>		PCG ROLLING WAVES	237
PCT STAR OF BETHLEHEM	206	<b>SMALLEGANGE, ANN, PPSA (AUSTRALIA)</b>	
PCG THE RIVER RUNS THROUGH IT	207	PCG ALERT WATER DRAGON	238
PCG WEATHERED (HM)	208	PCG LACEWING NO 15	239
<b>PUSTELNIK, BIRGIT, PPSA (GERMANY)</b>		PCT TULIPS ORANGE ROWS	240
PCG FIRST FROST	209	PCG WORKING LATE	241
PCG FOG AND FROST (HM)	210	<b>ST PIERRE SOWELL, LISA (USA)</b>	
PCT FOREST EDGE	211	PCG A FLY FISHING MEMORY (HM)	242
PCT PULSATILLA SUNDOWN	212	PCT HUDSON LILY	243
PCT WOOD ANEMONES	213	<b>STAKE, JAN-THOMAS, GMPSPA (SWEDEN)</b>	
<b>ROSENGREN, ERIK, APSA, PPSA (USA)</b>		PCG BONGELINE 7109	244
PCG GLADE CREEK GRIST MILL	214	PCG BONGELINE TAKING A BATH	245
<b>RUNYAN, TRUDY, EPSA (USA)</b>		<b>STARNES, MARCY (USA)</b>	
PCT LOVELY PINK DAHLIA	215	PCG LION KING (JUDGE'S CHOICE)	246
PCT ORANGE AND YELLOW DAHLIA	216	PCG SUNRISE AT WHITE POCKET	247
PCT YELLOW DAHLIA	217	PCG YOSEMITE FALLS AT NIGHT	248
<b>SADEK, STEPHANEE (USA)</b>		<b>SULOEV, ALEXEY, PPSA (RUSSIAN FEDERATION)</b>	
PCT LADY SLIPPER	218	PCG AMERICAN LANDSCAPE	249
<b>SALDANA, DENISE (USA)</b>		PCG NORTHERN AURORA	250
PCG BANTAM BEACH ROOSTER (JUDGE'S CHOICE)	219	<b>SUN, SAMUEL (USA)</b>	
PCT BLUE CHIFFON (CVDCC BRONZE)	220	PCG CEMETERY OWL	251
PCG DEFENDING TERRITORY	221	<b>TABORDA, JOAO, PPSA (PORTUGAL)</b>	
PCT ENDLESS SUMMER DAHLIA	222	PCG SUNSET IN GOLDEN RIVER	252
PCT PAS DE DEUX	223	PCG THE NIGHT TRAIN	253
<b>SAMOYALT, GUY B., APSA, GMPSPA (FRANCE)</b>		PCG YOUNG FUN	254
PCG CASA DEO BEPI SUA	224	<b>TAM, KAM CHIU (CANADA)</b>	
<b>SCHREIBER, ELLA (USA)</b>		PCG HALT AND FALL (HM)	255
PCT MUMS	225	PCG HORSE IN AIR (HM)	256
PCT YELLOW ROSE	226	PCG ONTARIO PARIS RODEO	257
PCT YELLOW TIGER LILY	227	PCG WRESTLING WITH CALF	258
<b>SCHWEDEN, WOLFGANG, GMPSPA (GERMANY)</b>		<b>TAN, LEE ENG (SINGAPORE)</b>	
PCG SPIEL MIT LICHT UND SCHATTEN 4 C	228	PCG CIRCULAR XIAPU NETS	259
PCG VINTAGE 1 C	229	PCG KACHIN COUPLE SONG MARKING	260
<b>SCOTT, JEANNE (USA)</b>		PCG XIAPU FISHING NET (CVDCC BRONZE)	261
PCG MILKY WAY WITH YUCCAS 7407	230	<b>TEH, TOMMY, PPSA (MALAYSIA)</b>	
PCG SHIRLEY LAUGHS AT THE MILKY WAY	231	PCG GOTCHA 17	262
<b>SEIBLY, DEBORAH (USA)</b>		<b>TEUSCHEL, PETER (GERMANY)</b>	
PCT CACTUS FLOWER WITH A TWIST	232	PCG BUTTERFLY	263
PCT MATILIJA POPPY (CVDCC GOLD)	233	PCG CALIGO (HM)	264
PCT SPLENDOR IN THE GRASS	234	<b>THOMPSON, LYNN, FPSA, EPSA (USA)</b>	
		PCT FLOWERS AT BONITO PARK	265



## 2018 Coachella International Exhibition of Photography

### PID COLOR DIVISION ACCEPTANCES INDEX



PCG=PID Color General ; PCT=PID Color Theme

	Page	Page
PCG RUFUS HUMMER READY TO FEED	266	
PCT SPRING BLOSSOM (HM)	267	
<b>TO, NGOCAN (USA)</b>		
PCG MENDING FISH NET	268	
<b>VU, KIEU-HANH (USA)</b>		
PCT DAHLIA FANTASIA	269	
PCG GET MESSY WITH COLORS	270	
<b>WADE, ALAN (UNITED KINGDOM)</b>		
PCG EYES ON THE BALL	271	
PCG IN THE POTTING SHED	272	
PCG KHAI RIELY-LE BORG	273	
<b>WAN, YI, MPSA (CHINA)</b>		
PCG ATTENTION	274	
PCG MONKEY 78	275	
PCG XIAPU MARINE CULTURE	276	
<b>WARNAKULASURIYA, SUNIL (SRI LANKA)</b>		
PCT WHITE LILY	277	
<b>WAT, JAMES (USA)</b>		
PCT OH GEE I DROP OFF A PIECE	278	
<b>WAY, ALICE MARIE (USA)</b>		
PCT CACTUS FLOWER	279	
PCT GAZANIA AND BEE	280	
<b>WHITE, JOHN (USA)</b>		
PCT HIBISCUS TRIO 0221	281	
PCT PITCHER AND TULIPS 8992 (HM)	282	
PCT TULIPS AND PITCHER 8993 (HM)	283	
<b>WHITSON, DAVE, APSA, PPSA (USA)</b>		
PCG EMILY DANCING IN THE FOG	284	
<b>WILLEMS, RON (NEW ZEALAND)</b>		
PCG AUTUMN'S END	285	
<b>WOLLEAT, KATHLEEN (USA)</b>		
PCG I FOUND THE LIGHT (HM)	286	
PCG LESTER RIVER	287	
<b>WONG, SHIU GUN, FPSA, EPSA (HONG KONG)</b>		
PCG BEGUILING POSE	288	
<b>YU, JURONG (CHINA)</b>		
PCG IN XIAPU 1	289	
<b>ZHAO, HUAMING (CHINA)</b>		
PCT DREAM TULIP	290	
PCT THE LOTUS FLOWER IS RED	291	
<b>ZUFFO, EMANUELE, PPSA (ITALY)</b>		
PCT COMPOSIZIONE FLOREALE 1	292	
PCT COMPOSIZIONE FLOREALE 2 (HM)	293	



**“BIRDS OF PARADISE”**  
**© SHIRL AIROV-BIELING**  
**2018 Coachella International Exhibition of Photography**  
**PID Color Theme - Flower(s)**

PID Color Page 9

<http://www.coachella-ex.org/>



**“FLYING HIGH”**  
**© SHIRL AIROV-BIELING**  
**2018 Coachella International Exhibition of Photography**  
**PID Color General**





**“PINK WHITE ROSE”**  
**© SHIRL AIROV-BIELING**  
**2018 Coachella International Exhibition of Photography**  
**PID Color Theme - Flower(s)**





**“PURPLE VIOLET IRIS”**  
**© SHIRL AIROV-BIELING**  
**2018 Coachella International Exhibition of Photography**  
**PID Color Theme - Flower(s)**

PID Color Page 12

<http://www.coachella-ex.org/>



**“SAFFRON ROSE”**  
**© SHIRL AIROV-BIELING**  
**2018 Coachella International Exhibition of Photography**  
**PID Color Theme - Flower(s)**



**“DAM LATE AUTUMN”  
© XIPING AN  
2018 Coachella International Exhibition of Photography  
PID Color General**



**“GUATEMALAN LADDER”**  
**© OSCAR ARIAS**  
**2018 Coachella International Exhibition of Photography**  
**PID Color General**

PID Color Page 15

<http://www.coachella-ex.org/>



**“BELVEDERE HOUSE”**  
**© LAURA LEE BARTHOLOMEW**  
**2018 Coachella International Exhibition of Photography**  
**PID Color General**  
**CVDCC Bronze**

PID Color Page 16

<http://www.coachella-ex.org/>





**“SEATTLE BLUES”**  
**© LAURA LEE BARTHOLOMEW**  
**2018 Coachella International Exhibition of Photography**  
**PID Color General**  
**HM**

PID Color Page 17

<http://www.coachella-ex.org/>



**“GREEN AND WHITE ORNAMENTAL CABBAGE”**  
**© JOHN BEISHKE**  
**2018 Coachella International Exhibition of Photography**  
**PID Color General**

PID Color Page 18

<http://www.coachella-ex.org/>





**“WHITE DAHLIA 2”**  
**© JOHN BEISHKE**  
**2018 Coachella International Exhibition of Photography**  
**PID Color Theme - Flower(s)**



**“LADY AND HORSE”**  
**© DMITRIY BELYAEV**  
**2018 Coachella International Exhibition of Photography**  
**PID Color General**  
**CVDCC Silver**

PID Color Page 20

<http://www.coachella-ex.org/>



**“BACKLIT FLOWER”**  
**© BOB BENSON, APSA**  
**2018 Coachella International Exhibition of Photography**  
**PID Color Theme - Flower(s)**

PID Color Page 21

<http://www.coachella-ex.org/>



**“BAHAI TEMPLE AT NIGHT COLOR”  
© BOB BENSON, APSA  
2018 Coachella International Exhibition of Photography  
PID Color General**

PID Color Page 22

<http://www.coachella-ex.org/>



**“BLEEDING HEARTS”**  
**© BOB BENSON, APSA**  
**2018 Coachella International Exhibition of Photography**  
**PID Color Theme - Flower(s)**  
**HM**

PID Color Page 23

<http://www.coachella-ex.org/>



**“LOTUS”**  
**© BOB BENSON, APSA**  
**2018 Coachella International Exhibition of Photography**  
**PID Color Theme - Flower(s)**





**“RESTING FOR NOW”**  
**© BOB BENSON, APSA**  
**2018 Coachella International Exhibition of Photography**  
**PID Color General**

PID Color Page 25

<http://www.coachella-ex.org/>





**“SUNSET ON THE PALOUSE”  
© BOB BENSON, APSA  
2018 Coachella International Exhibition of Photography  
PID Color General**

PID Color Page 26

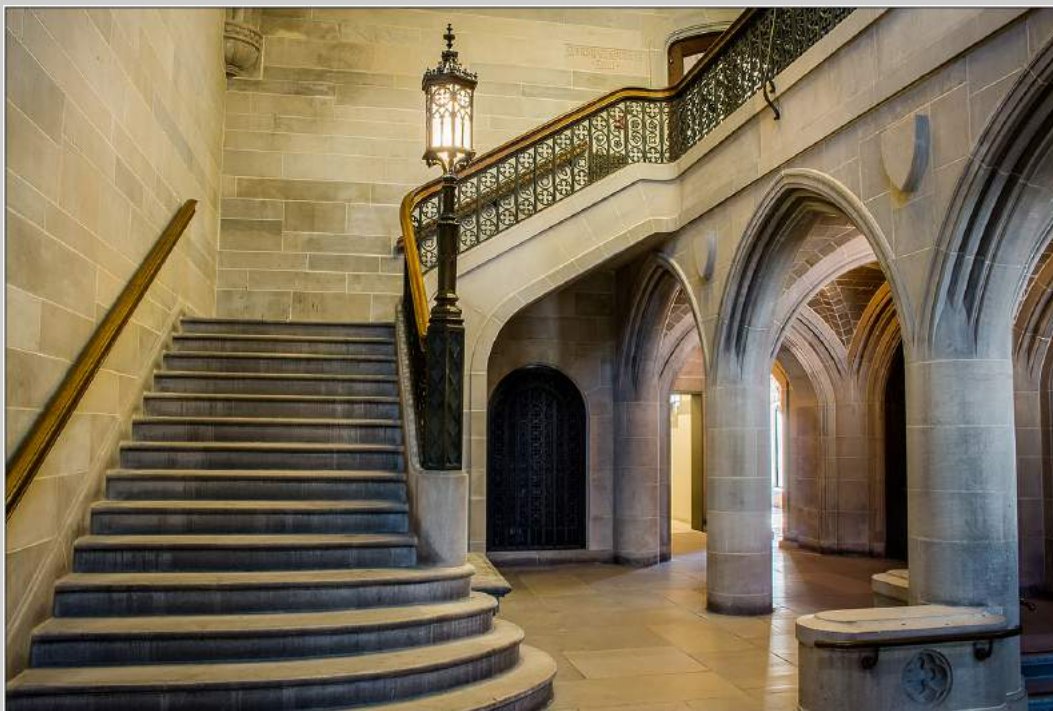
<http://www.coachella-ex.org/>



**“UNOPENED COLUMBINE”**  
**© BOB BENSON, APSA**  
**2018 Coachella International Exhibition of Photography**  
**PID Color Theme - Flower(s)**  
**Judge’s Choice**

PID Color Page 27

<http://www.coachella-ex.org/>



**“ARCHES AND STAIRS”**  
**© PEGGY BENSON**  
**2018 Coachella International Exhibition of Photography**  
**PID Color General**



**“RAINDROPS ON PETALS”**  
**© PEGGY BENSON**  
**2018 Coachella International Exhibition of Photography**  
**PID Color Theme - Flower(s)**

PID Color Page 29

<http://www.coachella-ex.org/>





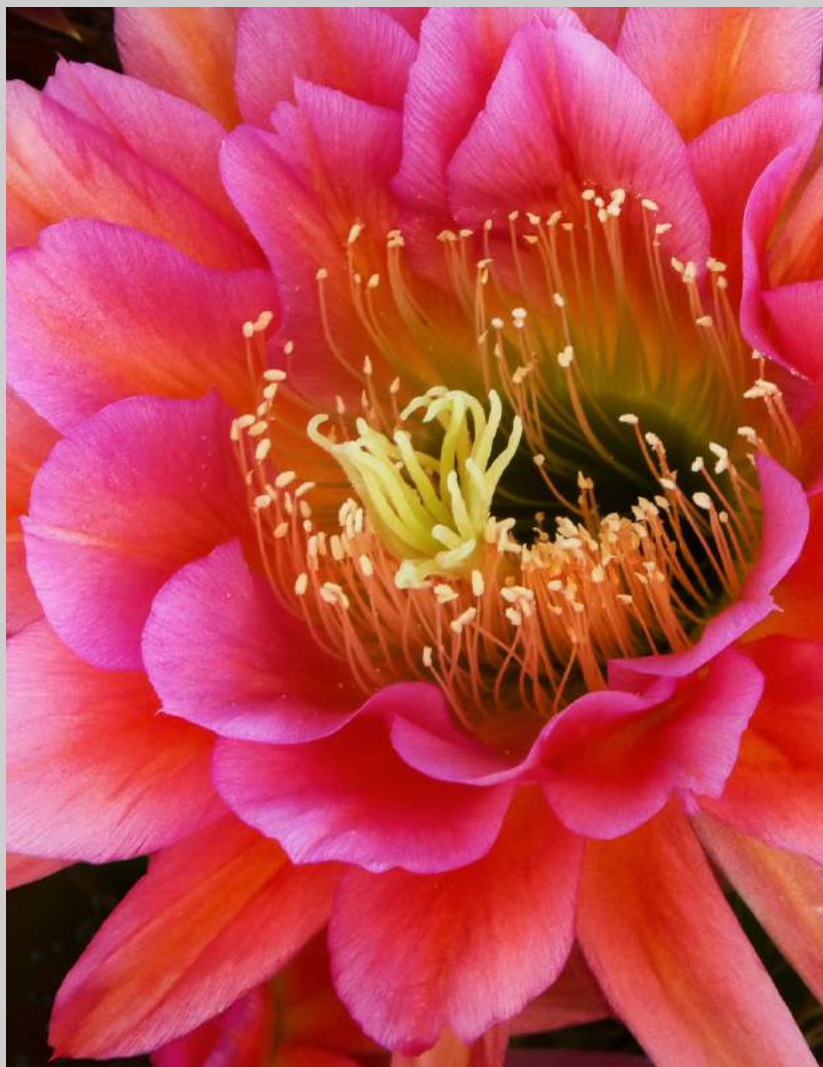
**“REFLECTIONS AT KINDERDIJK”**

**© PEGGY BENSON**

**2018 Coachella International Exhibition of Photography  
PID Color General**

PID Color Page 30

<http://www.coachella-ex.org/>



**“RED ARGENTINE 1307”**  
**© STAN BORMANN, APSA, EPSA**  
**2018 Coachella International Exhibition of Photography**  
**PID Color Theme - Flower(s)**

PID Color Page 31

<http://www.coachella-ex.org/>



**“SYNCHRONIZED FLIGHT 0797”  
© STAN BORMANN, APSA, EPSA  
2018 Coachella International Exhibition of Photography  
PID Color General**

PID Color Page 32

<http://www.coachella-ex.org/>





**“PRETTY ONE”**  
**© BEVERLY BRETT**  
**2018 Coachella International Exhibition of Photography**  
**PID Color Theme - Flower(s)**



**“SPLENDOR”**  
**© BEVERLY BRETT**  
**2018 Coachella International Exhibition of Photography**  
**PID Color Theme - Flower(s)**



**“PINK DAISY MUMS 3”**  
**© KIMBERLY BROCK, PPSA**  
**2018 Coachella International Exhibition of Photography**  
**PID Color Theme - Flower(s)**

PID Color Page 35

<http://www.coachella-ex.org/>



**“SOFT BRIGHT RED TULIPS”**  
**© KIMBERLY BROCK, PPSA**  
**2018 Coachella International Exhibition of Photography**  
**PID Color Theme - Flower(s)**

PID Color Page 36

<http://www.coachella-ex.org/>



**“ROSE PARADISE”**  
**© D. TYNER BROWN, EPSA**  
**2018 Coachella International Exhibition of Photography**  
**PID Color Theme - Flower(s)**





**“ROSE TIFFANY”**  
**© D. TYNER BROWN, EPSA**  
**2018 Coachella International Exhibition of Photography**  
**PID Color Theme - Flower(s)**

PID Color Page 38

<http://www.coachella-ex.org/>



**“ELAKALA FALLS 1020”**  
**© DONALD BROWN, APSA, PPSA**  
**2018 Coachella International Exhibition of Photography**  
**PID Color General**  
**HM**

PID Color Page 39

<http://www.coachella-ex.org/>



**“NORTH CAROLINA INNER BANKS 2451”  
© DONALD BROWN, APSA, PPSA  
2018 Coachella International Exhibition of Photography  
PID Color General**

PID Color Page 40

<http://www.coachella-ex.org/>





**“MADAME”**  
**© DAVID BUTLER, EPSA**  
**2018 Coachella International Exhibition of Photography**  
**PID Color General**

PID Color Page 41

<http://www.coachella-ex.org/>



**“COLORFUL CALLA LILLIES”**  
**© KIM CAMERON**  
**2018 Coachella International Exhibition of Photography**  
**PID Color Theme - Flower(s)**  
**HM**

PID Color Page 42

<http://www.coachella-ex.org/>





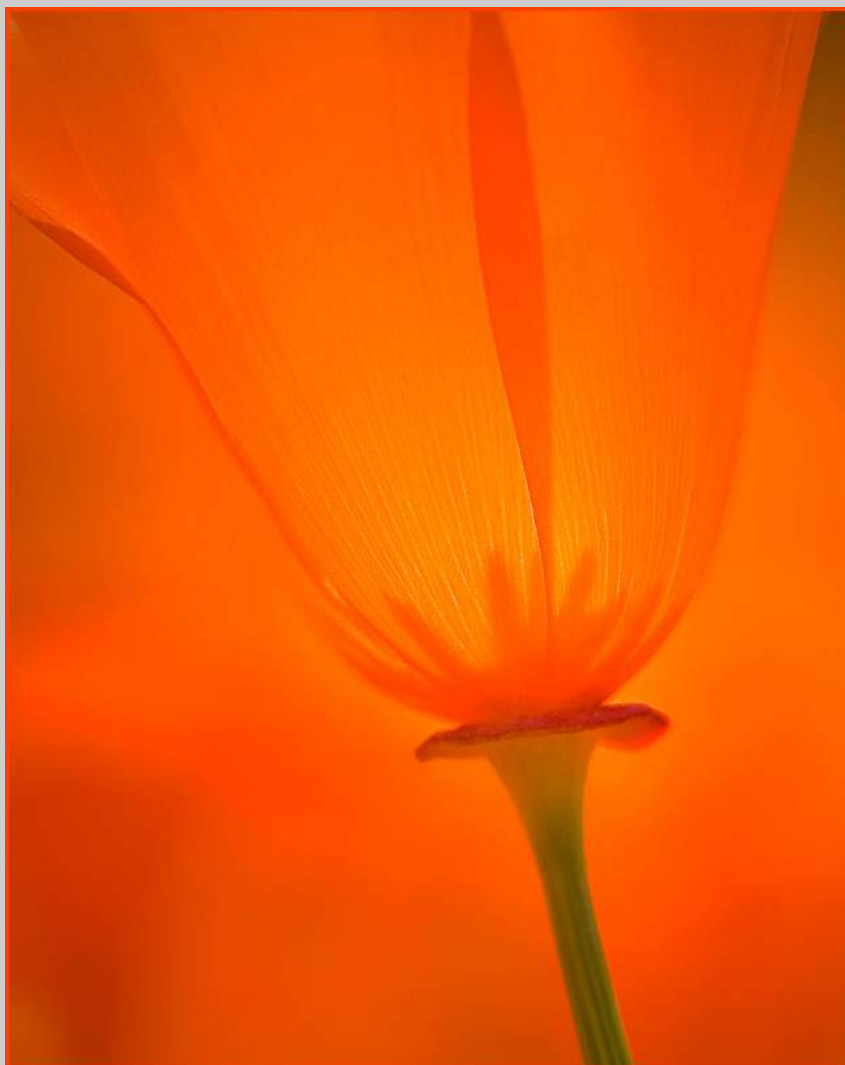
**“PLUMERIA QUARTET”**  
**© KIM CAMERON**  
**2018 Coachella International Exhibition of Photography**  
**PID Color Theme - Flower(s)**



**“TULIP REFLECTIONS”**  
**© KIM CAMERON**  
**2018 Coachella International Exhibition of Photography**  
**PID Color Theme - Flower(s)**

PID Color Page 44

<http://www.coachella-ex.org/>



**“CALIFORNIA POPPY 9801”  
© NAN CARDER, APSA, MPSA  
2018 Coachella International Exhibition of Photography  
PID Color Theme - Flower(s)  
HM**

PID Color Page 45

<http://www.coachella-ex.org/>



**“FLAMINGO 9210”**  
**© NAN CARDER, APSA, MPSA**  
**2018 Coachella International Exhibition of Photography**  
**PID Color General**



**“GREAT EGRET 1824”  
© NAN CARDER, APSA, MPSA  
2018 Coachella International Exhibition of Photography  
PID Color General**

PID Color Page 47

<http://www.coachella-ex.org/>





**“LOTUS 3986”  
© NAN CARDER, APSA, MPSA  
2018 Coachella International Exhibition of Photography  
PID Color Theme - Flower(s)  
Judge’s Choice**

PID Color Page 48

<http://www.coachella-ex.org/>



**“ONLY A PERSON”**  
© H.W. CHAN, FPSA, GMPA  
2018 Coachella International Exhibition of Photography  
PID Color General

PID Color Page 49

<http://www.coachella-ex.org/>



**“THE COLOR RUN 18”  
© H.W. CHAN, FPSA, GMP  
2018 Coachella International Exhibition of Photography  
PID Color General**

PID Color Page 50

<http://www.coachella-ex.org/>





**“BEAUTIFUL LOTUS”**  
**© SHERMAN CHEANG**  
**2018 Coachella International Exhibition of Photography**  
**PID Color Theme - Flower(s)**

PID Color Page 51

<http://www.coachella-ex.org/>



**“PINK LOTUS HEART”  
© SHERMAN CHEANG  
2018 Coachella International Exhibition of Photography  
PID Color Theme - Flower(s)**

PID Color Page 52

<http://www.coachella-ex.org/>





**“COUNTRY LIFE8”**  
**© XINXIN CHEN**  
**2018 Coachella International Exhibition of Photography**  
**PID Color General**

PID Color Page 53

<http://www.coachella-ex.org/>



**“HAWK OWL A04”**  
**© KOON NAM CHEUNG, MPSA**  
**2018 Coachella International Exhibition of Photography**  
**PID Color General**  
**HM**

PID Color Page 54

<http://www.coachella-ex.org/>



**“OSPREY FISH CATCHING 04”  
© KOON NAM CHEUNG, MPSA  
2018 Coachella International Exhibition of Photography  
PID Color General**

PID Color Page 55

<http://www.coachella-ex.org/>



**“SNOWY OWL A03”  
© KOON NAM CHEUNG, MPSA  
2018 Coachella International Exhibition of Photography  
PID Color General**

PID Color Page 56

<http://www.coachella-ex.org/>





**“APPROACHING STORM EILEAN DONAN”  
© PETER CLARK, APSA, MPSA  
2018 Coachella International Exhibition of Photography  
PID Color General**

PID Color Page 57

<http://www.coachella-ex.org/>





**“BLIZZARD BISON”**  
**© RICHARD CLORAN, HONPSA, MPSA**  
**2018 Coachella International Exhibition of Photography**  
**PID Color General**



**“PITTSBURGH AT NIGHT 2017”  
© RICHARD CLORAN, HONPSA, MPSA  
2018 Coachella International Exhibition of Photography  
PID Color General**

PID Color Page 59

<http://www.coachella-ex.org/>



**“ORANGE TRIO”**  
**© CARL CLOSE, MPSA**  
**2018 Coachella International Exhibition of Photography**  
**PID Color Theme - Flower(s)**



**“DYNAMIC BLOOMS”**  
**© HOLLY KIRKLAND CLOUSER**  
**2018 Coachella International Exhibition of Photography**  
**PID Color Theme - Flower(s)**

PID Color Page 61

<http://www.coachella-ex.org/>





**“FALLEN BLOSSOM”**  
**© HOLLY KIRKLAND CLOUSER**  
**2018 Coachella International Exhibition of Photography**  
**PID Color Theme - Flower(s)**

PID Color Page 62

<http://www.coachella-ex.org/>





**“VITALITY”**  
**© HOLLY KIRKLAND CLOUSER**  
**2018 Coachella International Exhibition of Photography**  
**PID Color General**

PID Color Page 63

<http://www.coachella-ex.org/>



**“MOSTLY YELLOW ROSES”  
© JAMES COLLIER  
2018 Coachella International Exhibition of Photography  
PID Color Theme - Flower(s)**

PID Color Page 64

<http://www.coachella-ex.org/>



**“PINK LADY SLIPPER 2017 NO2”  
© WARD CONAWAY, PPSA  
2018 Coachella International Exhibition of Photography  
PID Color Theme - Flower(s)**

PID Color Page 65

<http://www.coachella-ex.org/>





**“HYDRANGEA”**  
**© HELEN COOK**  
**2018 Coachella International Exhibition of Photography**  
**PID Color Theme - Flower(s)**

PID Color Page 66

<http://www.coachella-ex.org/>



**"TULIP EL NINO"**  
**© HELEN COOK**  
**2018 Coachella International Exhibition of Photography**  
**PID Color Theme - Flower(s)**





**“UP CLOSE AND PERSONAL”**  
**© HELEN COOK**  
**2018 Coachella International Exhibition of Photography**  
**PID Color General**

PID Color Page 68

<http://www.coachella-ex.org/>



**“YELLOW TULIP”  
© HELEN COOK  
2018 Coachella International Exhibition of Photography  
PID Color Theme - Flower(s)**



**“BURROWING OWLETS”**  
**© PETER CURCIS**  
**2018 Coachella International Exhibition of Photography**  
**PID Color General**



**“GREAT GRAY HUNTING IN SNOW”**  
**© PETER CURCIS**  
**2018 Coachella International Exhibition of Photography**  
**PID Color General**  
**CVDCC Silver**

PID Color Page 71

<http://www.coachella-ex.org/>





**“SANDHILL FAMILY DINNER”**  
**© PETER CURCIS**  
**2018 Coachella International Exhibition of Photography**  
**PID Color General**

PID Color Page 72

<http://www.coachella-ex.org/>





**“WESTERN EMERALD”**  
**© PETER CURCIS**  
**2018 Coachella International Exhibition of Photography**  
**PID Color General**  
**HM**



**“ALLIUM”**  
**© BRIAN DAVIS**  
**2018 Coachella International Exhibition of Photography**  
**PID Color Theme - Flower(s)**

PID Color Page 74

<http://www.coachella-ex.org/>



**“FROSTED TREES MAMMOTH FALLS”**  
**© BRIAN DAVIS**  
**2018 Coachella International Exhibition of Photography**  
**PID Color General**

PID Color Page 75

<http://www.coachella-ex.org/>



**“HONFLEUR”**  
**© BRIAN DAVIS**  
**2018 Coachella International Exhibition of Photography**  
**PID Color General**  
**HM**

PID Color Page 76

<http://www.coachella-ex.org/>



**“TULIP”**  
**© BRIAN DAVIS**  
**2018 Coachella International Exhibition of Photography**  
**PID Color Theme - Flower(s)**





**“CYCLIST IN THE WATER”**  
**© SHIRLEY DAVIS**  
**2018 Coachella International Exhibition of Photography**  
**PID Color General**

PID Color Page 78

<http://www.coachella-ex.org/>



**“COLD NIGHT”**  
**© JANOS DEMETER, PPSA**  
**2018 Coachella International Exhibition of Photography**  
**PID Color General**

PID Color Page 79

<http://www.coachella-ex.org/>



**“BLOSSOM SEASON”**  
**© JENNIFER DOERRIE**  
**2018 Coachella International Exhibition of Photography**  
**PID Color Theme - Flower(s)**





**“BANSHEE AND THE ENFORCER”**  
**© BRIAN DOWDALL**  
**2018 Coachella International Exhibition of Photography**  
**PID Color General**

PID Color Page 81

<http://www.coachella-ex.org/>





**“LITTLE DUTCH GIRL”  
© BRIAN DOWDALL  
2018 Coachella International Exhibition of Photography  
PID Color General  
PSA Best of Show Gold**



**“PREPERATION”**  
**© BRIAN DOWDALL**  
**2018 Coachella International Exhibition of Photography**  
**PID Color General**  
**HM**

PID Color Page 83

<http://www.coachella-ex.org/>



**“LAKE LONSDALE”**  
**© GREG EARL**  
**2018 Coachella International Exhibition of Photography**  
**PID Color General**



**“LOTUS”**  
**© GREG EARL**  
**2018 Coachella International Exhibition of Photography**  
**PID Color Theme - Flower(s)**





**“MILFORD SOUND”**  
**© GREG EARL**  
**2018 Coachella International Exhibition of Photography**  
**PID Color General**



**“MYSTIC”**  
**© GREG EARL**  
**2018 Coachella International Exhibition of Photography**  
**PID Color General**

PID Color Page 87

<http://www.coachella-ex.org/>



**“GOT MY EYE ON YOU”  
© FREDERICK EMCH  
2018 Coachella International Exhibition of Photography  
PID Color General**





**“LEADING LINES”  
© FREDERICK EMCH  
2018 Coachella International Exhibition of Photography  
PID Color General  
CVDCC Gold**

PID Color Page 89

<http://www.coachella-ex.org/>





**“LOTUS”**  
**© FREDERICK EMCH**  
**2018 Coachella International Exhibition of Photography**  
**PID Color Theme - Flower(s)**



**“MAUI FLOWER”  
© FREDERICK EMCH  
2018 Coachella International Exhibition of Photography  
PID Color Theme - Flower(s)**

PID Color Page 91

<http://www.coachella-ex.org/>



**“RED TORCH GINGER”  
© FREDERICK EMCH  
2018 Coachella International Exhibition of Photography  
PID Color Theme - Flower(s)**



**“SPIDERWORT”**  
**© FREDERICK EMCH**  
**2018 Coachella International Exhibition of Photography**  
**PID Color Theme - Flower(s)**

PID Color Page 93

<http://www.coachella-ex.org/>





**“WATCHING”**  
**© FREDERICK EMCH**  
**2018 Coachella International Exhibition of Photography**  
**PID Color General**



**“LUSCIOUS APPLE”**  
**© DAVID I. FISHER**  
**2018 Coachella International Exhibition of Photography**  
**PID Color General**



**“GOLDEN-FRONTED WOODPECKER”**  
**© RICHARD FISHER**  
**2018 Coachella International Exhibition of Photography**  
**PID Color General**



**“PERCHED GREAT GRAY OWL”**  
**© RICHARD FISHER**  
**2018 Coachella International Exhibition of Photography**  
**PID Color General**

PID Color Page 97

<http://www.coachella-ex.org/>





**“PRAIRIE SMOKE”**  
**© RICHARD FISHER**  
**2018 Coachella International Exhibition of Photography**  
**PID Color Theme - Flower(s)**

PID Color Page 98

<http://www.coachella-ex.org/>



**“SNARLING WOLF”**  
**© RICHARD FISHER**  
**2018 Coachella International Exhibition of Photography**  
**PID Color General**



**“THE JESTER”**  
**© RICHARD FISHER**  
**2018 Coachella International Exhibition of Photography**  
**PID Color General**

PID Color Page 100

<http://www.coachella-ex.org/>



**“ELIZABETH IN PORTRAIT #1”  
© JAMES GALLAGHER  
2018 Coachella International Exhibition of Photography  
PID Color General**





**“STORM CLOUDS AND SCHOONERS”**  
© JAMES GALLAGHER  
2018 Coachella International Exhibition of Photography  
PID Color General

PID Color Page 102

<http://www.coachella-ex.org/>



**“BE SEEN BY MILLION”  
© LEONID GOLDIN  
2018 Coachella International Exhibition of Photography  
PID Color General**



**“REACHING OUT”**  
**© ARNIE GOLDSTEIN**  
**2018 Coachella International Exhibition of Photography**  
**PID Color Theme - Flower(s)**



**“SNOW BALL”**  
**© ARNIE GOLDSTEIN**  
**2018 Coachella International Exhibition of Photography**  
**PID Color Theme - Flower(s)**





**“HORSE LATITUDE”  
© LEAH GRAY  
2018 Coachella International Exhibition of Photography  
PID Color General**



**“SOUTHERN RED BISHOP SPEAKS”**  
© LEAH GRAY  
2018 Coachella International Exhibition of Photography  
PID Color General



**“IN THE LAND OF NOD”**  
**© JAN HANDMAN**  
**2018 Coachella International Exhibition of Photography**  
**PID Color General**  
**Judge’s Choice**

PID Color Page 108

<http://www.coachella-ex.org/>



**“MOMENT OF ZEN”  
© JAN HANDMAN  
2018 Coachella International Exhibition of Photography  
PID Color General  
CVDCC Bronze**

PID Color Page 109

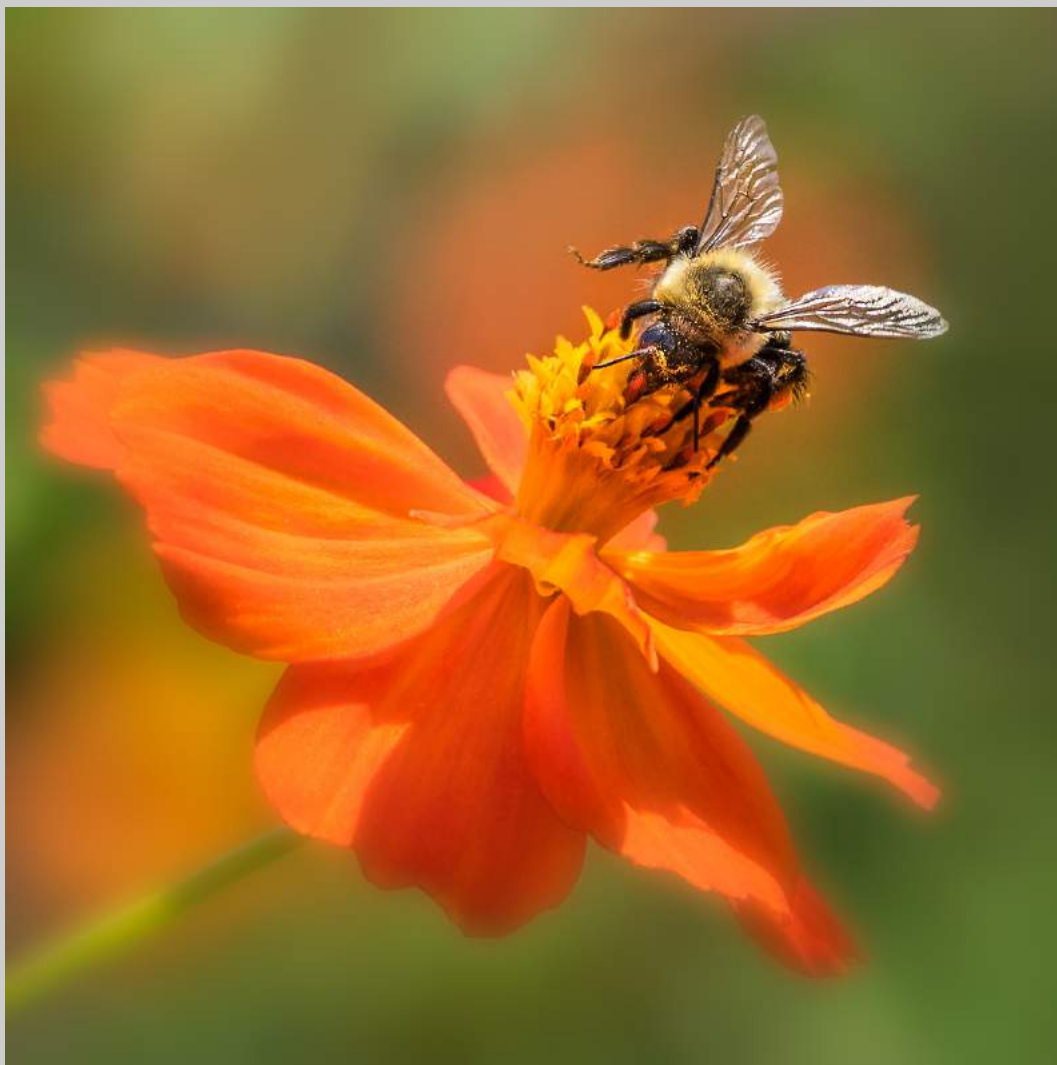
<http://www.coachella-ex.org/>





**“RETRO REWIND”**  
**© JAN HANDMAN**  
**2018 Coachella International Exhibition of Photography**  
**PID Color General**

PID Color Page 110  
<http://www.coachella-ex.org/>



**“BEE ON ORANGE FLOWER”**  
**© G. MARGARET HENNES**  
**2018 Coachella International Exhibition of Photography**  
**PID Color General**

PID Color Page 111

<http://www.coachella-ex.org/>



**“PURPLE AND GOLD”**  
**© G. MARGARET HENNES**  
**2018 Coachella International Exhibition of Photography**  
**PID Color Theme - Flower(s)**  
**HM**

PID Color Page 112

<http://www.coachella-ex.org/>





**“PURPLE DAHLIA”**  
**© G. MARGARET HENNES**  
**2018 Coachella International Exhibition of Photography**  
**PID Color Theme - Flower(s)**  
**HM**





**“RED AND YELLOW MUM”  
© G. MARGARET HENNES  
2018 Coachella International Exhibition of Photography  
PID Color Theme - Flower(s)**

PID Color Page 114

<http://www.coachella-ex.org/>



**“TIGER SWALLOWTAIL”**  
**© G. MARGARET HENNES**  
**2018 Coachella International Exhibition of Photography**  
**PID Color General**

PID Color Page 115

<http://www.coachella-ex.org/>



**“PEACH”**  
**© ALEXANDER HOCHHAUS**  
**2018 Coachella International Exhibition of Photography**  
**PID Color General**

PID Color Page 116

<http://www.coachella-ex.org/>





**“SPARE PARTS”**  
**© BILL HODGES**  
**2018 Coachella International Exhibition of Photography**  
**PID Color General**





**“DAISIES”**  
**© JENNI HORSNELL, GMPA**  
**2018 Coachella International Exhibition of Photography**  
**PID Color Theme - Flower(s)**

PID Color Page 118

<http://www.coachella-ex.org/>



**“DEWY DAMSELFLY 33”**  
**© JENNI HORSNELL, GMPA**  
**2018 Coachella International Exhibition of Photography**  
**PID Color General**  
**HM**

PID Color Page 119

<http://www.coachella-ex.org/>



**“FADED LILIES”**  
**© JENNI HORSNELL, GMPA**  
**2018 Coachella International Exhibition of Photography**  
**PID Color Theme - Flower(s)**  
**PSA Best of Show Gold**

PID Color Page 120

<http://www.coachella-ex.org/>



**“JENNY WREN WITH ANTS 2”**  
**© JENNI HORSNELL, GMPA**  
**2018 Coachella International Exhibition of Photography**  
**PID Color General**

PID Color Page 121

<http://www.coachella-ex.org/>





**“PERFECT BALANCE”**  
**© JENNI HORSNELL, GMP SA**  
**2018 Coachella International Exhibition of Photography**  
**PID Color General**  
**HM**

PID Color Page 122

<http://www.coachella-ex.org/>



**“SOFT IRISES”**  
**© JENNI HORSNELL, GMP SA**  
**2018 Coachella International Exhibition of Photography**  
**PID Color Theme - Flower(s)**  
**CVDCC Silver**

PID Color Page 123

<http://www.coachella-ex.org/>



**“WHITE LILIES”**  
**© JENNI HORSNELL, GMP SA**  
**2018 Coachella International Exhibition of Photography**  
**PID Color Theme - Flower(s)**  
**CVDCC Bronze**

PID Color Page 124

<http://www.coachella-ex.org/>



**“GRAND HAVEN LIGHTHOUSE”**  
**© YOUMANS HSIONG**  
**2018 Coachella International Exhibition of Photography**  
**PID Color General**

PID Color Page 125

<http://www.coachella-ex.org/>





**“BEAN CURD WORKSHOP”**  
© LIN HU  
2018 Coachella International Exhibition of Photography  
PID Color General  
HM

PID Color Page 126

<http://www.coachella-ex.org/>



**“DURBAR SQUARE”**  
**© LIN HU**  
**2018 Coachella International Exhibition of Photography**  
**PID Color General**



**“OLD MAN5”**  
**© HAIYAN HUANG**  
**2018 Coachella International Exhibition of Photography**  
**PID Color General**

PID Color Page 128

<http://www.coachella-ex.org/>



**“THE OLD TEA HOUSE1”**  
**© HAIYAN HUANG**  
**2018 Coachella International Exhibition of Photography**  
**PID Color General**  
**HM**

PID Color Page 129

<http://www.coachella-ex.org/>





**“RAINBOW RINGS”**  
**© BARBARA JENKIN, GMPA**  
**2018 Coachella International Exhibition of Photography**  
**PID Color General**

PID Color Page 130

<http://www.coachella-ex.org/>



**“AYLA AND CUBE”**  
**© MALCOLM JENKIN, GMPSA**  
**2018 Coachella International Exhibition of Photography**  
**PID Color General**

PID Color Page 131

<http://www.coachella-ex.org/>



**“GOLDEN LADY”**  
**© MALCOLM JENKIN, GMPSA**  
**2018 Coachella International Exhibition of Photography**  
**PID Color General**  
**HM**

PID Color Page 132

<http://www.coachella-ex.org/>



**“REFLECTED GECKO 2”**  
**© MALCOLM JENKIN, GMPSA**  
**2018 Coachella International Exhibition of Photography**  
**PID Color General**

PID Color Page 133

<http://www.coachella-ex.org/>





**“FIGHT”**  
**© SHENGFU JIAO**  
**2018 Coachella International Exhibition of Photography**  
**PID Color General**

PID Color Page 134

<http://www.coachella-ex.org/>



**“PURSUE AND CAPTURE”**  
**© SHENGFU JIAO**  
**2018 Coachella International Exhibition of Photography**  
**PID Color General**

PID Color Page 135

<http://www.coachella-ex.org/>



**“SHEPHERD”**  
**© SHENGFU JIAO**  
**2018 Coachella International Exhibition of Photography**  
**PID Color General**

PID Color Page 136

<http://www.coachella-ex.org/>



**“BABSON\_2016(1488)”**  
**© ANDREW KATSAMPES**  
**2018 Coachella International Exhibition of Photography**  
**PID Color General**

PID Color Page 137

<http://www.coachella-ex.org/>





**“STEFFEN\_2017(7255)”**  
**© ANDREW KATSAMPES**  
**2018 Coachella International Exhibition of Photography**  
**PID Color General**

PID Color Page 138

<http://www.coachella-ex.org/>



**“ORANGE BEGONIA”**  
**© FRANCIS KENNEDY, EPSA**  
**2018 Coachella International Exhibition of Photography**  
**PID Color Theme - Flower(s)**

PID Color Page 139

<http://www.coachella-ex.org/>



**“PEONY ROSE”**  
**© FRANCIS KENNEDY, EPSA**  
**2018 Coachella International Exhibition of Photography**  
**PID Color Theme - Flower(s)**

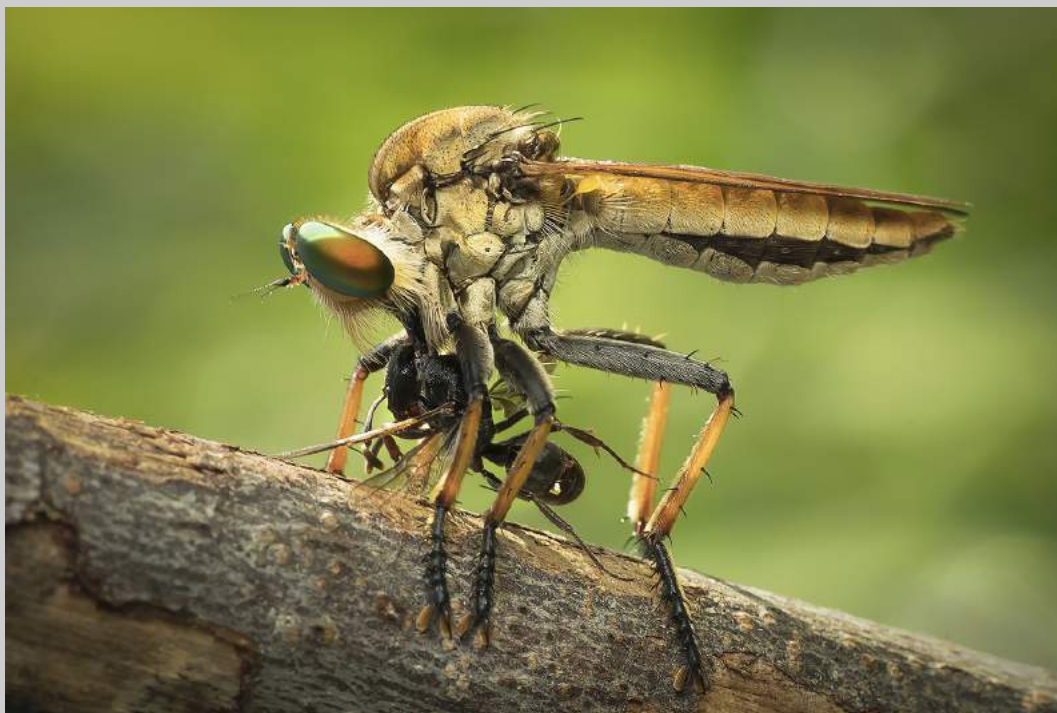


**“PINK BEGONIA”**  
**© FRANCIS KENNEDY, EPSA**  
**2018 Coachella International Exhibition of Photography**  
**PID Color Theme - Flower(s)**

PID Color Page 141

<http://www.coachella-ex.org/>





**“DELICIOUS 6”**  
**© YEOKKIAN KOH**  
**2018 Coachella International Exhibition of Photography**  
**PID Color General**

PID Color Page 142

<http://www.coachella-ex.org/>



**“BUCKEYES ON LOOSESTRIFE”**

**© IRENE KRAMER**

**2018 Coachella International Exhibition of Photography  
PID Color General**

PID Color Page 143

<http://www.coachella-ex.org/>



**“DAHLIA - HOTSHOT”  
© IRENE KRAMER  
2018 Coachella International Exhibition of Photography  
PID Color Theme - Flower(s)  
HM**



**“YELLOW LADY'S SLIPPER”**  
**© IRENE KRAMER**  
**2018 Coachella International Exhibition of Photography**  
**PID Color Theme - Flower(s)**

PID Color Page 145

<http://www.coachella-ex.org/>





**“PINK LOTUS”**  
**© BARBARA KUEBLER, APSA, MPSA**  
**2018 Coachella International Exhibition of Photography**  
**PID Color Theme - Flower(s)**

PID Color Page 146

<http://www.coachella-ex.org/>



**“WHOSE FEATHERS OF OSPREY”**  
**© CHUN CHENG KUO**  
**2018 Coachella International Exhibition of Photography**  
**PID Color General**



**“PUT OUT TO PASTURE”  
© JAN LEE, FPSA, EPSA  
2018 Coachella International Exhibition of Photography  
PID Color General**



**“SUNFLOWER”**  
**© JAN LEE, FPSA, EPSA**  
**2018 Coachella International Exhibition of Photography**  
**PID Color Theme - Flower(s)**





**“TWO FOR DINNER”**  
**© JAN LEE, FPSA, EPSA**  
**2018 Coachella International Exhibition of Photography**  
**PID Color General**



**“HARD WORKING”**  
**© WING CHUNG KENNETH LEUNG, PPSA**  
**2018 Coachella International Exhibition of Photography**  
**PID Color General**

PID Color Page 151

<http://www.coachella-ex.org/>



**“ROW THE BOAT”**  
**© WING CHUNG KENNETH LEUNG, PPSA**  
**2018 Coachella International Exhibition of Photography**  
**PID Color General**

PID Color Page 152

<http://www.coachella-ex.org/>

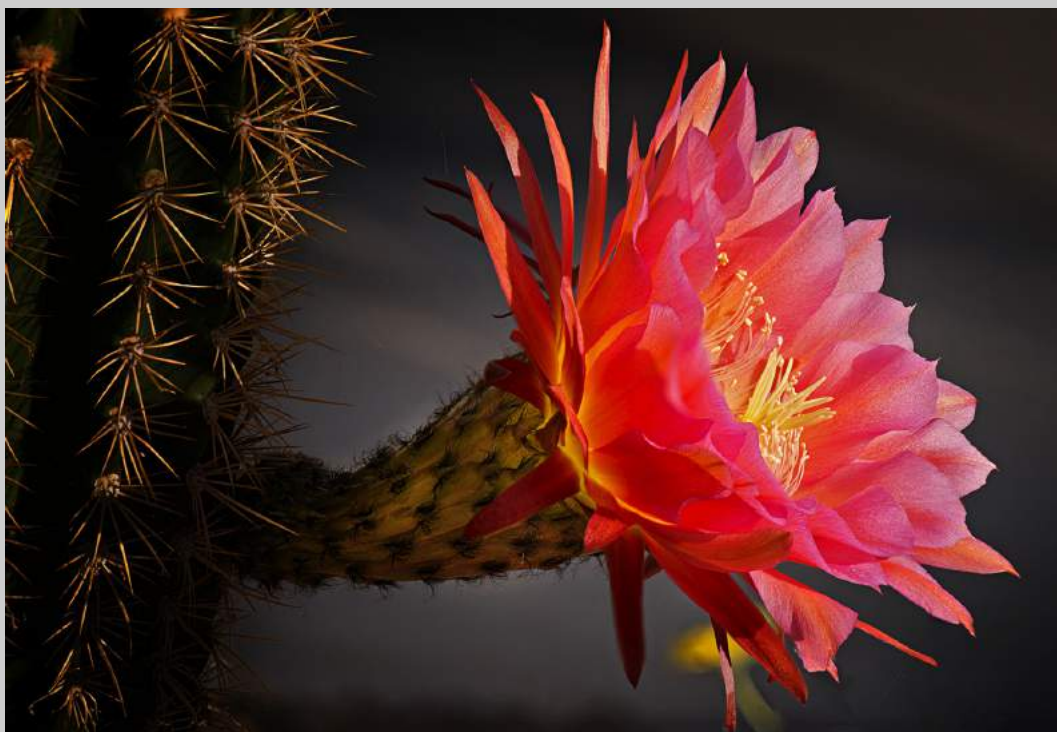


**“YOUNG MONKS STUDYING”**  
**© WING CHUNG KENNETH LEUNG, PPSA**  
**2018 Coachella International Exhibition of Photography**  
**PID Color General**

PID Color Page 153

<http://www.coachella-ex.org/>





**“CACTUS IN MORNING LIGHT”**  
**© WILLIAM LEWIS**  
**2018 Coachella International Exhibition of Photography**  
**PID Color Theme - Flower(s)**

PID Color Page 154

<http://www.coachella-ex.org/>



**“KICKING OFF THE BOOTS”  
© WILLIAM LEWIS  
2018 Coachella International Exhibition of Photography  
PID Color General**

PID Color Page 155

<http://www.coachella-ex.org/>



**“PALOUSE FROM STEPTOE BUTTE”  
© WILLIAM LEWIS  
2018 Coachella International Exhibition of Photography  
PID Color General**



**“THREE DAISIES”**  
**© WILLIAM LEWIS**  
**2018 Coachella International Exhibition of Photography**  
**PID Color Theme - Flower(s)**





**“YELLOW SULPHUR”**  
**© WILLIAM LEWIS**  
**2018 Coachella International Exhibition of Photography**  
**PID Color General**



**“DRAGON”**  
**© JINGRU LUO, PPSA**  
**2018 Coachella International Exhibition of Photography**  
**PID Color General**  
**HM**

PID Color Page 159

<http://www.coachella-ex.org/>



**“BOATS AND BRIDGE”  
© CINDY LYNCH  
2018 Coachella International Exhibition of Photography  
PID Color General**

PID Color Page 160  
<http://www.coachella-ex.org/>



**“COCOA CUP AND PEARLS”**  
**© CINDY LYNCH**  
**2018 Coachella International Exhibition of Photography**  
**PID Color General**

PID Color Page 161

<http://www.coachella-ex.org/>





**“SKATES AND KEY”**  
**© CINDY LYNCH**  
**2018 Coachella International Exhibition of Photography**  
**PID Color General**



**“CARA”**  
**© DIANA MAGOR, MPSA**  
**2018 Coachella International Exhibition of Photography**  
**PID Color General**



**“PROTEUS FLOWER”**  
**© DIANA MAGOR, MPSA**  
**2018 Coachella International Exhibition of Photography**  
**PID Color Theme - Flower(s)**

PID Color Page 164

<http://www.coachella-ex.org/>





**"1 HOT MAMMA IN JEANS AND HAT"**  
**© JAMES MAHONEY, APSA, EPSA**  
**2018 Coachella International Exhibition of Photography**  
**PID Color General**

PID Color Page 165

<http://www.coachella-ex.org/>





**“FOLLY BEACH SUNRISE”**  
**© ROSALIE MAHONEY**  
**2018 Coachella International Exhibition of Photography**  
**PID Color General**

PID Color Page 166

<http://www.coachella-ex.org/>



**“MORAINE LAKE 2”  
© ROSALIE MAHONEY  
2018 Coachella International Exhibition of Photography  
PID Color General**

PID Color Page 167

<http://www.coachella-ex.org/>



**“DUNES OF MONUMENT VALLEY”  
© MICHAEL MARCUS  
2018 Coachella International Exhibition of Photography  
PID Color General**





**“CHLOE 76”**  
**© DAVID M MASLIN, EPSA**  
**2018 Coachella International Exhibition of Photography**  
**PID Color General**





**“GREEN JAY”**  
**© LESLEY MATTUCHIO**  
**2018 Coachella International Exhibition of Photography**  
**PID Color General**



**“LITTLE BLUE HERON”**  
**© LESLEY MATTUCHIO**  
**2018 Coachella International Exhibition of Photography**  
**PID Color General**



**“BRONZE PHALEONOPSIS”**  
**© DEE MCMILLAN**  
**2018 Coachella International Exhibition of Photography**  
**PID Color General**

PID Color Page 172

<http://www.coachella-ex.org/>



**“DAHLIA ORANGE CRINKLES”**  
**© DEE MCMILLAN**  
**2018 Coachella International Exhibition of Photography**  
**PID Color Theme - Flower(s)**

PID Color Page 173

<http://www.coachella-ex.org/>





**“MORE TULIPS”**  
**© DEE MCMILLAN**  
**2018 Coachella International Exhibition of Photography**  
**PID Color Theme - Flower(s)**  
**CVDCC Silver**

PID Color Page 174

<http://www.coachella-ex.org/>



**“THREE RED VS TWO”**  
**© DEE MCMILLAN**  
**2018 Coachella International Exhibition of Photography**  
**PID Color Theme - Flower(s)**



**“THREE WHITE TULIPS COLOR”**  
**© DEE MCMILLAN**  
**2018 Coachella International Exhibition of Photography**  
**PID Color General**  
**HM**

PID Color Page 176

<http://www.coachella-ex.org/>



**“POLAR BEAR DISCUSSION”**  
**© DAVID MEISENHEIMER, FPSA, GMPSA**  
**2018 Coachella International Exhibition of Photography**  
**PID Color General**

PID Color Page 177

<http://www.coachella-ex.org/>





**“SHUKSAN IN GLORY”**  
**© DAVID MEISENHEIMER, FPSA, GMPA**  
**2018 Coachella International Exhibition of Photography**  
**PID Color General**

PID Color Page 178

<http://www.coachella-ex.org/>



**“ALL TIED UP”**  
**© NEIL MILLER**  
**2018 Coachella International Exhibition of Photography**  
**PID Color General**  
**HM**

PID Color Page 179

<http://www.coachella-ex.org/>



**“EARLY MORN AT BARKER DAM”  
© NEIL MILLER  
2018 Coachella International Exhibition of Photography  
PID Color General**





**“MOUNTAIN BLUEBIRD”**  
**© NEIL MILLER**  
**2018 Coachella International Exhibition of Photography**  
**PID Color General**





**“A POPPY FOR PAM”  
© HOLLY MOORE, PPSA  
2018 Coachella International Exhibition of Photography  
PID Color Theme - Flower(s)**



**“LOTUS FLOWER ON BLACK”  
© HOLLY MOORE, PPSA  
2018 Coachella International Exhibition of Photography  
PID Color Theme - Flower(s)  
CVDCC Bronze**

PID Color Page 183

<http://www.coachella-ex.org/>



**“ONE WAY”**  
**© HOLLY MOORE, PPSA**  
**2018 Coachella International Exhibition of Photography**  
**PID Color General**

PID Color Page 184

<http://www.coachella-ex.org/>



**“PINK CONE FLOWER”  
© HOLLY MOORE, PPSA  
2018 Coachella International Exhibition of Photography  
PID Color Theme - Flower(s)  
Judge’s Choice**

PID Color Page 185

<http://www.coachella-ex.org/>





**“JODIE”**  
**© PETER MORGAN**  
**2018 Coachella International Exhibition of Photography**  
**PID Color General**



**“MILKY WAY AND SNAG”**  
**© KEN MURPHY, APSA, EPSA**  
**2018 Coachella International Exhibition of Photography**  
**PID Color General**

PID Color Page 187

<http://www.coachella-ex.org/>



**“DANDELION 3”**  
**© MATTHEW MUSKOVAC, APSA, PPSA**  
**2018 Coachella International Exhibition of Photography**  
**PID Color General**

PID Color Page 188

<http://www.coachella-ex.org/>



**“GROSBEAK IN SNOW”**  
**© JUDITH NAGEL**  
**2018 Coachella International Exhibition of Photography**  
**PID Color General**  
**HM**





**“CORTONA-PIENZA 61”**  
**© IRA NEMEROFF, MPSA**  
**2018 Coachella International Exhibition of Photography**  
**PID Color General**



**“FLOWER 142”**  
**© IRA NEMEROFF, MPSA**  
**2018 Coachella International Exhibition of Photography**  
**PID Color Theme - Flower(s)**

PID Color Page 191

<http://www.coachella-ex.org/>



**“BEE AND SUNFLOWER”**  
**© HUONG HOA NGUYEN**  
**2018 Coachella International Exhibition of Photography**  
**PID Color Theme - Flower(s)**



**“FULL BLOOM LOTUS A12”  
© HUONG HOA NGUYEN  
2018 Coachella International Exhibition of Photography  
PID Color Theme - Flower(s)  
HM**

PID Color Page 193

<http://www.coachella-ex.org/>





**“BASKET OF ROSES”**  
**© KRISTINA OSWALD**  
**2018 Coachella International Exhibition of Photography**  
**PID Color Theme - Flower(s)**

PID Color Page 194

<http://www.coachella-ex.org/>



**“GROUP OF THREE”  
© KRISTINA OSWALD  
2018 Coachella International Exhibition of Photography  
PID Color General**

PID Color Page 195

<http://www.coachella-ex.org/>



**“IN THE CAN”**  
**© KRISTINA OSWALD**  
**2018 Coachella International Exhibition of Photography**  
**PID Color Theme - Flower(s)**



**“RED ROSES ANDWINE”**  
**© KRISTINA OSWALD**  
**2018 Coachella International Exhibition of Photography**  
**PID Color Theme - Flower(s)**





**“SEAROAD 3”**  
**© RAY PAPULIS**  
**2018 Coachella International Exhibition of Photography**  
**PID Color General**



**“CLASH OF THE TITANS”**  
**© ROBERT PIZZANO**  
**2018 Coachella International Exhibition of Photography**  
**PID Color General**



**“LUNAR ECLIPSE OVER SEATTLE”  
© ROBERT PIZZANO  
2018 Coachella International Exhibition of Photography  
PID Color General  
HM**

PID Color Page 200

<http://www.coachella-ex.org/>



**“MOTOCROSS FLYING DIRT”**  
**© ROBERT PIZZANO**  
**2018 Coachella International Exhibition of Photography**  
**PID Color General**

PID Color Page 201

<http://www.coachella-ex.org/>





**“ELK FIGHT”**  
**© NATALYA PLUZHNIKOV, PPSA**  
**2018 Coachella International Exhibition of Photography**  
**PID Color General**

PID Color Page 202

<http://www.coachella-ex.org/>



**“GLOWING LOTUS BLOSSOM”**  
**© NATALYA PLUZHNIKOV, PPSA**  
**2018 Coachella International Exhibition of Photography**  
**PID Color Theme - Flower(s)**

PID Color Page 203

<http://www.coachella-ex.org/>



**“PEACEFUL MORNING IN DISKO BAY”  
© NATALYA PLUZHNIKOV, PPSA  
2018 Coachella International Exhibition of Photography  
PID Color General**

PID Color Page 204

<http://www.coachella-ex.org/>



**“ZEBRAS DRINKING NEW VERSION”  
© NATALYA PLUZHNIKOV, PPSA  
2018 Coachella International Exhibition of Photography  
PID Color General**

PID Color Page 205

<http://www.coachella-ex.org/>





**“STAR OF BETHLEHEM”**  
**© SHARON PRISLIPSKY**  
**2018 Coachella International Exhibition of Photography**  
**PID Color Theme - Flower(s)**

PID Color Page 206

<http://www.coachella-ex.org/>



**“THE RIVER RUNS THROUGH IT”  
© SHARON PRISLIPSKY  
2018 Coachella International Exhibition of Photography  
PID Color General**

PID Color Page 207

<http://www.coachella-ex.org/>



**“WEATHERED”**  
**© SHARON PRISLIPSKY**  
**2018 Coachella International Exhibition of Photography**  
**PID Color General**  
**HM**

PID Color Page 208

<http://www.coachella-ex.org/>



**"FIRST FROST"**  
**© BIRGIT PUSTELNIK, PPSA**  
**2018 Coachella International Exhibition of Photography**  
**PID Color General**

PID Color Page 209

<http://www.coachella-ex.org/>





**“FOG AND FROST”**  
**© BIRGIT PUSTELNIK, PPSA**  
**2018 Coachella International Exhibition of Photography**  
**PID Color General**  
**HM**

PID Color Page 210

<http://www.coachella-ex.org/>



**“FOREST EDGE”**  
**© BIRGIT PUSTELNIK, PPSA**  
**2018 Coachella International Exhibition of Photography**  
**PID Color Theme - Flower(s)**

PID Color Page 211

<http://www.coachella-ex.org/>



**“PULSATILLA SUNDOWN”**  
**© BIRGIT PUSTELNIK, PPSA**  
**2018 Coachella International Exhibition of Photography**  
**PID Color Theme - Flower(s)**

PID Color Page 212

<http://www.coachella-ex.org/>



**“WOOD ANEMONES”**  
**© BIRGIT PUSTELNIK, PPSA**  
**2018 Coachella International Exhibition of Photography**  
**PID Color Theme - Flower(s)**

PID Color Page 213

<http://www.coachella-ex.org/>





**“GLADE CREEK GRIST MILL”**  
**© ERIK ROSENGREN, APSA, PPSA**  
**2018 Coachella International Exhibition of Photography**  
**PID Color General**

PID Color Page 214

<http://www.coachella-ex.org/>



**“LOVELY PINK DAHLIA”  
© TRUDY RUNYAN, EPSA  
2018 Coachella International Exhibition of Photography  
PID Color Theme - Flower(s)**

PID Color Page 215

<http://www.coachella-ex.org/>



**“ORANGE AND YELLOW DAHLIA”**  
**© TRUDY RUNYAN, EPSA**  
**2018 Coachella International Exhibition of Photography**  
**PID Color Theme - Flower(s)**

PID Color Page 216

<http://www.coachella-ex.org/>





**“YELLOW DAHLIA”**  
**© TRUDY RUNYAN, EPSA**  
**2018 Coachella International Exhibition of Photography**  
**PID Color Theme - Flower(s)**





**“LADY SLIPPER”**  
**© STEPHANEE SADEK**  
**2018 Coachella International Exhibition of Photography**  
**PID Color Theme - Flower(s)**



**“BANTAM BEACH ROOSTER”**  
**© DENISE SALDANA**  
**2018 Coachella International Exhibition of Photography**  
**PID Color General**  
**Judge’s Choice**

PID Color Page 219

<http://www.coachella-ex.org/>



**“BLUE CHIFFON”**  
**© DENISE SALDANA**  
**2018 Coachella International Exhibition of Photography**  
**PID Color Theme - Flower(s)**  
**CVDCC Bronze**



**“DEFENDING TERRITORY”**  
**© DENISE SALDANA**  
**2018 Coachella International Exhibition of Photography**  
**PID Color General**





**“ENDLESS SUMMER DAHLIA”**  
**© DENISE SALDANA**  
**2018 Coachella International Exhibition of Photography**  
**PID Color Theme - Flower(s)**

PID Color Page 222

<http://www.coachella-ex.org/>



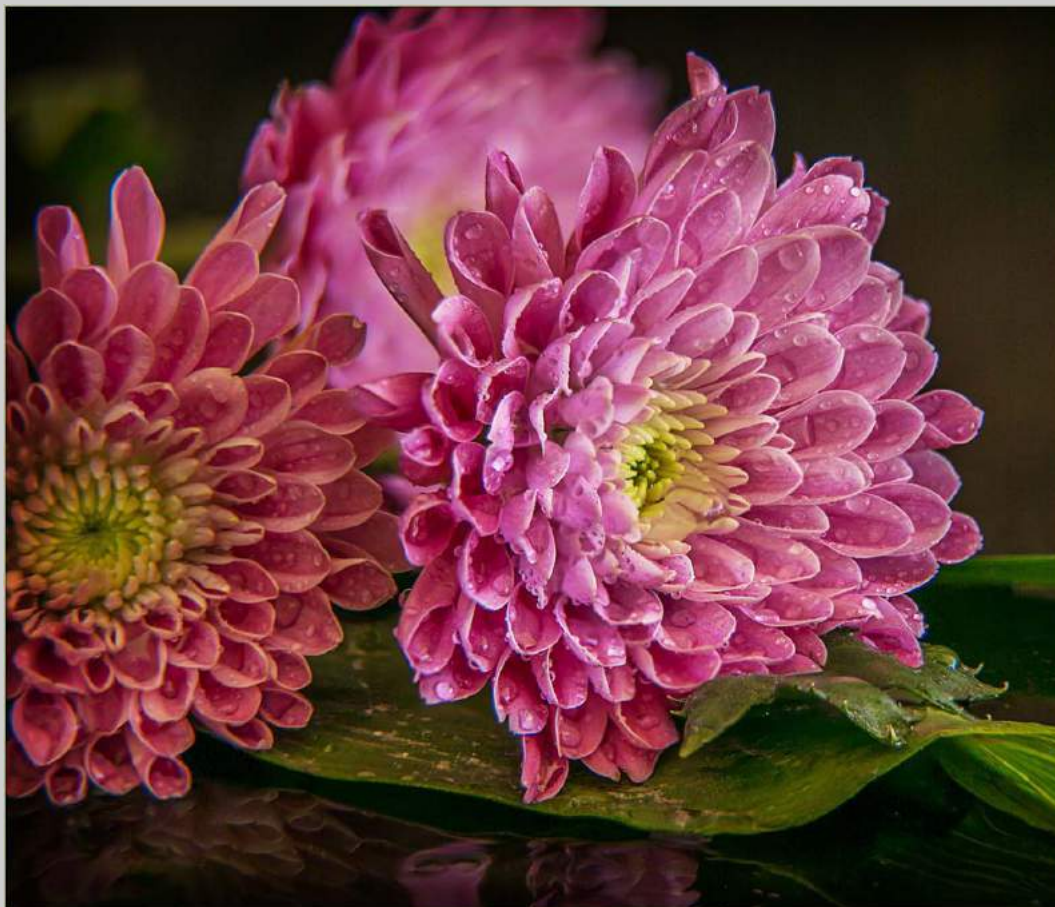
**“PAS DE DEUX”**  
**© DENISE SALDANA**  
**2018 Coachella International Exhibition of Photography**  
**PID Color Theme - Flower(s)**



**“CASA DEO BEPI SUA”**  
**© GUY B. SAMOYVAULT, APSA, GMPSA**  
**2018 Coachella International Exhibition of Photography**  
**PID Color General**

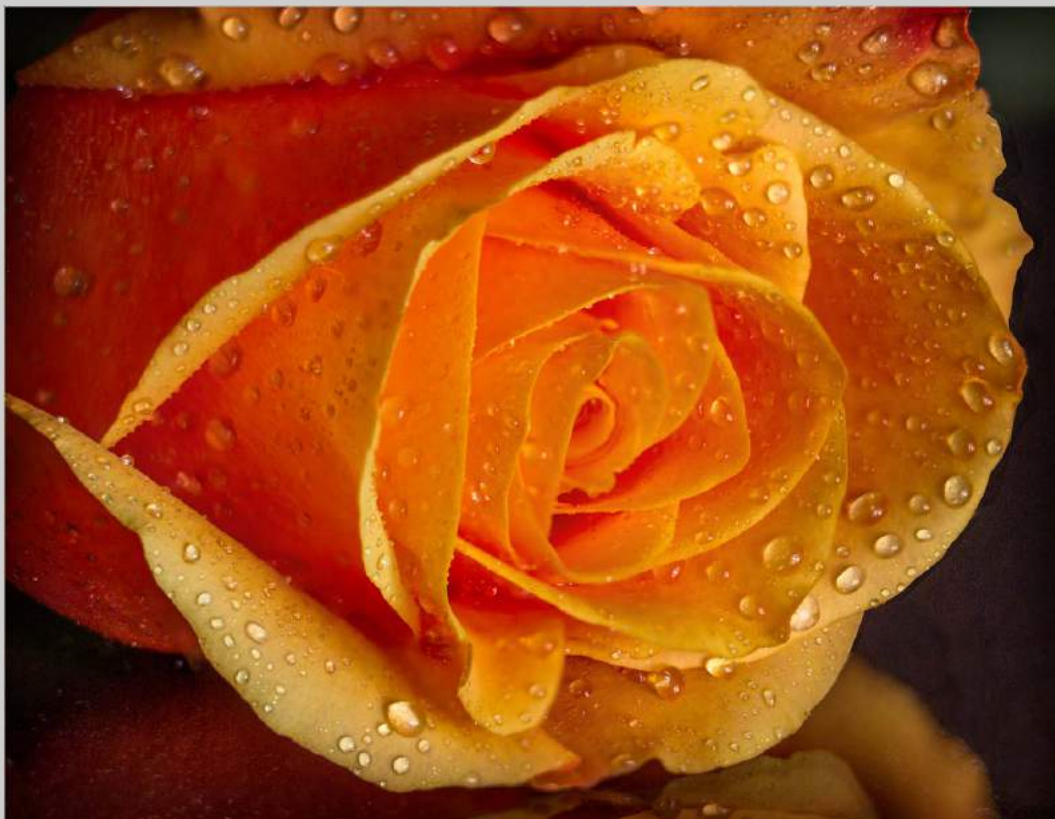
PID Color Page 224

<http://www.coachella-ex.org/>



**“MUMS”**  
**© ELLA SCHREIBER**  
**2018 Coachella International Exhibition of Photography**  
**PID Color Theme - Flower(s)**





**“YELLOW ROSE”**  
**© ELLA SCHREIBER**  
**2018 Coachella International Exhibition of Photography**  
**PID Color Theme - Flower(s)**



**“YELLOW TIGER LILY”**  
**© ELLA SCHREIBER**  
**2018 Coachella International Exhibition of Photography**  
**PID Color Theme - Flower(s)**



**“SPIEL MIT LICHT UND SCHATTEN 4 C”  
© WOLFGANG SCHWEDEN, GMP  
2018 Coachella International Exhibition of Photography  
PID Color General**

PID Color Page 228

<http://www.coachella-ex.org/>



**“VINTAGE 1 C”**  
**© WOLFGANG SCHWEDEN, GMPSA**  
**2018 Coachella International Exhibition of Photography**  
**PID Color General**

PID Color Page 229

<http://www.coachella-ex.org/>





**“MILKY WAY WITH YUCCAS 7407”  
© JEANNE SCOTT  
2018 Coachella International Exhibition of Photography  
PID Color General**

PID Color Page 230

<http://www.coachella-ex.org/>



**“SHIRLEY LAUGHS AT THE MILKY WAY”  
© JEANNE SCOTT  
2018 Coachella International Exhibition of Photography  
PID Color General**

PID Color Page 231

<http://www.coachella-ex.org/>



**“CACTUS FLOWER WITH A TWIST”**  
**© DEBORAH SEIBLY**  
**2018 Coachella International Exhibition of Photography**  
**PID Color Theme - Flower(s)**



**“MATILIJA POPPY”**  
**© DEBORAH SEIBLY**  
**2018 Coachella International Exhibition of Photography**  
**PID Color Theme - Flower(s)**  
**CVDCC Gold**

PID Color Page 233

<http://www.coachella-ex.org/>





**“SPLENDOR IN THE GRASS”**  
**© DEBORAH SEIBLY**  
**2018 Coachella International Exhibition of Photography**  
**PID Color Theme - Flower(s)**

PID Color Page 234

<http://www.coachella-ex.org/>



**“WILD POPPIES REACHING SKYWARD”  
© SCOTT SHACKELFORD  
2018 Coachella International Exhibition of Photography  
PID Color Theme - Flower(s)**

PID Color Page 235

<http://www.coachella-ex.org/>



**“LEAVES IN ICE”**  
**© SAMUEL G SHAW, FPSA, MPSA**  
**2018 Coachella International Exhibition of Photography**  
**PID Color General**

PID Color Page 236

<http://www.coachella-ex.org/>



**“ROLLING WAVES”**  
**© MIRANDA SIU**  
**2018 Coachella International Exhibition of Photography**  
**PID Color General**





**“ALERT WATER DRAGON”**  
**© ANN SMALLEGANGE, PPSA**  
**2018 Coachella International Exhibition of Photography**  
**PID Color General**

PID Color Page 238

<http://www.coachella-ex.org/>



**“LACEWING NO 15”**  
**© ANN SMALLEGANGE, PPSA**  
**2018 Coachella International Exhibition of Photography**  
**PID Color General**

PID Color Page 239

<http://www.coachella-ex.org/>



**“TULIPS ORANGE ROWS”**  
**© ANN SMALLEGANGE, PPSA**  
**2018 Coachella International Exhibition of Photography**  
**PID Color Theme - Flower(s)**

PID Color Page 240

<http://www.coachella-ex.org/>



**“WORKING LATE”**  
**© ANN SMALLEGANGE, PPSA**  
**2018 Coachella International Exhibition of Photography**  
**PID Color General**

PID Color Page 241

<http://www.coachella-ex.org/>

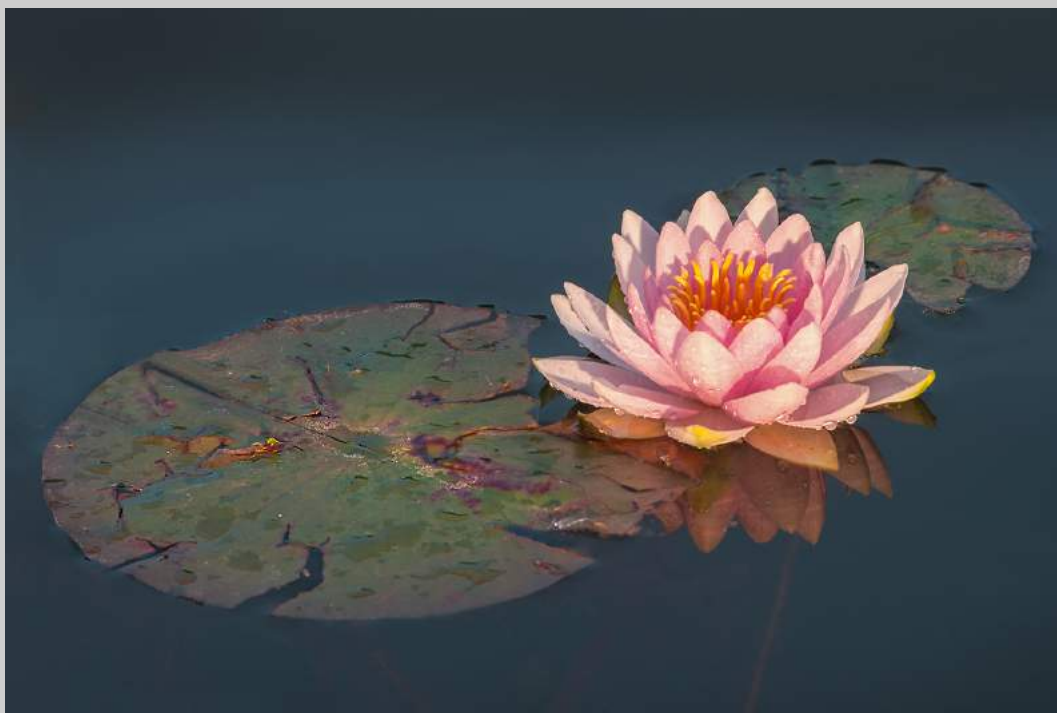




**“A FLY FISHING MEMORY”**  
**© LISA ST PIERRE SOWELL**  
**2018 Coachella International Exhibition of Photography**  
**PID Color General**  
**HM**

PID Color Page 242

<http://www.coachella-ex.org/>



**“HUDSON LILY”**  
**© LISA ST PIERRE SOWELL**  
**2018 Coachella International Exhibition of Photography**  
**PID Color Theme - Flower(s)**

PID Color Page 243

<http://www.coachella-ex.org/>



**“BONGELINE 7109”  
© JAN-THOMAS STAKE, GMPSA  
2018 Coachella International Exhibition of Photography  
PID Color General**

PID Color Page 244

<http://www.coachella-ex.org/>



**“BONGELINE TAKING A BATH”  
© JAN-THOMAS STAKE, GMP  
2018 Coachella International Exhibition of Photography  
PID Color General**

PID Color Page 245

<http://www.coachella-ex.org/>





**“LION KING”  
© MARCY STARNES  
2018 Coachella International Exhibition of Photography  
PID Color General  
Judge’s Choice**

PID Color Page 246

<http://www.coachella-ex.org/>



**“SUNRISE AT WHITE POCKET”**  
**© MARCY STARNES**  
**2018 Coachella International Exhibition of Photography**  
**PID Color General**

PID Color Page 247

<http://www.coachella-ex.org/>



**“YOSEMITE FALLS AT NIGHT”  
© MARCY STARNES  
2018 Coachella International Exhibition of Photography  
PID Color General**

PID Color Page 248

<http://www.coachella-ex.org/>



**“AMERICAN LANDSCAPE”  
© ALEXEY SULOEV, PPSA  
2018 Coachella International Exhibition of Photography  
PID Color General**

PID Color Page 249

<http://www.coachella-ex.org/>





**“NORTHERN AURORA”**  
**© ALEXEY SULOEV, PPSA**  
**2018 Coachella International Exhibition of Photography**  
**PID Color General**

PID Color Page 250

<http://www.coachella-ex.org/>



**“CEMETERY OWL”**  
**© SAMUEL SUN**  
**2018 Coachella International Exhibition of Photography**  
**PID Color General**



**“SUNSET IN GOLDEN RIVER”**  
**© JOAO TABORDA, PPSA**  
**2018 Coachella International Exhibition of Photography**  
**PID Color General**

PID Color Page 252

<http://www.coachella-ex.org/>



**“THE NIGHT TRAIN”**  
**© JOAO TABORDA, PPSA**  
**2018 Coachella International Exhibition of Photography**  
**PID Color General**





**“YOUNG FUN”**  
**© JOAO TABORDA, PPSA**  
**2018 Coachella International Exhibition of Photography**  
**PID Color General**



**“HALT AND FALL”  
© KAM CHIU TAM  
2018 Coachella International Exhibition of Photography  
PID Color General  
HM**

PID Color Page 255

<http://www.coachella-ex.org/>



**“HORSE IN AIR”  
© KAM CHIU TAM  
2018 Coachella International Exhibition of Photography  
PID Color General  
HM**

PID Color Page 256

<http://www.coachella-ex.org/>



**“ONTARIO PARIS RODEO”  
© KAM CHIU TAM  
2018 Coachella International Exhibition of Photography  
PID Color General**





**“WRESTLING WITH CALF”**  
**© KAM CHIU TAM**  
**2018 Coachella International Exhibition of Photography**  
**PID Color General**



**“CIRCULAR XIAPU NETS”**  
**© LEE ENG TAN**  
**2018 Coachella International Exhibition of Photography**  
**PID Color General**



**“KACHIN COUPLE SONG MARKING”**  
**© LEE ENG TAN**  
**2018 Coachella International Exhibition of Photography**  
**PID Color General**

PID Color Page 260

<http://www.coachella-ex.org/>





**“XIAPU FISHING NET”**  
**© LEE ENG TAN**  
**2018 Coachella International Exhibition of Photography**  
**PID Color General**  
**CVDCC Bronze**

PID Color Page 261

<http://www.coachella-ex.org/>





**“GOTCHA 17”**  
**© TOMMY TEH, PPSA**  
**2018 Coachella International Exhibition of Photography**  
**PID Color General**



**“BUTTERFLY”**  
**© PETER TEUSCHEL**  
**2018 Coachella International Exhibition of Photography**  
**PID Color General**

PID Color Page 263

<http://www.coachella-ex.org/>



**“CALIGO”**  
**© PETER TEUSCHEL**  
**2018 Coachella International Exhibition of Photography**  
**PID Color General**  
**HM**

PID Color Page 264

<http://www.coachella-ex.org/>





**“FLOWERS AT BONITO PARK”  
© LYNN THOMPSON, FPSA, EPSA  
2018 Coachella International Exhibition of Photography  
PID Color Theme - Flower(s)**

PID Color Page 265

<http://www.coachella-ex.org/>

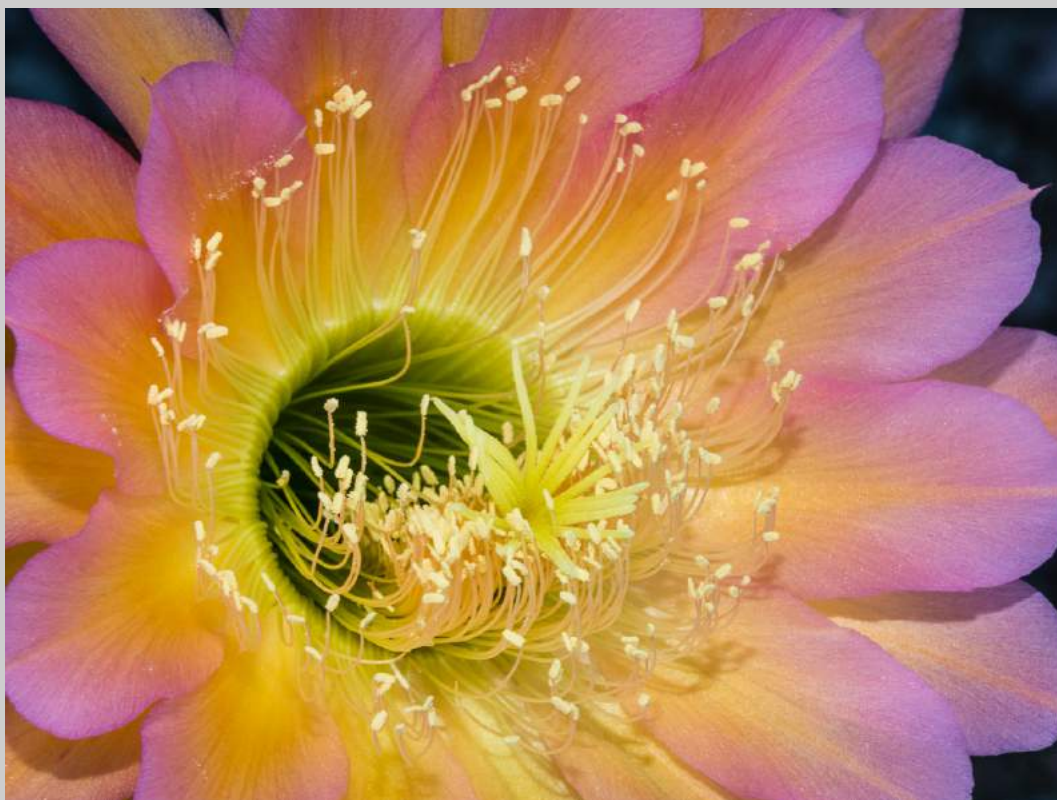




**“RUFUS HUMMER READY TO FEED”  
© LYNN THOMPSON, FPSA, EPSA  
2018 Coachella International Exhibition of Photography  
PID Color General**

PID Color Page 266

<http://www.coachella-ex.org/>



**“SPRING BLOSSOM”**  
**© LYNN THOMPSON, FPSA, EPSA**  
**2018 Coachella International Exhibition of Photography**  
**PID Color Theme - Flower(s)**  
**HM**

PID Color Page 267

<http://www.coachella-ex.org/>



**“MENDING FISH NET”**  
**© NGOCAN TO**  
**2018 Coachella International Exhibition of Photography**  
**PID Color General**



**“DAHLIA FANTASIA”**  
**© KIEU-HANH VU**  
**2018 Coachella International Exhibition of Photography**  
**PID Color Theme - Flower(s)**





**“GET MESSY WITH COLORS”**  
**© KIEU-HANH VU**  
**2018 Coachella International Exhibition of Photography**  
**PID Color General**



**“EYES ON THE BALL”**  
© ALAN WADE  
2018 Coachella International Exhibition of Photography  
PID Color General

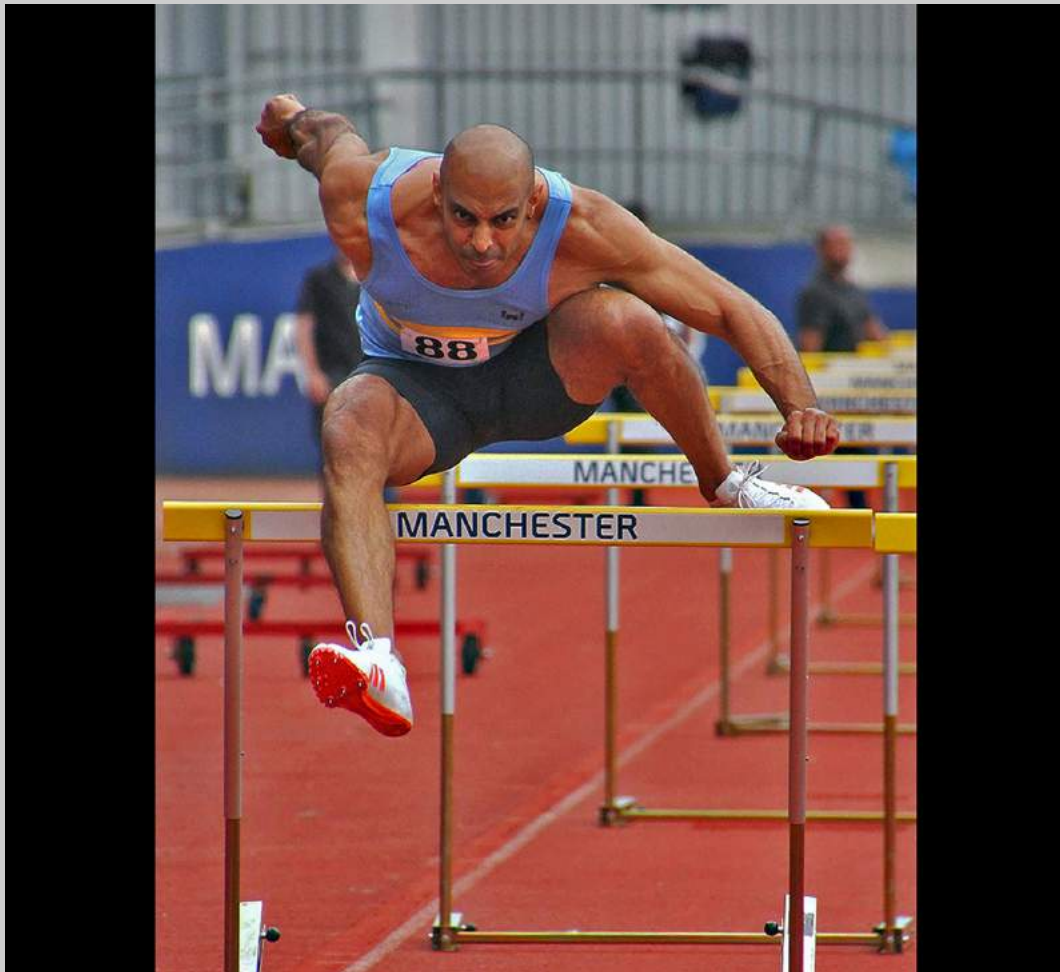


**“IN THE POTTING SHED”  
© ALAN WADE  
2018 Coachella International Exhibition of Photography  
PID Color General**

PID Color Page 272

<http://www.coachella-ex.org/>



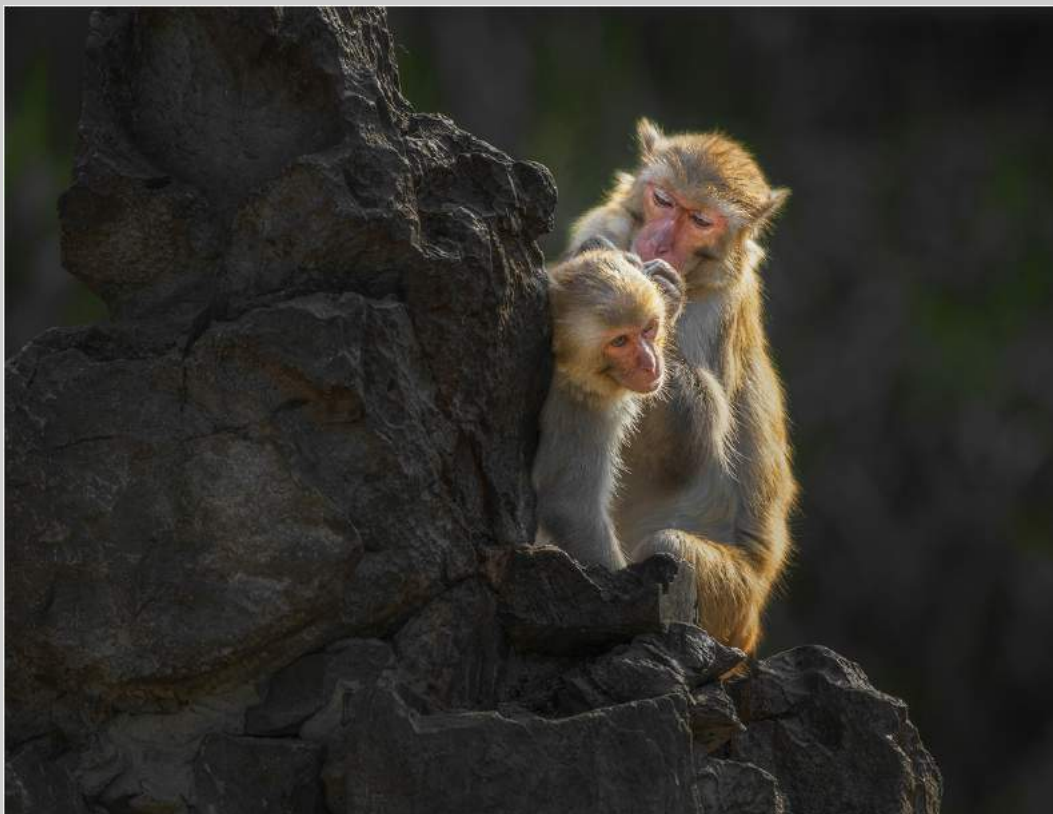


**“KHAI RIELY-LE BORG”**  
**© ALAN WADE**  
**2018 Coachella International Exhibition of Photography**  
**PID Color General**





**“ATTENTION”**  
**© YI WAN, MPSA**  
**2018 Coachella International Exhibition of Photography**  
**PID Color General**



**“MONKEY 78”**  
**© YI WAN, MPSA**  
**2018 Coachella International Exhibition of Photography**  
**PID Color General**

PID Color Page 275

<http://www.coachella-ex.org/>



**“XIAPU MARINE CULTURE”**  
**© YI WAN, MPSA**  
**2018 Coachella International Exhibition of Photography**  
**PID Color General**

PID Color Page 276  
<http://www.coachella-ex.org/>



**“WHITE LILY”**  
**© SUNIL WARNAKULASURIYA**  
**2018 Coachella International Exhibition of Photography**  
**PID Color Theme - Flower(s)**

PID Color Page 277

<http://www.coachella-ex.org/>





**“OH GEE I DROP OFF A PIECE”  
© JAMES WAT  
2018 Coachella International Exhibition of Photography  
PID Color Theme - Flower(s)**

PID Color Page 278

<http://www.coachella-ex.org/>



**“CACTUS FLOWER”**  
**© ALICE MARIE WAY**  
**2018 Coachella International Exhibition of Photography**  
**PID Color Theme - Flower(s)**



**“GAZANIA AND BEE”**  
**© ALICE MARIE WAY**  
**2018 Coachella International Exhibition of Photography**  
**PID Color Theme - Flower(s)**



**“HIBISCUS TRIO 0221”  
© JOHN WHITE  
2018 Coachella International Exhibition of Photography  
PID Color Theme - Flower(s)**





**“PITCHER AND TULIPS 8992”**  
**© JOHN WHITE**  
**2018 Coachella International Exhibition of Photography**  
**PID Color Theme - Flower(s)**  
**HM**

PID Color Page 282

<http://www.coachella-ex.org/>



**“TULIPS AND PITCHER 8993”  
© JOHN WHITE  
2018 Coachella International Exhibition of Photography  
PID Color Theme - Flower(s)  
HM**

PID Color Page 283

<http://www.coachella-ex.org/>



**“EMILY DANCING IN THE FOG”  
© DAVE WHITSON, APSA, PPSA  
2018 Coachella International Exhibition of Photography  
PID Color General**

PID Color Page 284

<http://www.coachella-ex.org/>



**“AUTUMN'S END”  
© RON WILLEMS  
2018 Coachella International Exhibition of Photography  
PID Color General**

PID Color Page 285

<http://www.coachella-ex.org/>





**"I FOUND THE LIGHT"**  
**© KATHLEEN WOLLEAT**  
**2018 Coachella International Exhibition of Photography**  
**PID Color General**  
**HM**

PID Color Page 286

<http://www.coachella-ex.org/>



**“LESTER RIVER”**  
**© KATHLEEN WOLLEAT**  
**2018 Coachella International Exhibition of Photography**  
**PID Color General**

PID Color Page 287

<http://www.coachella-ex.org/>



**“BEGUILING POSE”**  
**© SHIU GUN WONG, FPSA, EPSA**  
**2018 Coachella International Exhibition of Photography**  
**PID Color General**



**“IN XIAPU 1”  
© JURONG YU  
2018 Coachella International Exhibition of Photography  
PID Color General**

PID Color Page 289

<http://www.coachella-ex.org/>





**“DREAM TULIP”**  
**© HUAMING ZHAO**  
**2018 Coachella International Exhibition of Photography**  
**PID Color Theme - Flower(s)**

PID Color Page 290

<http://www.coachella-ex.org/>



**“THE LOTUS FLOWER IS RED”**  
**© HUAMING ZHAO**  
**2018 Coachella International Exhibition of Photography**  
**PID Color Theme - Flower(s)**

PID Color Page 291

<http://www.coachella-ex.org/>



**“COMPOSIZIONE FLOREALE 1”**  
**© EMANUELE ZUFFO, PPSA**  
**2018 Coachella International Exhibition of Photography**  
**PID Color Theme - Flower(s)**

PID Color Page 292

<http://www.coachella-ex.org/>



**“COMPOSIZIONE FLOREALE 2”**  
**© EMANUELE ZUFFO, PPSA**  
**2018 Coachella International Exhibition of Photography**  
**PID Color Theme - Flower(s)**  
**HM**

PID Color Page 293

<http://www.coachella-ex.org/>