

2014 COACHELLA INTERNATIONAL EXHIBITION OF PHOTOGRAPHY

CATALOG OF MEDAL-WINNING IMAGES

Recognized by the Photographic Society of America

Download and save to local computer or mobile device
and open with Acrobat

<http://www.cvdcc.org/exhibitions>

All copyrights in all posted images accessible through this catalog remain vested with the original makers (authors) of the images. All use, copying, or republishing without permission of the maker is prohibited, except for downloading the images directly from this document or website for viewing purposes.

Next



2014 COACHELLA INTERNATIONAL EXHIBITION OF PHOTOGRAPHY

CATALOG OF MEDAL-WINNING IMAGES

General Chairs: Stuart Lynn, HonS4C, DFS4C Lillian Roberts, DFS4C

Director of Operations: Stuart Lynn, HonS4C, DFS4C

Recognized by the Photographic Society of America

The sponsors of this International Exhibition of Photography have been awarded Recognition by PSA, the world's largest patron of international photographic exhibitions. PSA, although it has provided recognition, is neither a sponsor nor directly involved in the operation of this exhibition.



Acceptances received by PSA Members in approved sections of this exhibition are eligible for PSA Star Ratings, listing in the worldwide PSA Who's Who of Photography and credited toward the PSA Distinctions PPSA, EPSA, MPSA and GMPSA.

PSA is a non-profit organization promoting the advancement of photography in all its forms to novice, amateur and professional photographers worldwide.

For information on membership and the many services and activities of PSA, contact:

psa

PHOTOGRAPHIC SOCIETY OF AMERICA
3000 United Founders Blvd., Suite 103
Oklahoma City, OK 73112-3940, U.S.A.
E-mail: hq@psa-photo.org
Web Site: <http://www.psa-photo.org>

Next



2014 COACHELLA INTERNATIONAL EXHIBITION OF PHOTOGRAPHY

CATALOG OF MEDAL-WINNING IMAGES

General Chair: Stuart Lynn, HonS4C, DFS4C Lillian Roberts, DFS4C

Director of Operations: Stuart Lynn, HonS4C, DFS4C

INDEX

Go To Section by Clicking On Section Name

PID: Color General

PID: Color Theme (Flowers)

PID: Monochrome General

PID: Monochrome Theme (Architecture)

Nature: General

Nature: Wildlife



2014 Coachella International Exhibition of Photography Medals Catalog

Section 1: PID Color General

[Previous](#)[Next](#)[Index](#)

**2014 Coachella International Exhibition of Photography
Medals Catalog**



**SECTION 1: PID COLOR GENERAL
JUDGE'S CHOICE**

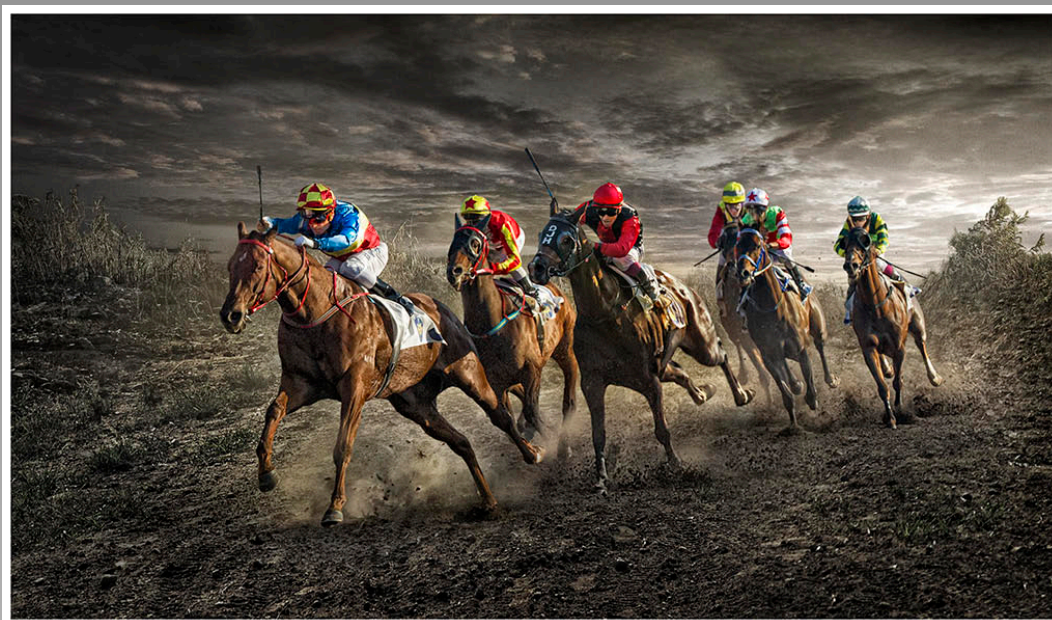
**“YELLOW BRACHTS”
© LARRY BELLER, APSA, EPSA (USA)**

[Previous](#)

[Next](#)

[Index](#)

**2014 Coachella International Exhibition of Photography
Medals Catalog**



**SECTION 1: PID COLOR GENERAL
JUDGE'S CHOICE**

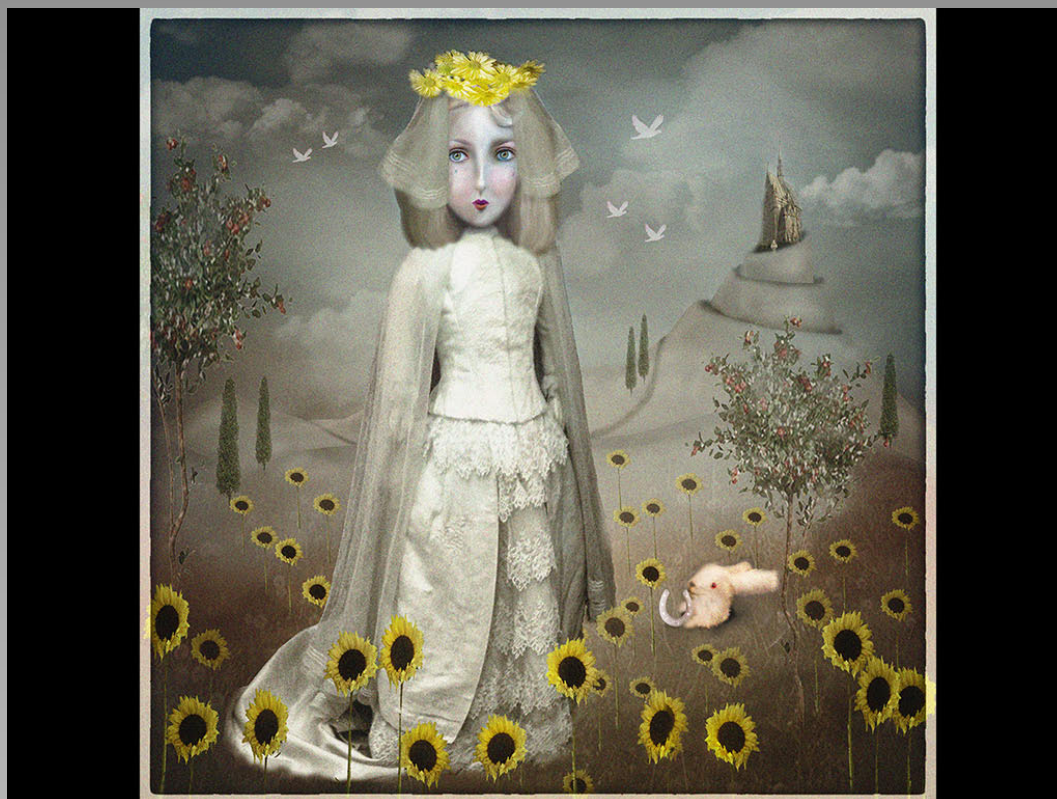
"DESOLATE RACING"
© CHAU KEI CHECKY LAM (HONG KONG)

[Previous](#)

[Next](#)

[Index](#)

**2014 Coachella International Exhibition of Photography
Medals Catalog**



**SECTION 1: PID COLOR GENERAL
JUDGE'S CHOICE**

"THE BRIDE"
© RIKKI ONEILL (UNITED KINGDOM)

[Previous](#)

[Next](#)

[Index](#)

**2014 Coachella International Exhibition of Photography
Medals Catalog**



**SECTION 1: PID COLOR GENERAL
COACHELLA BRONZE**

**“MOTIF NO.1”
© BILL BUCHANAN, FPSA (USA)**

[Previous](#)

[Next](#)

[Index](#)

**2014 Coachella International Exhibition of Photography
Medals Catalog**



**SECTION 1: PID COLOR GENERAL
COACHELLA BRONZE**

**“WETLANDS DAWN(8187)”
© JOHN LOWE (USA)**

[Previous](#)

[Next](#)

[Index](#)

**2014 Coachella International Exhibition of Photography
Medals Catalog**



**SECTION 1: PID COLOR GENERAL
COACHELLA BRONZE**

**“GOLDEN GATE BEHIND BOULDERS”
© MARY MILLER, EPSA (USA)**

[Previous](#)

[Next](#)

[Index](#)

**2014 Coachella International Exhibition of Photography
Medals Catalog**



**SECTION 1: PID COLOR GENERAL
COACHELLA SILVER**

**“KIWI WITH SPOON”
© MATTHEW MUSKOVAC (USA)**

[Previous](#)

[Next](#)

[Index](#)

**2014 Coachella International Exhibition of Photography
Medals Catalog**



**SECTION 1: PID COLOR GENERAL
COACHELLA SILVER**

**“AURORA APPEARING OVER YK”
© YUNG NIEM (CANADA)**

[Previous](#)

[Next](#)

[Index](#)

**2014 Coachella International Exhibition of Photography
Medals Catalog**



**SECTION 1: PID COLOR GENERAL
COACHELLA GOLD**

**“WRECK OF THE SUNBEAM 5”
© WESLEY LAW (IRELAND)**

[Previous](#)

[Next](#)

[Index](#)

**2014 Coachella International Exhibition of Photography
Medals Catalog**



**SECTION 1: PID COLOR GENERAL
PSA GOLD (BEST OF SHOW)**

**“MALACHITE ON LUPINE”
© IRENE KRAMER (USA)**

[Previous](#)

[Next](#)

[Index](#)



2014 Coachella International Exhibition of Photography Medals Catalog

Section 2: PID Color Theme (Flowers)

[Previous](#)[Next](#)[Index](#)

**2014 Coachella International Exhibition of Photography
Medals Catalog**



**SECTION 2: PID COLOR THEME (FLOWERS)
JUDGE'S CHOICE**

**"PAINTED PINK MAGNOLIA"
© BARBARA CURRI (USA)**

[Previous](#)

[Next](#)

[Index](#)

**2014 Coachella International Exhibition of Photography
Medals Catalog**



**SECTION 2: PID COLOR THEME (FLOWERS)
JUDGE'S CHOICE**

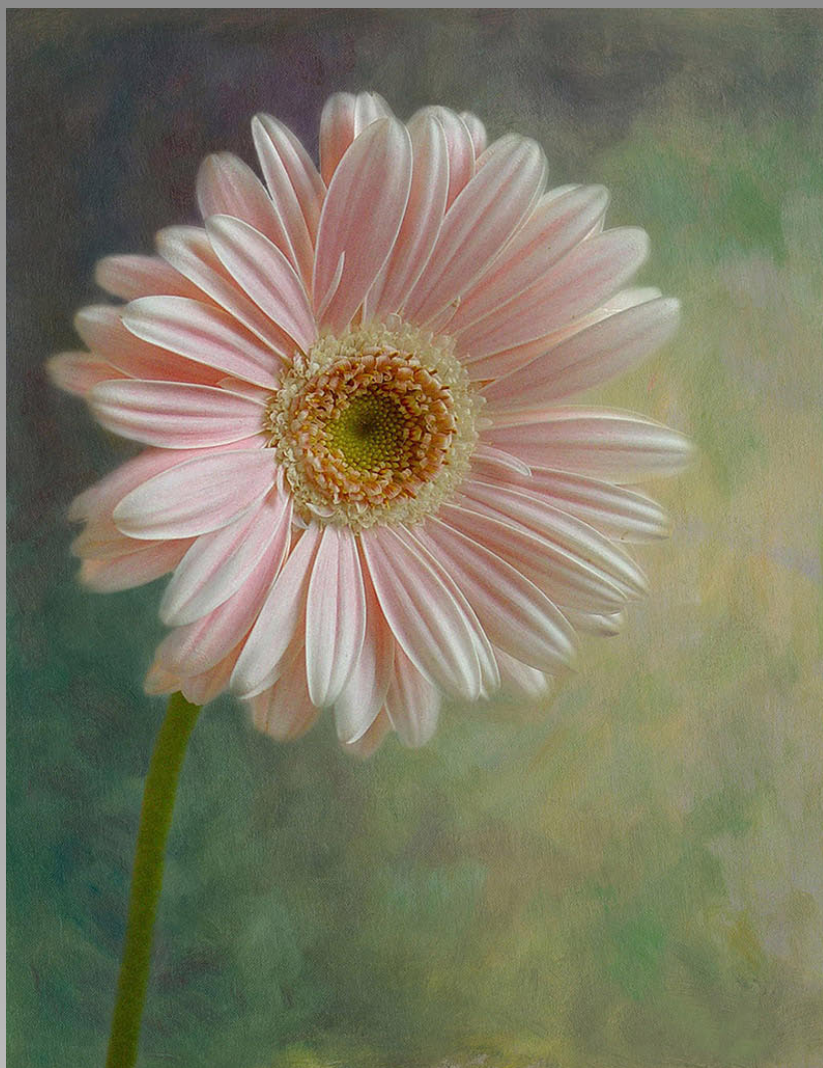
**"HIBISCUS 184"
© IRA NEMEROFF, PPSA (USA)**

[Previous](#)

[Next](#)

[Index](#)

**2014 Coachella International Exhibition of Photography
Medals Catalog**



**SECTION 2: PID COLOR THEME (FLOWERS)
JUDGE'S CHOICE**

**“GERBER SOFTNESS”
© EILEEN SKLON (USA)**

[Previous](#)

[Next](#)

[Index](#)

**2014 Coachella International Exhibition of Photography
Medals Catalog**



**SECTION 2: PID COLOR THEME (FLOWERS)
COACHELLA BRONZE**

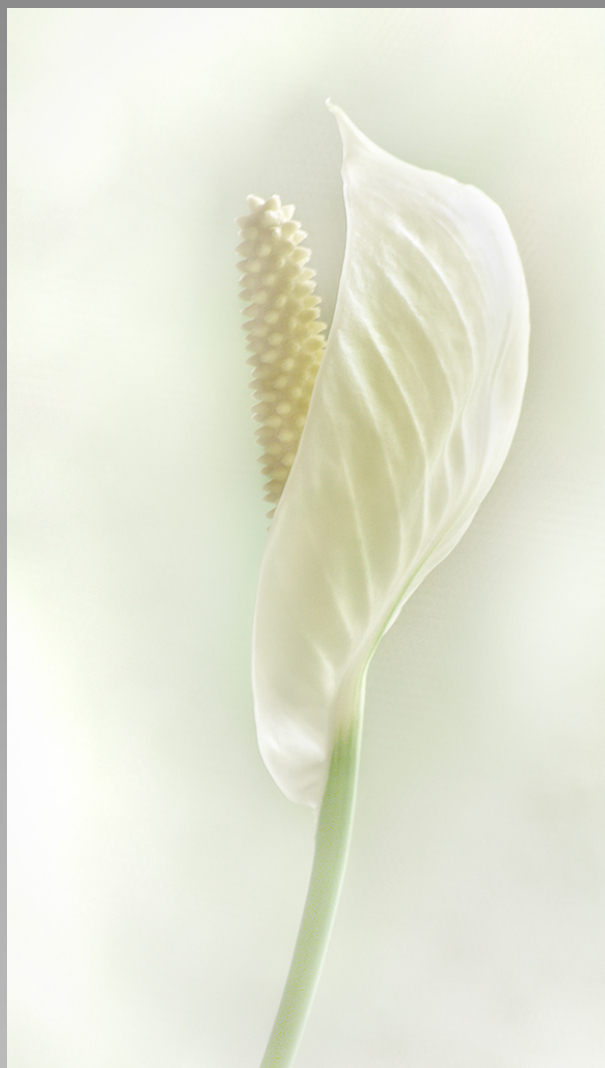
**“FLYING SAUCER CACTUS_023”
© GENE ALMENDINGER, PPSA (USA)**

[Previous](#)

[Next](#)

[Index](#)

**2014 Coachella International Exhibition of Photography
Medals Catalog**



**SECTION 2: PID COLOR THEME (FLOWERS)
COACHELLA BRONZE**

**“MADONNA LILY”
© ALEX HUNTER (AUSTRALIA)**

[Previous](#)

[Next](#)

[Index](#)

**2014 Coachella International Exhibition of Photography
Medals Catalog**



**SECTION 2: PID COLOR THEME (FLOWERS)
COACHELLA BRONZE**

**“LOOK AT ME”
© DENISE SALDANA (USA)**

[Previous](#)

[Next](#)

[Index](#)

**2014 Coachella International Exhibition of Photography
Medals Catalog**



**SECTION 2: PID COLOR THEME (FLOWERS)
COACHELLA SILVER**

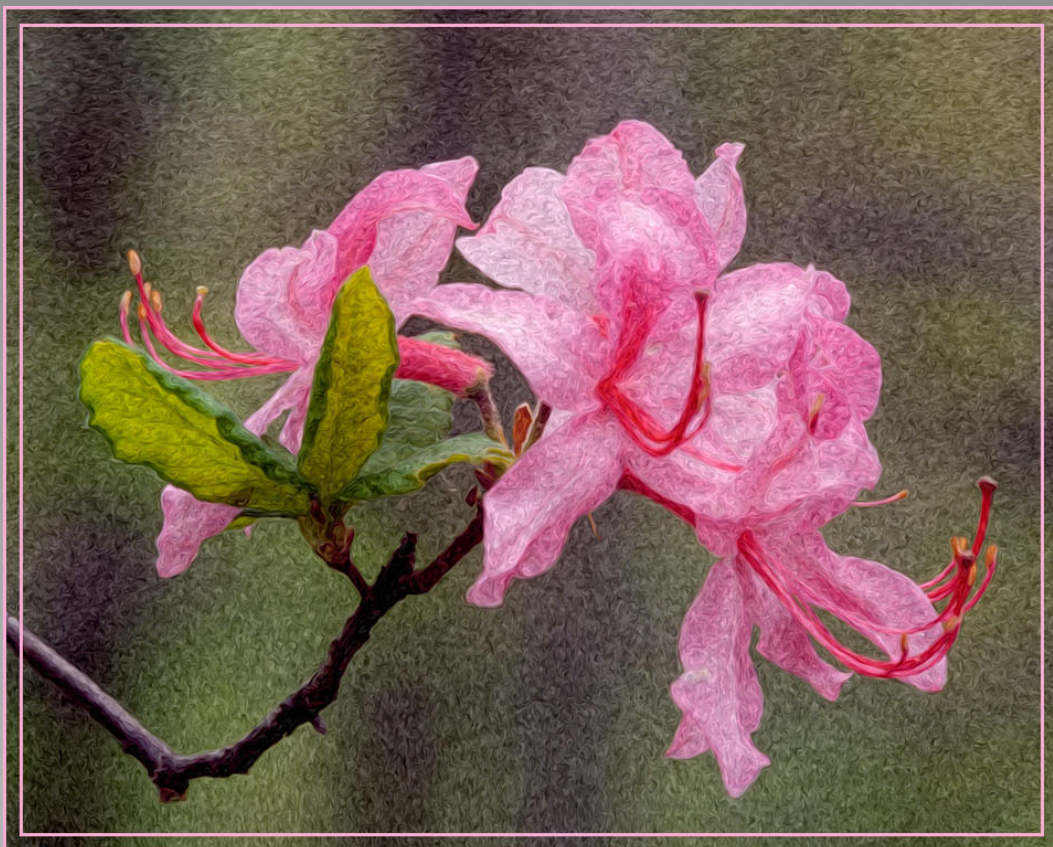
**“THREE COLUMBINE”
© BOB BENSON, APSA (USA)**

[Previous](#)

[Next](#)

[Index](#)

**2014 Coachella International Exhibition of Photography
Medals Catalog**



**SECTION 2: PID COLOR THEME (FLOWERS)
COACHELLA SILVER**

**“WILD AZALEAS”
© IRENE KRAMER (USA)**

[Previous](#)

[Next](#)

[Index](#)

**2014 Coachella International Exhibition of Photography
Medals Catalog**



**SECTION 2: PID COLOR THEME (FLOWERS)
COACHELLA GOLD**

**“PLUMARIA”
© KATHLEEN O'DONNELL (USA)**

[Previous](#)

[Next](#)

[Index](#)

**2014 Coachella International Exhibition of Photography
Medals Catalog**



**SECTION 2: PID COLOR THEME (FLOWERS)
PSA GOLD (BEST OF SHOW)**

**“AFTER THE RAIN”
© ALBERT PEER (AUSTRIA)**

[Previous](#)

[Next](#)

[Index](#)



2014 Coachella International Exhibition of Photography Medals Catalog

Section 1: PID Monochrome General

[Previous](#)[Next](#)[Index](#)

**2014 Coachella International Exhibition of Photography
Medals Catalog**



**SECTION 1: PID MONOCHROME GENERAL
JUDGE'S CHOICE**

**“WINTER ISOLATION”
© PETER CLARK, APSA, MPSA (UNITED KINGDOM)**

[Previous](#)

[Next](#)

[Index](#)

**2014 Coachella International Exhibition of Photography
Medals Catalog**



**SECTION 1: PID MONOCHROME GENERAL
JUDGE'S CHOICE**

**"MY FAVOURITE 9 BW"
© GUNTHER RIEHLE, GMPSA (GERMANY)**

[Previous](#)

[Next](#)

[Index](#)

**2014 Coachella International Exhibition of Photography
Medals Catalog**



**SECTION 1: PID MONOCHROME GENERAL
JUDGE'S CHOICE**

"SNOW DANCE"
© KAI LON TANG (MACAU)

[Previous](#)

[Next](#)

[Index](#)

**2014 Coachella International Exhibition of Photography
Medals Catalog**



**SECTION 1: PID MONOCHROME GENERAL
COACHELLA BRONZE**

**“BALD EAGLE 5566”
© NAN CARDER, PPSA (USA)**

[Previous](#)

[Next](#)

[Index](#)

**2014 Coachella International Exhibition of Photography
Medals Catalog**



**SECTION 1: PID MONOCHROME GENERAL
COACHELLA BRONZE**

**“LITTLE GIRL PRAYING”
© THANH LAM, PPSA (USA)**

[Previous](#)

[Next](#)

[Index](#)

**2014 Coachella International Exhibition of Photography
Medals Catalog**



**SECTION 1: PID MONOCHROME GENERAL
COACHELLA BRONZE**

**“ORANGUTAN”
© SANDY MCMILLAN (USA)**

[Previous](#)

[Next](#)

[Index](#)

**2014 Coachella International Exhibition of Photography
Medals Catalog**



**SECTION 1: PID MONOCHROME GENERAL
COACHELLA SILVER**

**“NUBBLE LIGHT MONOCHROME”
© BILL BUCHANAN, FPSA (USA)**

[Previous](#)

[Next](#)

[Index](#)

**2014 Coachella International Exhibition of Photography
Medals Catalog**



**SECTION 1: PID MONOCHROME GENERAL
COACHELLA SILVER**

**“TWO GENERATIONS”
© THANH LAM, PPSA (USA)**

[Previous](#)

[Next](#)

[Index](#)

**2014 Coachella International Exhibition of Photography
Medals Catalog**



**SECTION 1: PID MONOCHROME GENERAL
COACHELLA GOLD**

“FROZEN TREES”
© PETER CLARK, APSA, MPSA (UNITED KINGDOM)

[Previous](#)

[Next](#)

[Index](#)

**2014 Coachella International Exhibition of Photography
Medals Catalog**



**SECTION 1: PID MONOCHROME GENERAL
PSA GOLD (BEST OF SHOW)**

**“FLAMINGO”
© SANDY MCMILLAN (USA)**

[Previous](#)

[Next](#)

[Index](#)



2014 Coachella International Exhibition of Photography Medals Catalog

Section 2: PID Monochrome Theme (Architecture)

[Previous](#)[Next](#)[Index](#)

**2014 Coachella International Exhibition of Photography
Medals Catalog**



**SECTION 2: PID MONOCHROME THEME (ARCHITECTURE)
JUDGE'S CHOICE**

**"ENTRANCE TO NEW ORLEANS AQUARIUM"
© BOB BENSON, APSA (USA)**

[Previous](#)

[Next](#)

[Index](#)

**2014 Coachella International Exhibition of Photography
Medals Catalog**



**SECTION 2: PID MONOCHROME THEME (ARCHITECTURE)
JUDGE'S CHOICE**

**“WU ZHEN EVENING”
© NAN CARDER, PPSA (USA)**

[Previous](#)

[Next](#)

[Index](#)

**2014 Coachella International Exhibition of Photography
Medals Catalog**



**SECTION 2: PID MONOCHROME THEME (ARCHITECTURE)
JUDGE'S CHOICE**

"BAGAN"
© PHILLIP KWAN, MPSA (CANADA)

[Previous](#)

[Next](#)

[Index](#)

**2014 Coachella International Exhibition of Photography
Medals Catalog**



**SECTION 2: PID MONOCHROME THEME (ARCHITECTURE)
COACHELLA BRONZE**

**“ST ELMO GHOST TOWN”
© BOB BENSON, APSA (USA)**

[Previous](#)

[Next](#)

[Index](#)

**2014 Coachella International Exhibition of Photography
Medals Catalog**



**SECTION 2: PID MONOCHROME THEME (ARCHITECTURE)
COACHELLA BRONZE**

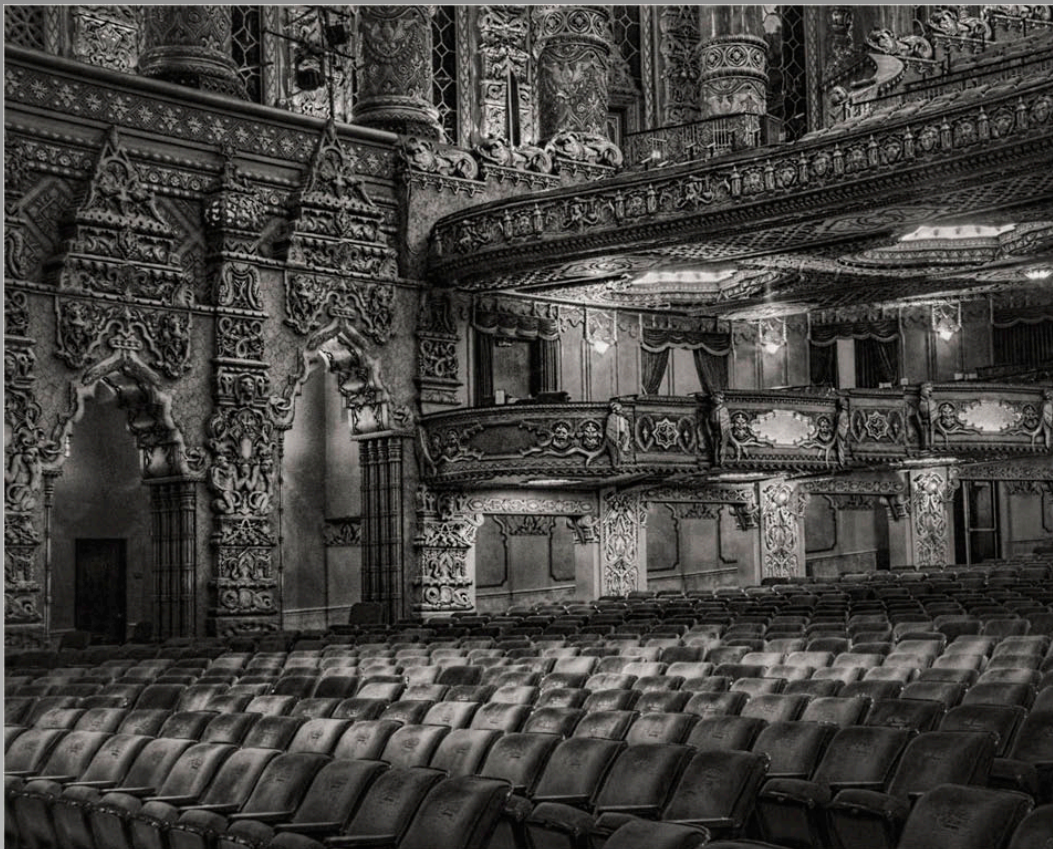
**“GREAT MOSQUE 2”
© XIAOXI LIAO (CHINA)**

[Previous](#)

[Next](#)

[Index](#)

**2014 Coachella International Exhibition of Photography
Medals Catalog**



**SECTION 2: PID MONOCHROME THEME (ARCHITECTURE)
COACHELLA BRONZE**

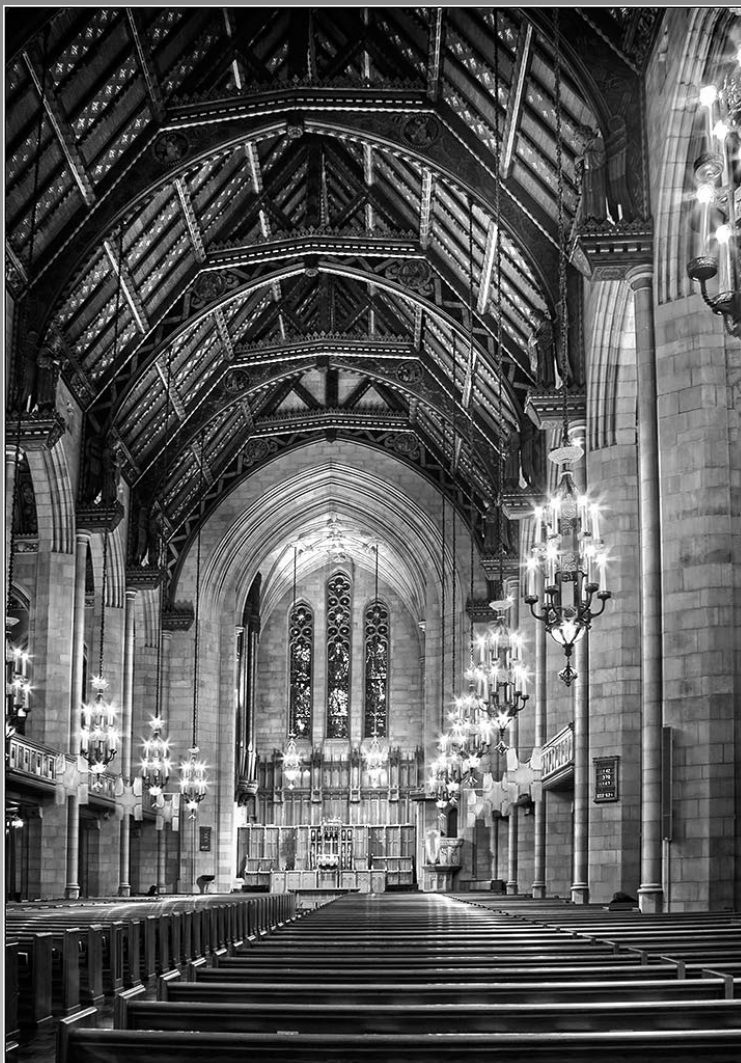
**“FABULOUS FOX THEATER”
© CINDY LYNCH (USA)**

[Previous](#)

[Next](#)

[Index](#)

**2014 Coachella International Exhibition of Photography
Medals Catalog**



**SECTION 2: PID MONOCHROME THEME (ARCHITECTURE)
COACHELLA SILVER**

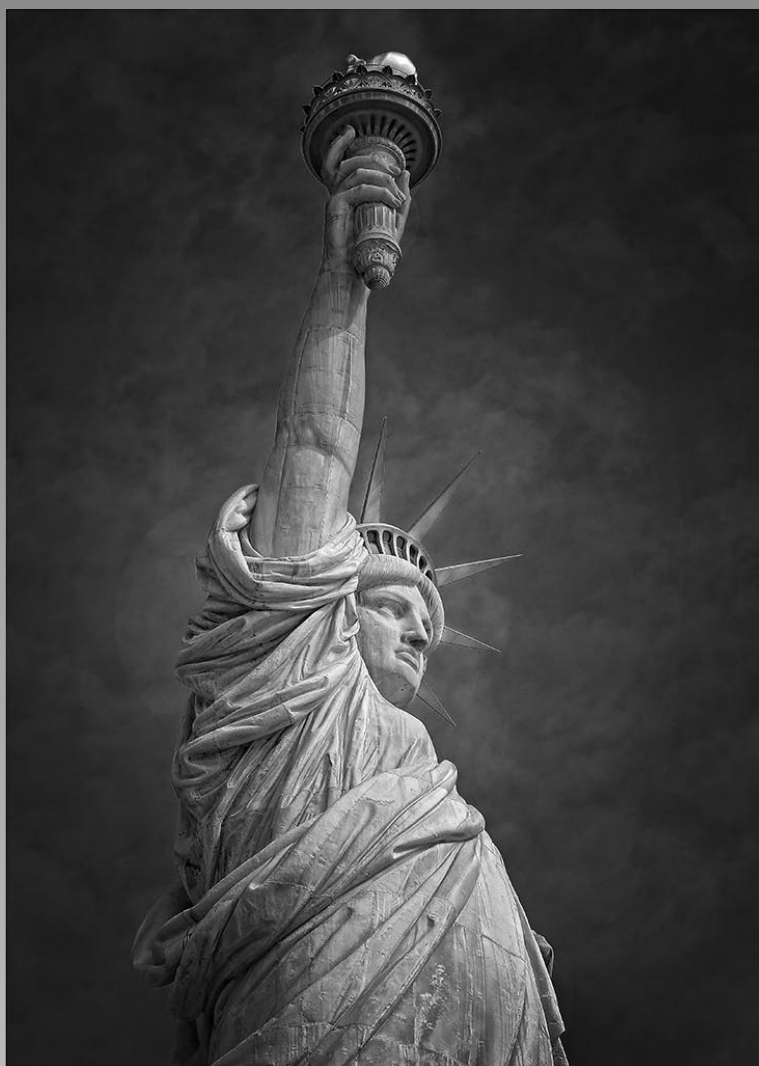
**“FOURTH PRESBYTERIAN CHURCH”
© BOB BENSON, APSA (USA)**

[Previous](#)

[Next](#)

[Index](#)

**2014 Coachella International Exhibition of Photography
Medals Catalog**



**SECTION 2: PID MONOCHROME THEME (ARCHITECTURE)
COACHELLA SILVER**

**“LIBERTY 1287”
© NAN CARDER, PPSA (USA)**

[Previous](#)

[Next](#)

[Index](#)

**2014 Coachella International Exhibition of Photography
Medals Catalog**



**SECTION 2: PID MONOCHROME THEME (ARCHITECTURE)
COACHELLA GOLD**

“MOSQUE ARCHES”

© MOHAMMED ARFAN ASIF, PPSA (UNITED ARAB EMIRATES)

[Previous](#)

[Next](#)

[Index](#)

**2014 Coachella International Exhibition of Photography
Medals Catalog**



**SECTION 2: PID MONOCHROME THEME (ARCHITECTURE)
PSA GOLD (BEST OF SHOW)**

**“OPERA HOUSE AND CITY LIGHTS”
© ROY KILLEN, EPSA (AUSTRALIA)**

[Previous](#)

[Next](#)

[Index](#)



2014 Coachella International Exhibition of Photography Medals Catalog

Section 1: Nature General

[Previous](#)[Next](#)[Index](#)

**2014 Coachella International Exhibition of Photography
Medals Catalog**



**SECTION 1: NATURE GENERAL
JUDGE'S CHOICE**

**"HAPPY MEAL 5"
© CHEE YEOW LIM (MALAYSIA)**

[Previous](#)

[Next](#)

[Index](#)

**2014 Coachella International Exhibition of Photography
Medals Catalog**



**SECTION 1: NATURE GENERAL
JUDGE'S CHOICE**

**"NEKO HARBOUR NO1"
© CRAIG PARKER (AUSTRALIA)**

[Previous](#)

[Next](#)

[Index](#)

**2014 Coachella International Exhibition of Photography
Medals Catalog**



**SECTION 1: NATURE GENERAL
JUDGE'S CHOICE**

**“PORCELAIN FUNGI TRIO”
© JIM TARBOX (UNITED KINGDOM)**

[Previous](#)

[Next](#)

[Index](#)

**2014 Coachella International Exhibition of Photography
Medals Catalog**



**SECTION 1: NATURE GENERAL
COACHELLA BRONZE**

**“CAPTURE DE SPLENDENS”
© MARC ANAGNOSTIDIS, APSA, GMP SA (FRANCE)**

[Previous](#)

[Next](#)

[Index](#)

**2014 Coachella International Exhibition of Photography
Medals Catalog**



**SECTION 1: NATURE GENERAL
COACHELLA BRONZE**

**“WHISTLING KITE WITH GULL 5”
© JENNI HORSNELL, MPSA (AUSTRALIA)**

[Previous](#)

[Next](#)

[Index](#)

**2014 Coachella International Exhibition of Photography
Medals Catalog**



**SECTION 1: NATURE GENERAL
COACHELLA BRONZE**

**“PREY”
© CHUANHAO HSU (TAIWAN)**

[Previous](#)

[Next](#)

[Index](#)

**2014 Coachella International Exhibition of Photography
Medals Catalog**



**SECTION 1: NATURE GENERAL
COACHELLA SILVER**

**“FAMILY IDYLL 0903”
© HEIKO ROEMISCH (GERMANY)**

[Previous](#)

[Next](#)

[Index](#)

**2014 Coachella International Exhibition of Photography
Medals Catalog**



**SECTION 1: NATURE GENERAL
COACHELLA SILVER**

**“GULL WITH FROG”
© RENE VAN ECHELPOEL (BELGIUM)**

[Previous](#)

[Next](#)

[Index](#)

**2014 Coachella International Exhibition of Photography
Medals Catalog**



**SECTION 1: NATURE GENERAL
COACHELLA GOLD**

**“UNDERWATER CATCH”
© THANH LAM, PPSA (USA)**

[Previous](#)

[Next](#)

[Index](#)

**2014 Coachella International Exhibition of Photography
Medals Catalog**



**SECTION 1: NATURE GENERAL
PSA GOLD (BEST OF SHOW)**

**“KATMAI BROWN BEAR 3812”
© NAN CARDER, PPSA (USA)**

[Previous](#)

[Next](#)

[Index](#)



2014 Coachella International Exhibition of Photography Medals Catalog

Section 2: Nature Wildlife

[Previous](#)[Next](#)[Index](#)

**2014 Coachella International Exhibition of Photography
Medals Catalog**



**SECTION 2: NATURE WILDLIFE
JUDGE'S CHOICE**

**"JELLYFISH"
© ALBERT PEER (AUSTRIA)**

[Previous](#)

[Next](#)

[Index](#)

**2014 Coachella International Exhibition of Photography
Medals Catalog**



**SECTION 2: NATURE WILDLIFE
JUDGE'S CHOICE**

**"NOURISHMENT FOR MOM-WESTERN GREBES"
© ERIK ROSENGREN, APSA, PPSA (USA)**

[Previous](#)

[Next](#)

[Index](#)

**2014 Coachella International Exhibition of Photography
Medals Catalog**



**SECTION 2: NATURE WILDLIFE
JUDGE'S CHOICE**

**“SKIMMER MATING”
© MINH TAN THAI (USA)**

[Previous](#)

[Next](#)

[Index](#)

**2014 Coachella International Exhibition of Photography
Medals Catalog**



**SECTION 2: NATURE WILDLIFE
COACHELLA BRONZE**

**“BIG BULLY SMALL”
© CHI-LAI HUANG (TAIWAN)**

[Previous](#)

[Next](#)

[Index](#)

**2014 Coachella International Exhibition of Photography
Medals Catalog**



**SECTION 2: NATURE WILDLIFE
COACHELLA BRONZE**

**“I WANT IT”
© SANDY MCMILLAN (USA)**

[Previous](#)

[Next](#)

[Index](#)

**2014 Coachella International Exhibition of Photography
Medals Catalog**



**SECTION 2: NATURE WILDLIFE
COACHELLA BRONZE**

**“HUNTING CHEETAHS”
© ENG SIONG YEO (SINGAPORE)**

[Previous](#)

[Next](#)

[Index](#)

**2014 Coachella International Exhibition of Photography
Medals Catalog**



**SECTION 2: NATURE WILDLIFE
COACHELLA SILVER**

**“GATOR WITH SNOWY EGRET 0828”
© VIKI GAUL (CANADA)**

[Previous](#)

[Next](#)

[Index](#)

**2014 Coachella International Exhibition of Photography
Medals Catalog**



**SECTION 2: NATURE WILDLIFE
COACHELLA SILVER**

**“KOKMEEUW MET KIKKER”
© DRE VAN MENSEL, GMP SA (BELGIUM)**

[Previous](#)

[Next](#)

[Index](#)

**2014 Coachella International Exhibition of Photography
Medals Catalog**



**SECTION 2: NATURE WILDLIFE
COACHELLA GOLD**

**“LOON FEEDING CHICK”
© TIN SANG CHAN (CANADA)**

[Previous](#)

[Next](#)

[Index](#)

**2014 Coachella International Exhibition of Photography
Medals Catalog**



**SECTION 2: NATURE WILDLIFE
PSA GOLD (BEST OF SHOW)**

**“THE BIRTH”
© ENG SIONG YEO (SINGAPORE)**

[Previous](#)

[Next](#)

[Index](#)

